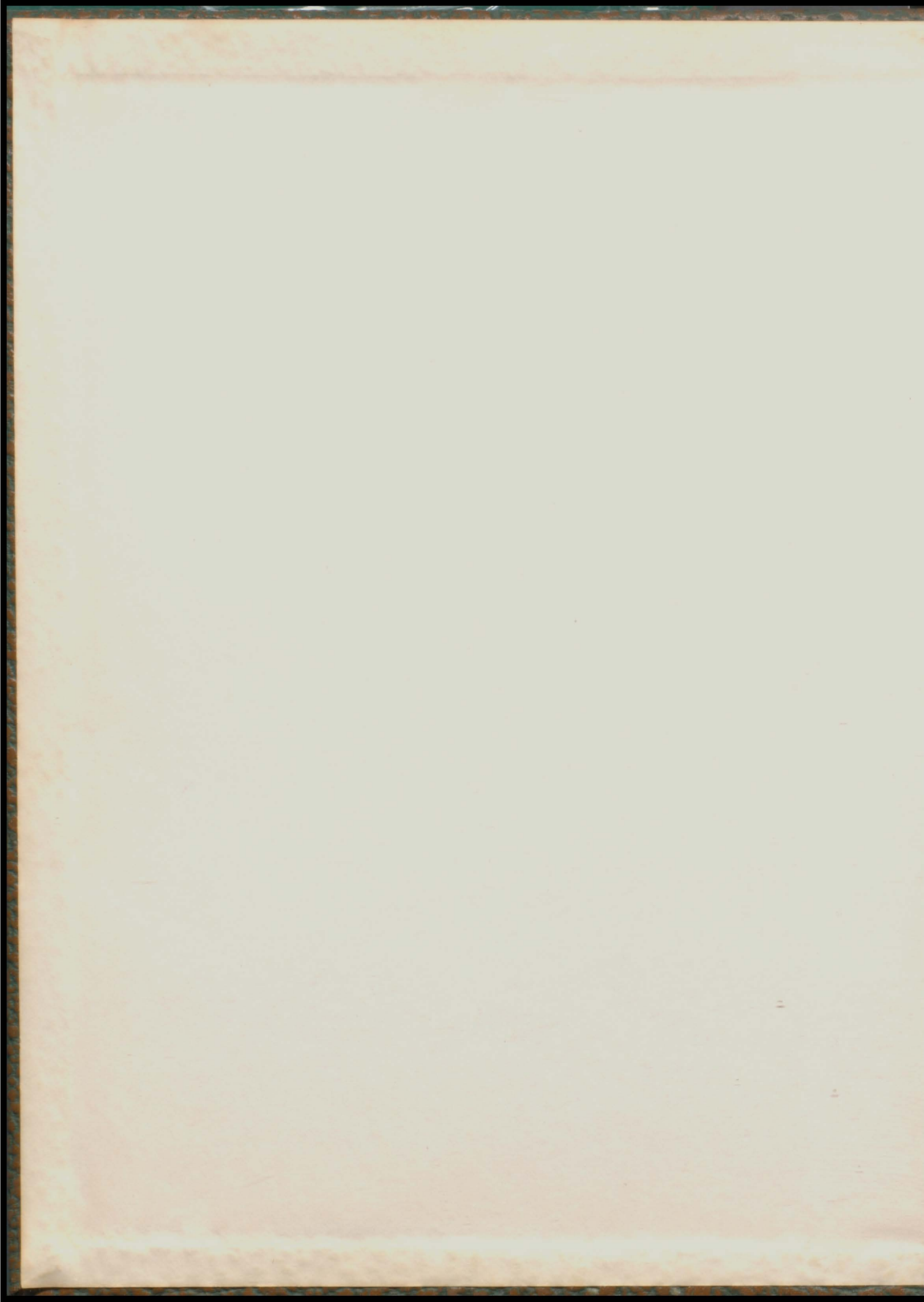


The Eau Pleine
1950

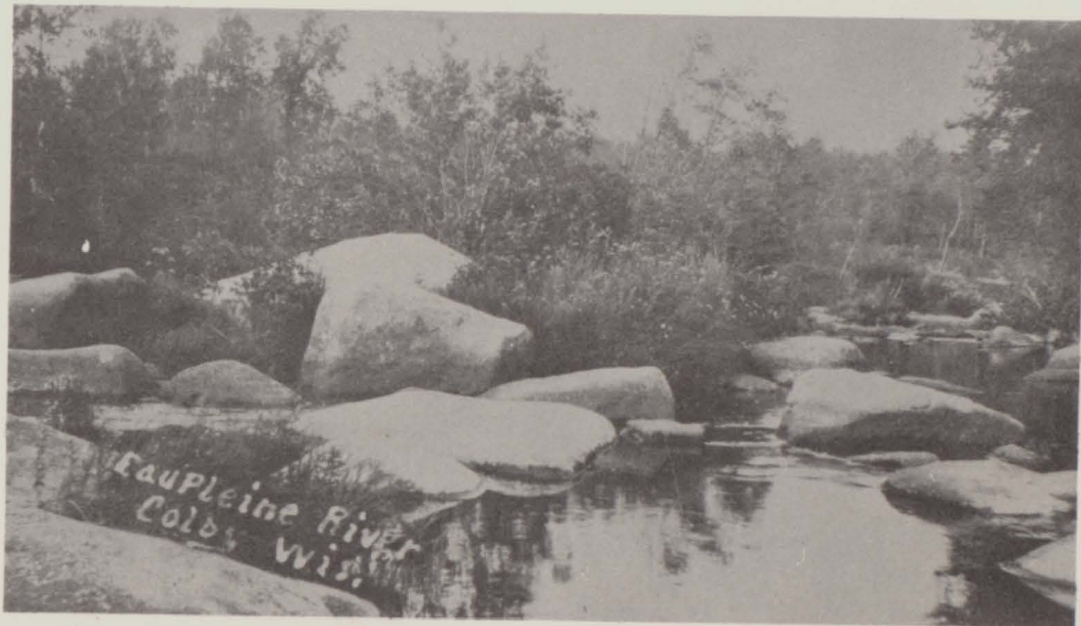






THE EAU PLEINE

VOLUME 13, 1950



EDITED BY THE CLASS OF '50

COLBY HIGH SCHOOL

COLBY, WISCONSIN



ANNUAL STAFF

Editor-in-Chief.....Duane Riedel

Business Manager.....Dave Loos

Assistant Business Managers.....Bob Bane
Jerry Allmann

Typists.....Beverly Redlin
Marilyn Hackel
Delores Weyneth
Marilyn Hasenohrl

Artist.....Lucille Gottschalk

Advisor.....Mr. Jackson

Snapshots.....Floyd Stecker
Kenneth Laube
Max Farning
Lawrence Olson

Special Writers.....Ella Haas
Darlene Hanson
Beverly Hauser
Delmer Radeztsky
Roberta Brehm
Betty Beck

Junior Editors.....Sharon Schultz
Rose Ertl

Junior Business Manager.....Harold Baumgartner

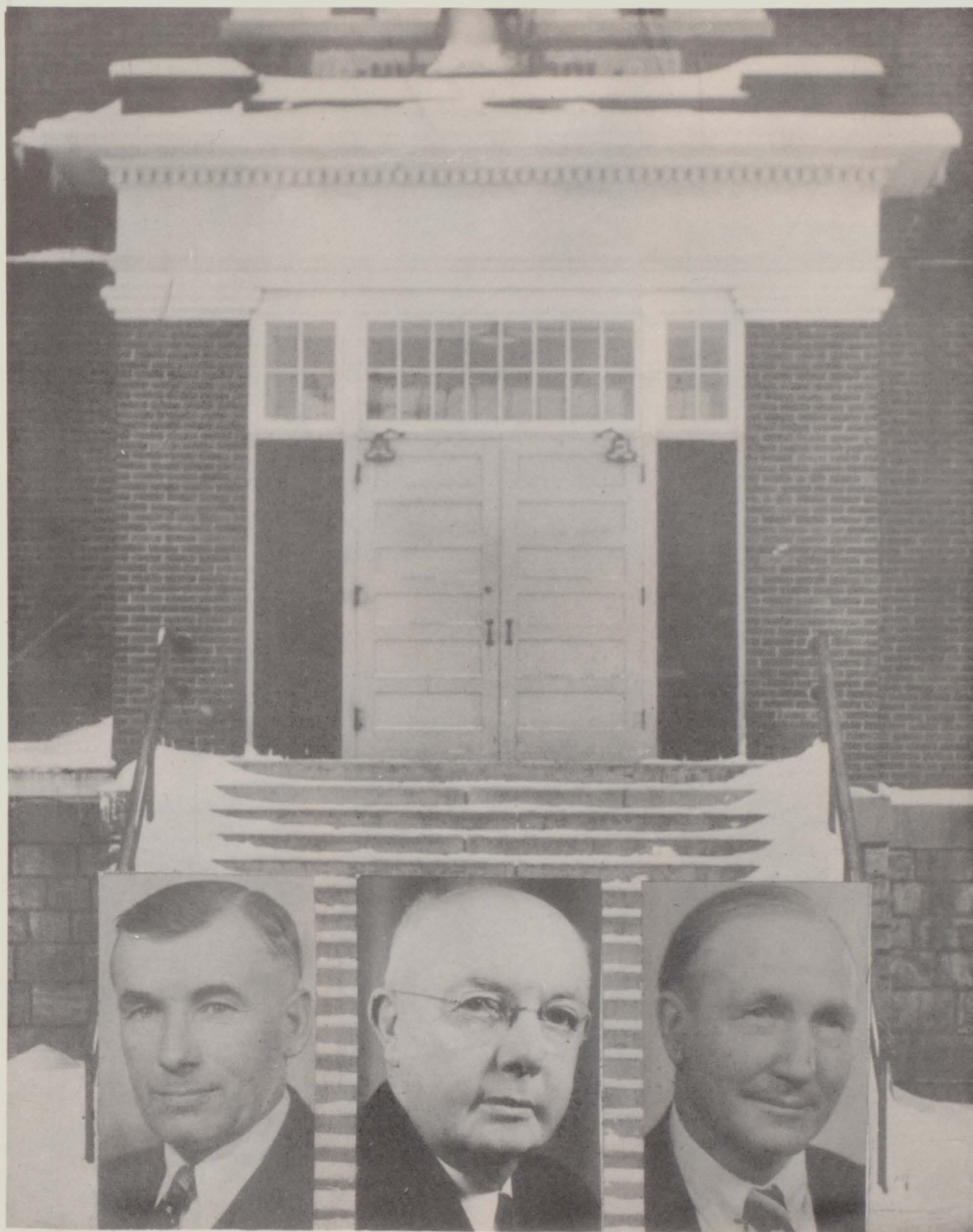
FOREWORD

Admidst the low surrounding hills of Marathon and Clark counties, lies our city, Colby.

Its history dates back many years when the first settlers migrated here and began the lumbering business, but since most of our good trees have been cut down, lumbering is no longer of great importance and has been replaced by dairying. Our youth of Colby has grown up here where there are familiar sights of hugh dairy barns and cattle grazing in the meadows.

We have a good school system which is able to produce young men and women who are ideally suited to meet the problems of our world, today.

To show the progress that we have achieved, we the "Class of '50" present this volume of the Eau Pleine.



E. W. SCHULZ
Treasurer

DR. H. H. CHRISTOFFERSON
President

O. H. HEINTZ
Clerk

BOARD OF EDUCATION

FACULTY



HARRY BENDER

Math
Music
Principal



MARVIN ERDMANN

Agriculture



JOHN HANSON

Music
Math
Economics



BLANCHE HEMPHILL

History
Biology



LUCILLE McKERNON

Commercial



ARNOLD McKERNON

Coach
History
Geography



PHYLLIS MILLER

Home Economics



JOYCE RANNO

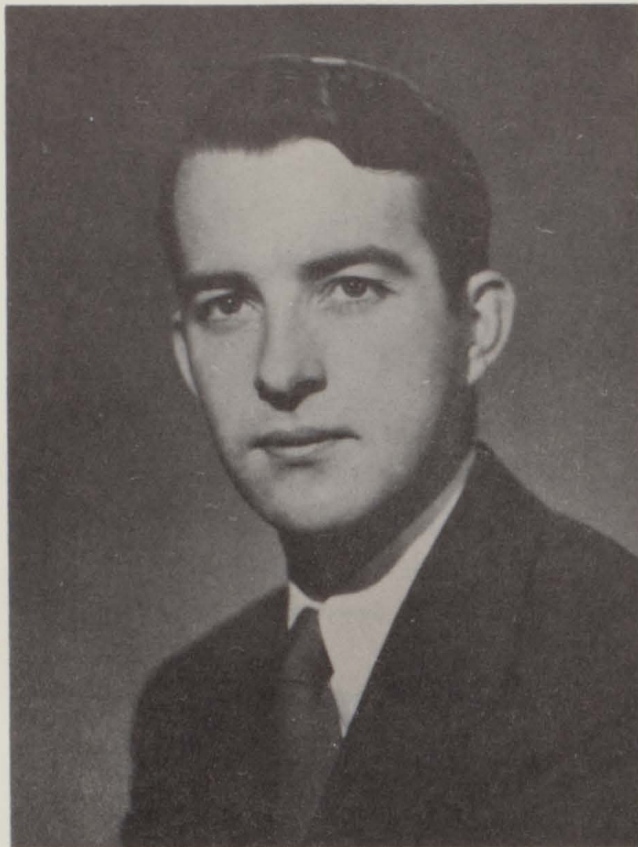
English
Speech
Library



BEATRICE SKOGSTAD

English
Citizenship

DEDICATION



To Mr. Jackson, our class advisor for the past two years, we, the Class of 1950, dedicate this volume of the Eau Pleine in appreciation for the patience, wise-guidance, and friendly co-operation shown us.





BETTY BECK

"Becky"

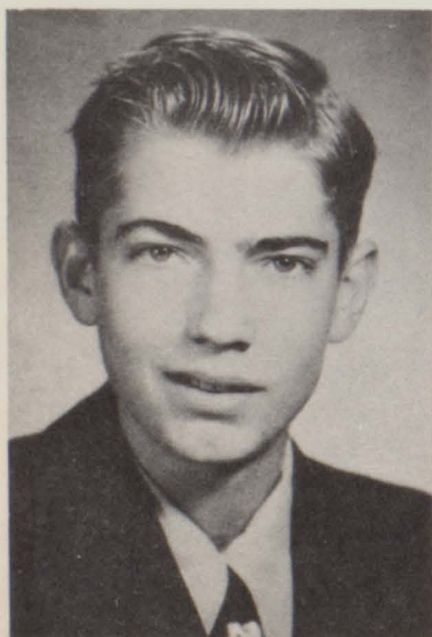
Men are like socks, they have to be changed often.

Dorchester 1½; Pep Club 3, 4; Pep Club Officer 3; Prom Queen 2; Senior Ball Queen 4; Carnival Candidate 3; Class Officer 2; Chorus 1, 2, 3, 4; Band 1½; Twirler 3; Dramatic Club 1; Forensics 1, 2; Sports 1, 2.

VERN BUCHANAN

Quiet and unassuming.

F. F. A. 1, 2, 3, 4.



GERALD ALLMANN

"Jud"

Great men are dying, I don't feel so well myself.

Madrigals 2, 3, 4; Boys Quartet 2, 3, 4; One Act Play 3; Chorus 1, 2, 3, 4; Basketball 2; Annual Staff 4; Class Officer 3.



ELLA HAAS

'Tis education forms the common mind, for as the twig is bent the tree's inclined.

F. H. A. 1, 2, 3, 4, Officer 3, 4; Glee Club 1; Chorus 3; Library Club 3, 4; Forensics 2, 3; One Act Play 4; Annual Staff 4; Inter-Nos 3, 4.



ROBERTA BREHM

"Bertsie"

She has no heart, he has it.

Band 1, 2, 3; Glee Club 1, 4; Chorus 2, 3; Class Officer 2; Madrigals 3; F. H. A. 2, 3, 4, Officer 4; Sports 1; Pep Club 3, 4; Junior Prom Queen 3.

ROBERT BANE

"Slab"

A fine lad, wise from the top of his head up.

Band 1, 2, 3, 4; Class Officer 1; Magazine Sales Mgr. 3, 4; Chorus 1; Annual Staff 4.





DAVID LOOS

"Dave"

When a wise man wants something done
he does it himself.

Softball 1, 2, 3; Basketball 1, 2, 3, 4;
Baseball 1, 2, 3, 4; Volleyball 2, 3, 4;
Track 1, 2, 3, 4; "C" Club 3, 4, Officer 4;
Forensics 2, 3, 4; Inter-Nos 3, 4; Annual
Staff 3, 4; One Act Play 2, 3, 4; Senior
Class President; Senior Ball King; Band 1,
2, 3, 4; Drama Club 3, 4.

JOYCE FORBISH

"Joy"

Why worry, might as well smile, the world
won't end yet for a while.

Chorus 2, 3; Glee Club 1, 4; Pep Club 3, 4;
F. H. A. 1, 2, 3, 4, Officer 4; Class
Officer 4; Sports 2, 3, 4,



LAWRENCE OLSON

"Boggie"

All he needs is a hook, he's got a line.

Basketball 3, 4; Baseball 3, 4; Softball 4;
Volleyball 4; Track 4; F. F. A. 1, 2, 4,
Officer 2, 4; Carnival Candidate 1;
Madrigals 3, 4; Chorus 2, 4; "C" Club 4;
Class Officer 1.

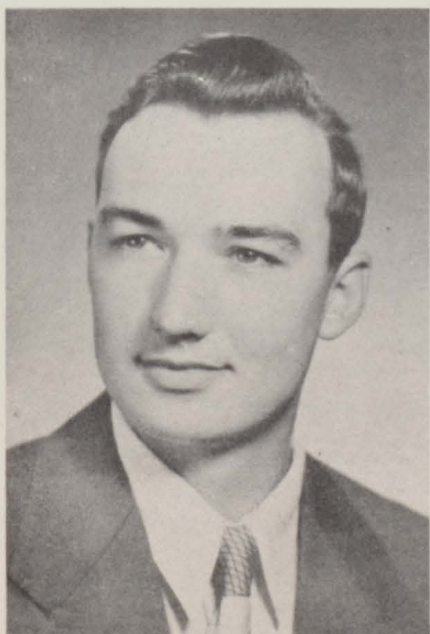


HENRY CARR

"Hank"

School is fine . . . from the outside.

F. F. A. 1, 2, 3, 4.



SHIRLEY ELSTROM

"Ellie"

Never do today what you can put off 'til
tomorrow.

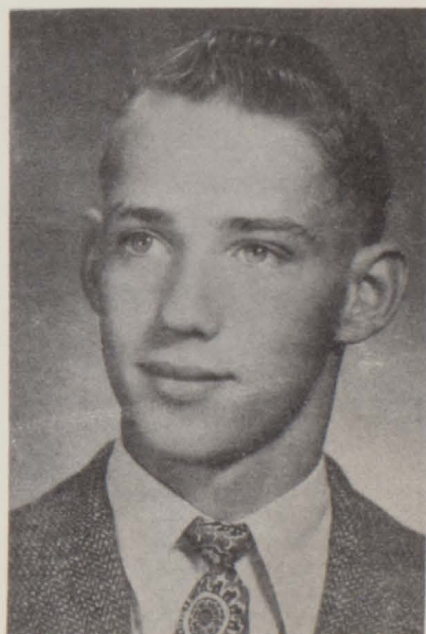
Chorus 2; Inter-Nos 4; Pep Club 4; F. H. A.
2, 3, 4; Glee Club 4.

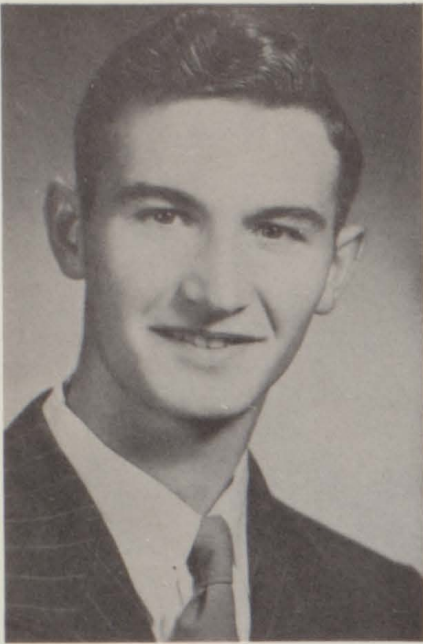
NORMAN DAUFENBACK

"Norm"

Sleep and the world sleeps with you.

F. F. A. 1, 2, 3, 4.





DELMER RADEZTSKY

"Skee"

He doesn't break rules, he just bends them.

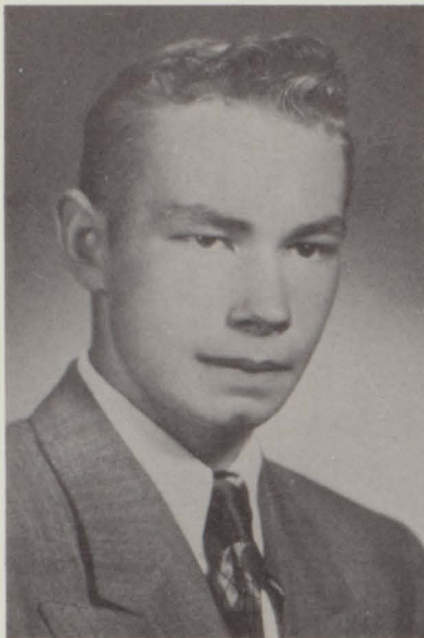
Basketball 1, 2, 3, 4; Baseball 1, 2, 3, 4; Softball 1, 2, 3, 4; Volleyball 1, 2, 3, 4; Track 2, 3, 4; Class President 1; "C" Club 3, 4, President 4; Inter-Nos 4; Annual Staff 4; Madrigals 3, 4; Chorus 4; F. F. A. 1, 2, Officer 2; Boys Quaret 4.



MAX FARNING

Whoever invented work should have finished it.

Band 1; Annual Staff 4; F. F. A. 1, 2; Camera Club 3.



PETE GIERL

"Pedro"

Why work when you can sleep. (You lazy guy you.)

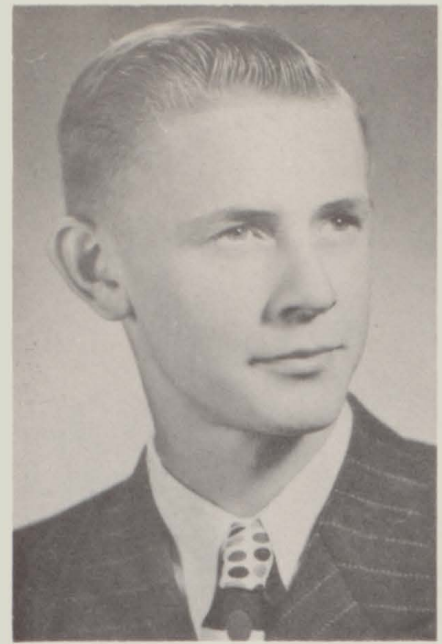
Basketball 1, 2, 3, 4; Volleyball 3, 4; Track 3, 4; "C" Club 3, 4.



THOMAS FORBISH

"Tom"

A careful student . . . careful not to overdo. F. F. A. 1, 3, 4; F. F. A. Basketball 3, 4; F. F. A. Officer 4; Forensics 2, 3, 4; One Act Play 4.

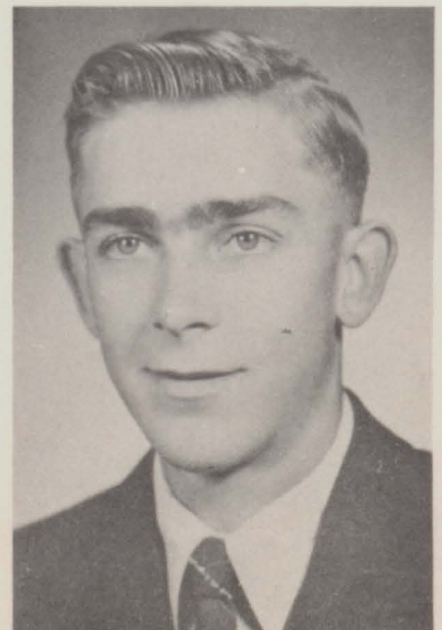


FLOYD STECKER

"Stake"

Work fascinates me, I can sit and look at it for hours.

Basketball 1, 2, 3, 4; Baseball 1, 2, 3, 4; Softball 1, 2, 3, 4; Volleyball 1, 2, 3, 4; Track 2, 4; Class Officer 2; "C" Club 3, 4, Officer 3, 4; F. F. A. 1, 2, 4, President 4; Carnival Candidate 2; Madrigals 2, 3, 4; Chorus 2, 3, 4; Male Quartet 3, 4; Junior Prom King 3; Annual Staff 4.



RUSSELL KELLNER

"Russ"

Study is a pass time, so why overdo.

F. F. A. 1, 2, 3, 4.



DOROTHY GOSSE

"Kitty"

Live fast, die young, have a good looking corpse.

Band 1, 2; Chorus 3; Glee Club 4; Sports 3; Class Officer 3.



ADELINE HANSEN

"Blondie"

Why Clarence prefers a blonde isn't hard to explain.

F. H. A. 1, 2, 3, 4; Sports 4.



LUCILLE GOTTSCHALK

"Dolly"

Her mind is on her work, but her heart is elsewhere.

Class Officer 4; Chorus 3; Glee Club 4; Pep Club 3, 4; Sports 2, 3, 4; Annual Staff 4.



MARILYN HACKEL

Why does it get so late so early?

Band 1, 2, 3; F. H. A. 1, 2, 3, 4; Sports 1, 2, 3, 4; Inter-Nos 4; Annual Staff 4; Glee Club 1.



JOANNE GIERL

The world was made to be enjoyed and she makes the best of it.

F. H. A. 1, 2, 3, 4; Pep Club 3, 4; Glee Club 1; Sports 1, 2, 3, 4; Madrigals 2.



AUDREY HEDERER

"Squirt"

Quality and quantity.

Pep Club 3, 4; F. H. A. 1, 2, 3, 4.



DARLENE HANSON

"Dar"

Eat, drink and be merry, for tomorrow you may die!

Chorus 2, 3; Madrigals 3; Sports 1; F. H. A. 2, 3, 4; Glee Club 4; Inter-Nos 3, 4; Pep Club 3, 4; Class Officer 1; F. H. A. Officer 3, 4.



MARILYN HASENOHRL

"Hezzy"

She is a vivacious lass, she's the giggles of the class.

Band 1, 2, 3; F. H. A. 1, 2; Gym 1, 2, 3, 4; Inter-Nos 4; Annual Staff 4.



BEVERLY HAUSER

"Bev"

Taken.

Band 1, 2, 3; Glee Club 1, 4; Chorus 2, 3; Class Officer 2; Madrigals 3; F. H. A. 2, 3, 4; Officer 3; Sports 1; Pep Club 3, 4.



GARNETTA KOWALK

"Toots"

Short but sweet.

Pep Club 3, 4; F. H. A. 1, 2, 3, 4; Glee Club 1; Gym 3.



LLOYD JASTROW

"Jasper"

He is a hunter; women are his game.

Band 1, 2, 3; Madrigals 2, 3, 4; Chorus 1, 2, 3, 4; Boy's Quartet 4; One Act Play 3, 4; Track 1; Drama Club 3.

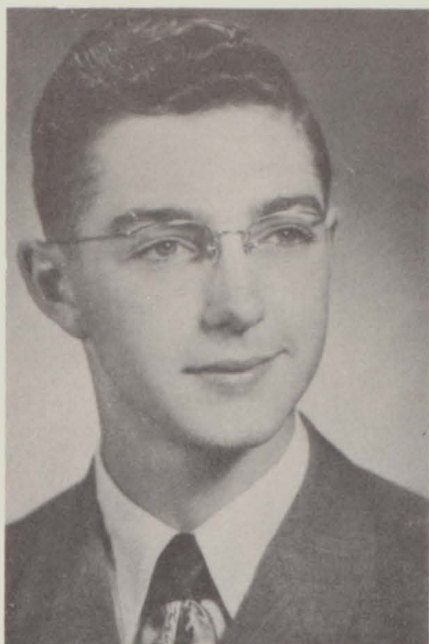


ROBERT KLAAR

"Bob"

The tragic stage was planned, then the clown walked in.

Band 1, 2, 3, 4.



KENNETH LAUBE

"Ken"

Don't look at me girls it makes me nervous.

F. F. A. 1, 2; Forensics 2, Carnival Candidate 3; Annual Staff 4, Inter-Nos 4; Camera Club 3.

CAROL MILLER

"Rusty"

Good things come in small packages.

Carnival Candidate 2; F. H. A. 1, 2, 3, 4, Officer 3; Twirler 3; Glee Club 1; Pep Club 3, 4;



LA VONNE KLESSIG

Sometimes I'm quiet,

Sometimes I'm shy,

But the rest of the time, Oh my!

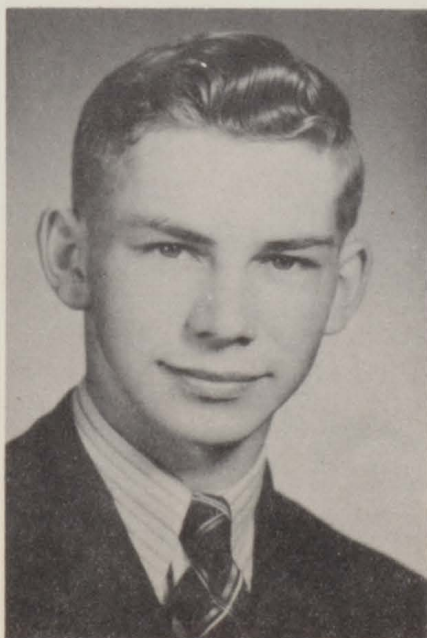
Band 1, 2, 3, 4; Glee Club 1, Pep Band 4; Pep Club 4; Basketball 1; F. H. A. 1, 2, 3, 4.

EDWIN LADWIG

"Ed"

Don't over sleep and your dreams will come true.

Band 1; F. F. A. 1, 2.



DALE RINDFLEISCH

This learning, what a thing it is.

Softball 2, 3, 4; Baseball, 2, 3, 4; Basketball 2, 3, 4; Volleyball 3, 4; F. F. A. 1, 2; "C" Club 3, 4.

BEVERLY REDLIN

"Bev"

My idea of an agreeable person is a person who agrees with men.

Omro 1; Chorus 1, 2, 3; Band 1, 3, 4; Pep Club 3, 4, Officer 4; Inter-Nos 4; Glee Club 4; Annual Staff 4; F. H. A. 1, 2, 3, 4; Forensics 2; Pep Band 4.





DUANE RIEDEL

"Reverend"

No smart man wastes his time with girls.
Class President 2; Chorus 1; Annual Staff 3,
4; Camera Club 3; One Act Play 4; Inter-
Nos 4.

GRACE SCHORER

I'm satisfied with myself so why worry,
there's more excitement in this world.

F. H. A. 1, 2, 3, 4; Chorus 3; Glee Club 4;
Pep Club 3, 4; F. H. A. Officer 4; Pep Club
Officer 4; Inter-Nos 4.



DALE STEINKE

"County"

Though vanquished, he argues still.
Baseball 2, 3, 4; Basketball 2, 3; Softball
2, 3, 4; "C" Club 4.

ROBERT REDLIN

"Bob"

I work hard doing nothing.
Omro 1; Chorus 1, 2, 3, 4; F. F. A. 1, 3, 4.



RAYMOND SMUDDE

"Ray"

I never let my studies interfere with my
education.

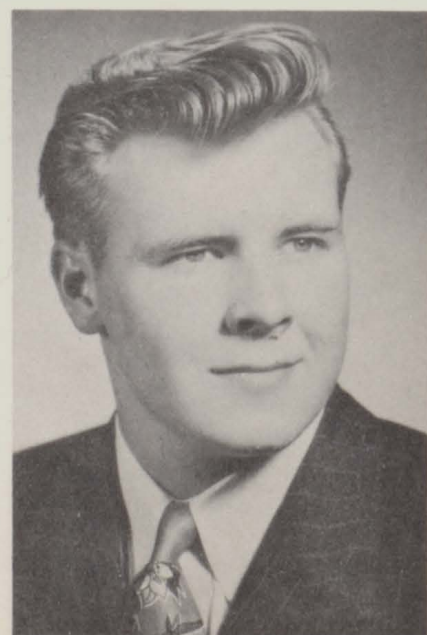
Class President 3; F.F.A. 1,2,3,4, Officer 4.

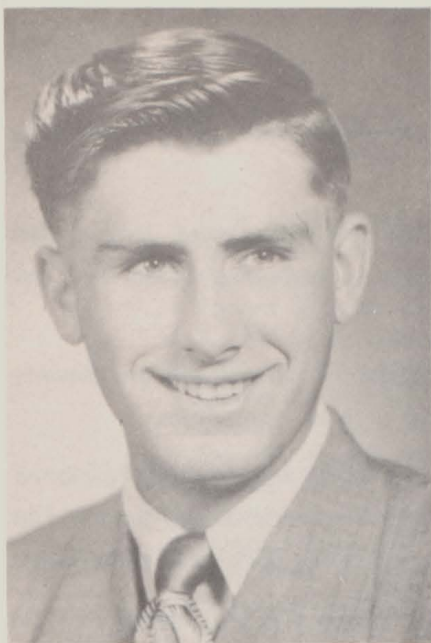
RONALD SCHMIDT

"Ronnie"

I've never seen a perfect girl, but it's sure
fun looking.

F. F. A. 1, 2, 3; F. F. A. Basketball 2.





CLARENCE TYZNIK

"Clarie"

The combined qualities of a man and an athlete.

Chicago 1, 3; Gilman 2; F. F. A. 2, 4; Basketball 2, 3, 4; Baseball 1, 2, 3, 4; Football 3; Softball 4; Carnival Candidate 4.

BETTY WUSSOW

"Blondie"

If there's anything I like better than fun, it's more fun.

Edgar High School 1, 2; Chorus 3; Glee Club 1, 2, 4; Pep Club 3; F. H. A. 3, 4; Carnival Candidate 4.



PATRICK YOUMANS

"Pat"

A man of appetite and of muscle.

Basketball Mgr. 3, 4; Band 1, 2, 3, 4; Pep Band 1, 2, 3, 4; Chorus 1, 2, 4; Softball 2, 3, 4; Baseball 2, 3, 4; Track 3, 4; "C" Club 3, 4; Class Officer 4; Volleyball 3, 4.

WILBERT UHLIG

Rest is more agreeable than motion.

F. F. A. 1, 2, 3, 4.



DELORES WEYNETH

"Rocky"

She's musical and all the rest, yes, such a girl is truly blest.

Wausau High 1½; Madrigals 2, 3, 4; Chorus 2, 3; Glee Club 4; Girls Trio 4; Girls Duet 4; Pep Club 4; Sports 1, 4; Annual Staff 4.

MARY ANN WEIX

My life is like the moon, just one man in it.



SENIOR CLASS HISTORY

Great changes can be seen throughout the interior of the Colby High School which were brought about by the Class of '50.

As fifty-eight meek Freshmen we opened the doors of Colby High to a life of new experiences. We elected Delmer Radeztsky, Lawrence Olson, Robert Bane and Darlene Hanson as our class officers. Mr. Seidel was our advisor. Our carnival candidates were Donna Baumgart and Lawrence Olson.

As Sophomores we placed our business in the hands of Duane Riedel, Floyd Stecker, Roberta Brehm and Beverly Hauser with Mr. Makhholm as our advisor. Carol Miller and Floyd Stecker were our carnival candidates.

As Juniors our important events began. Our Junior Prom was a big success. The theme was "An Old Fashioned Garden" with Roberta Brehm and Floyd Stecker reigning. Our officers were Raymond Smudde, Jerry Allmann, Ella Haas and Dorothy Gosse and Mr. Jackson as class advisor. Carnival candidates were Betty Beck and Kenny Laube.

As Seniors we elected Dave Loos, Pat Youmans, Lucille Gottschalk and Joyce Forbush with Mr. Jackson as class advisor. Our Senior Ball was a lot of fun with Betty Beck and Dave Loos reigning and our theme was "Stars In Your Eyes." Our carnival candidates were Betty Wussow and Clarence Tyznik. At last after being second for three years we came out first.

Thus as we are about to leave, after four jam-packed years full of events, we feel a bit sad to go out into a bigger world.

SENIOR CLASS OFFICERS



DAVE LOOS
President



PAT YOUMANS
Vice-President



LUCILLE GOTTSCHALK
Secretary



JOYCE FORBUSH
Treasurer

Class Will

WE THE CLASS OF '50 BEING OF SOUND MIND DO HEREBY MAKE PUBLIC OUR
LAST WISHES TO THE STUDENTS WE LEAVE BEHIND.

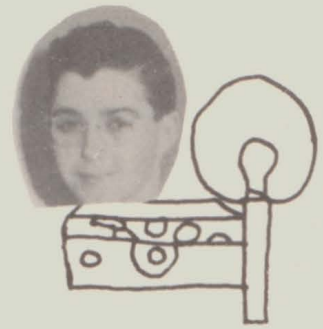
- I, Dale Steinke, will my ability to get along with the teachers, to anyone who wants to get into trouble.
- I, Grace Schorer, bequeath my giggles to anyone who wants to giggle better.
- I, Ronald Schmidt, will leave my manners and politeness to Emily Post.
- I, Pat Youmans, bequeath the waves in my hair to Lake Michigan.
- I, Delores Weyneth, will leave my vocabulary to Webster.
- I, Delmer Radeztsky, will leave nothing to nobody.
- I, Adeline Hansen, will leave with Clarence????? (Hard telling)
- I, Dorothy Gosse, will my new hair cut to the new look.
- I, Beverly Hauser, will say "I do."
- I, Roberta Brehm, will my diamond ring to anybody that can get it.
- I, Duane Riedel, will my drape shape to Myrtle Haas.
- I, Betty Beck, bequeath my nicknames, Comfort, Miss Grable, Esther, etc. to anyone who has a cultivated temper.
- I, Audrey Hederer, will hereby highly resolve to gain fifty pounds in the future.
- I, Lawrence Olson, will leave my cold hands and warm heart to the gentle people of my home town.
- I, Darlene Hanson, will my tallness to Marlene Dallman.
- I, Shirley Elstrom, will my ability to chew gum to Mr. McKernon.
- I, Bob Bane, will leave this school never to return again.
- I, Floyd Stecker, will continue to make up speeches while giving them.
- I, Jerry Allmann, will quit chasing women????
- I, Carol Miller, will all my man's jewelry to anyone who wants to be loaded down.
- I, Ella Haas, will my friendly personality to Joan Keller.
- I, Kenny Laube, will my long, curly eyelashes to the chickens.
- I, Bob Klaar, will say "I am the son of my Pa."
- I, Norman Daufenback, will my sleeping ability to Robert Sterzinger.
- I, Max Farning, will my ability to study to anyone with the ambition to.
- I, LaVonne Klessig, will my long fingernails to Shirley Young.
- I, Lucille Gottschalk, will my quietness to Harold Baumgartner.
- I, Clarence Tyznik, will my ability to drive the Hudson with one arm to anyone who has a driver's license.
- I, Robert Redlin, will my lengthy frame to Merlin Kilty.
- I, Mary Ann Weix, will take greater interest in Spencer.
- I, Marilyn Hasenohrl, will my typing ability to Dicky Young.
- I, Dale Rindfleisch, will my ability to swim to Duane Albrecht.
- I, Pete Gierl, will my tardiness to anybody who can get away with it.
- I, Beverly Redlin, will my ability at playing the piano to Lawrence Stettler.
- I, Henry Carr, will buy a Ford.
- I, Tom Forbish, will my "blinkers" to Tommy Jakel.
- I, Joyce Forbish and Betty Wussow, will our weekly visits too Mt. View Sanatorium to anybody who likes exciting weekends.
- I, Russell Kellner, will drop dead when the time comes.
- I, Edwin Ladwig, will revise the English language to suit himself.
- I, Marilyn Hackel, will my troubles to anyone that hasn't got any.
- I, Raymond Smudde, will clear a path for the women. (After all, who wants to get tramped on?)
- I, Garnetta Kowalk, will my good school spirit to the school.
- I, Wilbert Uhlig, will my drawing ability to Karl Hofman.
- I, Vern Buchanan, will continue to live.
- I, Lloyd Jastrow, will my ability to do the "Milwaukee Hop" to Dicky Aderhold.
- I, Joan Gierl, will my blue eyes to Elaine Sommers.
- I, Dave Loos, will my broken limbs to the Milwaukee Museum of Reptiles.

Any similarity to persons living or dead is purely coincidental.

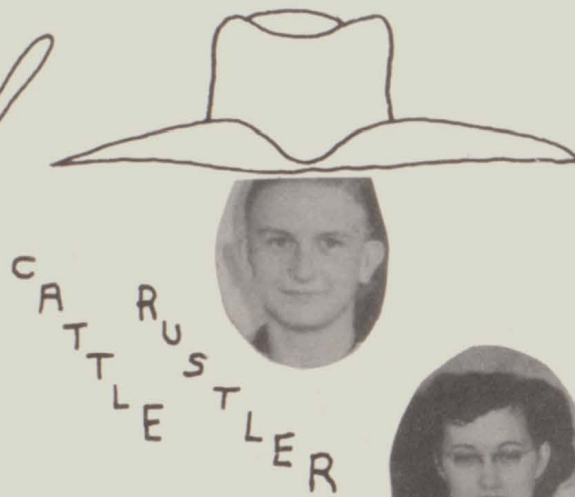
CLASS PROPHECY



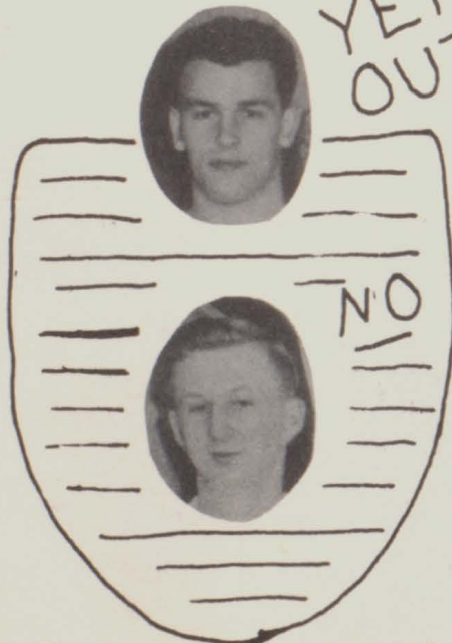
CHEF DAREDEVIL'S INC.



MR & MRS



R A W
TRIO



PAT THE UMP

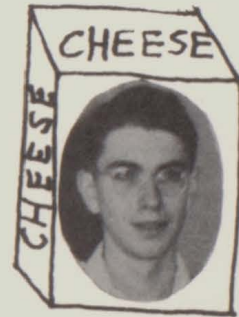
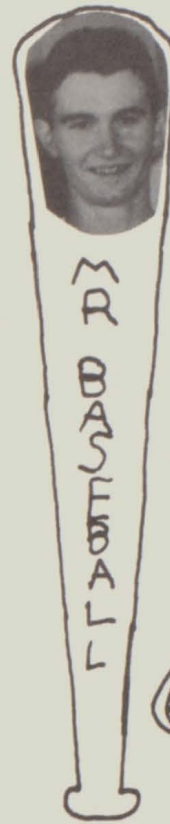


GLASS CUTTERS



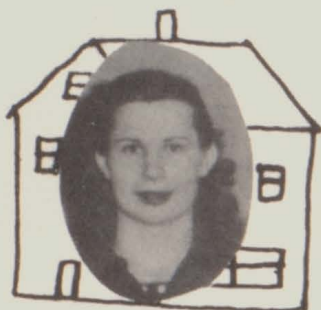


MODERN
TEACHERS



ASTAIRE & ROGERS II

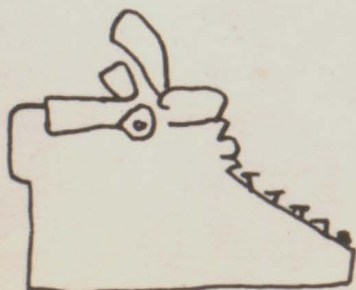




ANOTHER
GUSHER
CAME IN



FARMERS





Underclassmen



JUNIORS

Front to Back, Left to Right, Row 1: Joan Keller, Ione Schoelzel, Elayne Sommers, Anita Mielke, Naomi Hackel, Celia Wolf, Lorraine Laube, Russell Decker, Row 2: Mrs. Rannow, Harold Baumgartner, Wayne Hasseldick, Kenneth Schulz, Evelyn Primeau, Joyce Hofmann, Janet Flick, Bernie Ampe, Dick Aderhold, Row 3: Beverly Anderson, Joyce Feind, Alice Buddinger, Shirley Calbaum, Arlene Kreuger, Rose Ertl, Sharon Schultz, Ethel Giese, Florence Youmans, Row 4: George Zettler, Halver Becken, Fred Diedrich, Bob Sterzinger, Evelyn Mielke, Marie Podevels, Delores Schillinger, Row 5: Ambrose Schuh, Stanley Vrana. Emil Loskot (Not Pictured)

CLASS HISTORY

When the doors of Colby Hi opened in September of nineteen hundred and forty-seven, forty-eight freshmen enrolled with hopes of making a happy future.

The business was put in the hands of Harold Baumgartner, Joan Keller, Ethel Giese, Evelyn Mielke with Miss Heglund as our class advisor. Our Carnival candidates were June Johnson and Harold Baumgartner.

As sophomores our class enrolled with forty-one to make a successful year. The business was soon placed in the hands of Ambrose Schuh, Evelyn Primeau, Kenneth Schulz, Rose Ertl with Miss Heglund as our advisor. When Carnival time rolled around Stanley Vrana and Evelyn Primeau were candidates for king and queen.

As juniors we now have an enrollment of thirty-seven and our business is carried on by Stanley Vrana, Evelyn Mielke, Sharon Schulz, Joan Keller, with Mrs. Rannow as our advisor. Carnival candidates were Ethel Geise and Russell Decker. The big event of this year was our junior prom.

Our class as a whole has been very active in all school activities, and we are looking forward to even greater achievements in our senior year.



STANLEY VRANA
President



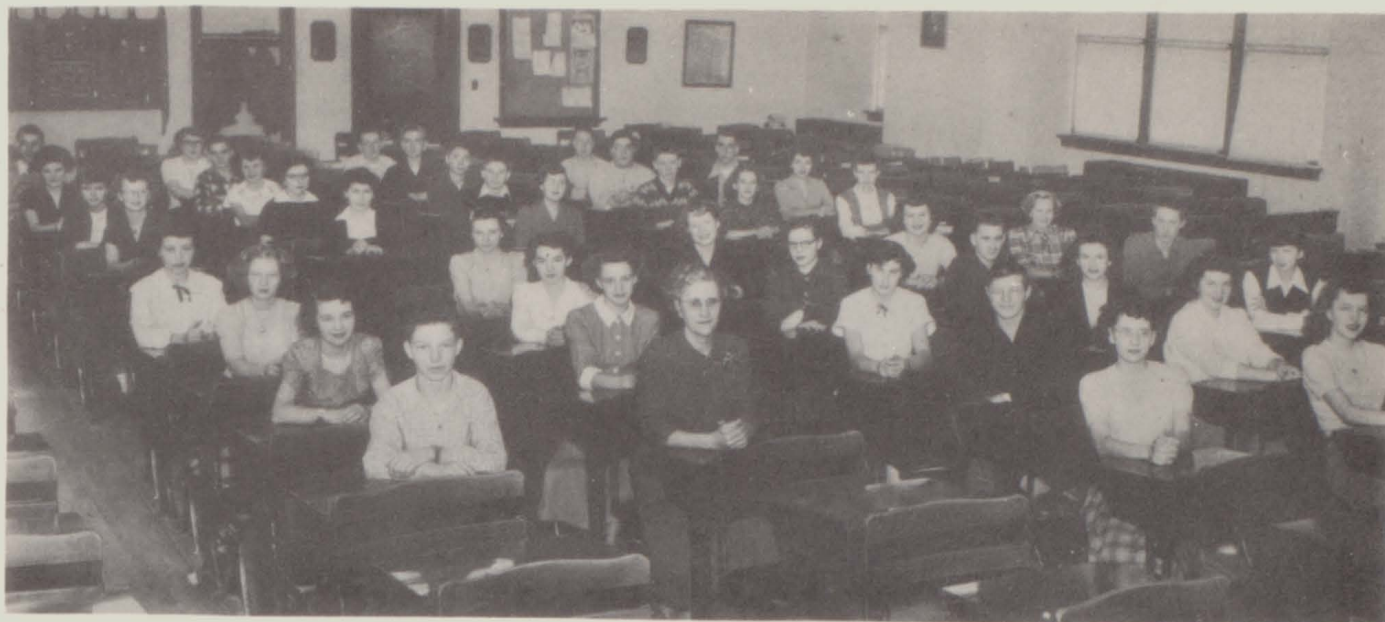
EVELYN MIELKE
Secretary



SHARON SCHULTZ
Vice-President



JOAN KELLER
Treasurer



SOPHOMORES

Front to Back, Left to Right, Row 1: Richard Young, Margie Leonhardt, Donna Mae Treankler, Joyce Scheelk, JoAnn Untiedt, Emarita Schoelzel, Mary Ann Schmitt, Kenneth Kasper. Row 2: Mrs. Hemphill, Marjorie Podevels, Margaret Sazama, Marilyn Loskot, Sally Schneider, Lucille Hoernke, Ruth Giese, Norman Ewert, Geraldine Bowen. Row 3: Ann Steinwand, John Burgdorf, Rita Brill, Pearl Erdman, Othelia Hansen, Muriel Brehm, Grant Smart, Harold Loskot, Gerald Klessig, Dale Kussrow. Row 4: Jo Anne Markus, Marlene Hibbard, Nancy Komis, Kenneth Hasenohrl, Margaret Bane, Grace Schulz, LeRoy Kops, Lawrence Stettler, Edwin Drews. Row 5: Suzanne Steinwand, Norman Meinke, Dorothy Wilson, Rheta Stammer, Beverly Cendt, Rodney Riedel.

CLASS HISTORY



RITA BRILL
President



GRACE SCHULTZ
Secretary

In August nineteen hundred and forty-eight, forty-two of us entered Colby High School. We were looking forward to a shining future throughout our school years.

With Mrs. Hemphill to guide us we elected as our officers Marlene Hibbard, Dorothy Wilson, Grant Smart, and Rodney Riedel. This year we have Mrs. Hemphill again, our officers are Rita Brill, Grace Schulz, LeRoy Kops and Franklin Hebert.

When Carnival time rolled around last year we had as our representatives Kenneth Hasenohrl and Margaret Sazama. We ended up in fourth place but are hoping to get to the top soon. This year we had Ruth Giese and LeRoy Kops as our king and queen. We got a little higher by winding up in third place.

This year we were able to do the initiating and we tried to make it fun for them and make it as easy on them as possible. We hope they enjoyed it.

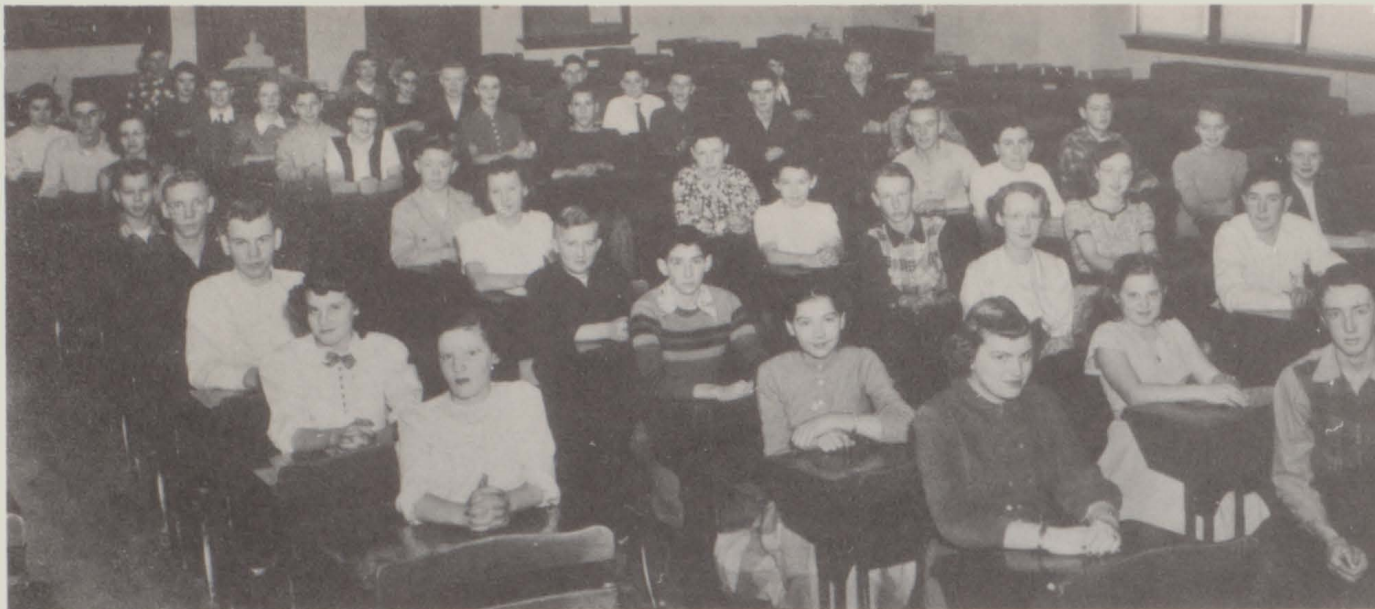
We think our class is an outstanding one and our aim is to prove to Colby High School that we are right.



FRANKLIN HEBERT
Vice-President



LE ROY KOPS
Treasurer



FRESHMEN

Front to Back, Left to Right, Row 1: Marie Frinak, Bernadine Leffel, Ray Forbish, Tom Koleske, Don Kaiser, Betty Kauffman, Jim Blanchard, Bernadette Engeldinger. Row 2: Miss Skogstad, Lois Langjahr, Ray Miller, Merlin Kilty, Shirley Feind, Duane Elstrom, Patty Apfelbeck, Edward Kowalk, June Becken, Stanley Voelker, Iris Brotherton, Ralph Hamann. Row 3: Thomas Jakel, Marlene Dallman, Donna Witte, Clifford Wentzel, Dorothy Sazama, Dale Apfelbeck, Valgene Fischer, Audrey Whitney, Roger Olson, Jo Ann Fristad, Delores Ertl. Row 4: Karl Hofman, Annabelle Klaar, Harold Strade, Dean Witte, Bob Peters, Galen Erdman, Gerald Uhlig, Leo Weix. Row 5: Myrtle Haas, Shirley Young, Duane Albrecht, Bernard Hackel, Bob Koleske, Rita Leonhardt.

CLASS HISTORY



ROGER OLSON
President



BOB PETERS
Secretary

On August twenty-eighth, nineteen hundred and forty-nine, forty-six studious students came to Colby High to enter the life as freshmen in high school and leave our rattles, dolls, and teething rings behind. We soon got our nicknames, "Greenies."

As our our class officers we elected Roger Olson, Bob Peters, James Blanchard, and Raymond Forbish with Miss Skogstad as our advisor.

Our initiation was a big event, the girls had to wear their hair in an up-sweep tied back with a green ribbon, their dresses inside out and backwards, no makeup, and two kinds of shoes. The boys wore makeup, their shirt and tie backwards and two kinds of shoes. In the evening we had a party.

When Carnival time came around our class chose Myrtle Haas and Bob Peters as freshman candidates for king and queen. Although we came out fourth place we enjoyed the struggle.

Our zealous ambition which is shown by our class so far this year shall prove successful by the time we are seniors I am sure.



JIM BLANCHARD
Vice-President



RAY FORBISH
Treasurer



M U S I C



SENIOR BAND

First Row: Ann Steinwand, Margaret Bane, Joanne Markus, Florence Youmans, Audrey Whitney, Billy Marquardt, Barbara Bender, Sandra Steinwand, Marié Schuh. **Second Row:** Marlene Dallman, Joanne Untiedt, Rita Brill, Phyllis Olson, Joan Keller, Muriel Brehm. **Third Row:** Joyce Scheelk, Donna Witte, Grace Schulz, LaVonne Klessig, Ruth Giese, Evelyn Mielke, Ethel Giese, Celia Wolf, Bob Bane, Kenny Kasper, Kenny Schulz, Ambrose Schuh, Shirley Calbaum, Rheta Stammer. **Fourth Row:** Mr. Hanson, Pat Youmans, Dave Loos, Evelyn Primeau, Beverly Redlin, Robert Klaar, Karl Hofman, Raymond Forbish, Bob Peters, Annabelle Klaar, Myrtle Haas, Shirley Young, Iris Brotherton.



JUNIOR BAND

First Row: Roberta Strathman, Patricia Becherer, Jean Tesmer, Betty Jane Kowalk. **Second Row:** Marvin Schillinger, Ila Schneider, Dennis Witte, Myron Schultz. **Third Row:** Joan Fristad, Adell Brehm, Paul Dins, Stuart Hunt, Richard Wiersig, Neal Schmidt. **Fourth Row:** Janet Olson, Gerald Uhlig, Lila Drews, Mr. Hanson.



CHORUS

First Row: Dorothy Wilson, Donna Mae Treankler, Grace Schulz, Muriel Brehm, Sally Schneider, Dorothy Gosse, Janet Flick, Celia Wolf, Nancy Komis, Shirley Elstrom. **Second Row:** Marjorie Leonhardt, Beverly Hauser, Beverly Cendt, Annabelle Klaar, Rita Brill, Lucille Hoernke, Lorraine Laube, Shirley Calbaum, Shirley Young, Joan Fristad, Audrey Whitney, Roberta Brehm. **Third Row:** Delores Schillinger, Margaret Bane, Donna Witte, Beverly Redlin, Delores Weyneth, Darlene Hanson, Sharon Schultz, Arlene Kreuger, Betty Wussow, Joyce Forbish, Grace Schorer, Suzanne Steinwand, Betty Beck. **Fourth Row:** Jerry Allmann, Lloyd Jastrow, Floyd Stecker, Patrick Youmans, Raymond Forbish, Fred Diedrich, Robert Redlin, Mr. Bender, Delmer Radetzky, Lawrence Olson, Bob Peters, Kenny Schulz, Lucille Gottschalk, Naomi Hackel.



MADRIGAL SINGERS

First Row: Mr. Bender, Joan Keller, Audrey Whitney, Sharon Schultz, Naomi Hackel, Evelyn Primeau, Donna Witte, Beverly Redlin, Delores Wyneth, Annabelle Klaar.

Second Row: Jerry Allmann, Wayne Hasseldick, Lloyd Jastrow, Patrick Youmans, Floyd Stecker, Kenny Schulz, Bob Peters, Grace Schulz, Margaret Bane, Dorothy Wilson.

MADRIGAL DANCERS





MIXED QUARTET

Audrey Whittney

Jerry Allmann

Floyd Stecker

Annabelle Klaar



MALE QUARTET

Kenny Schulz

Delmer Radeztsky

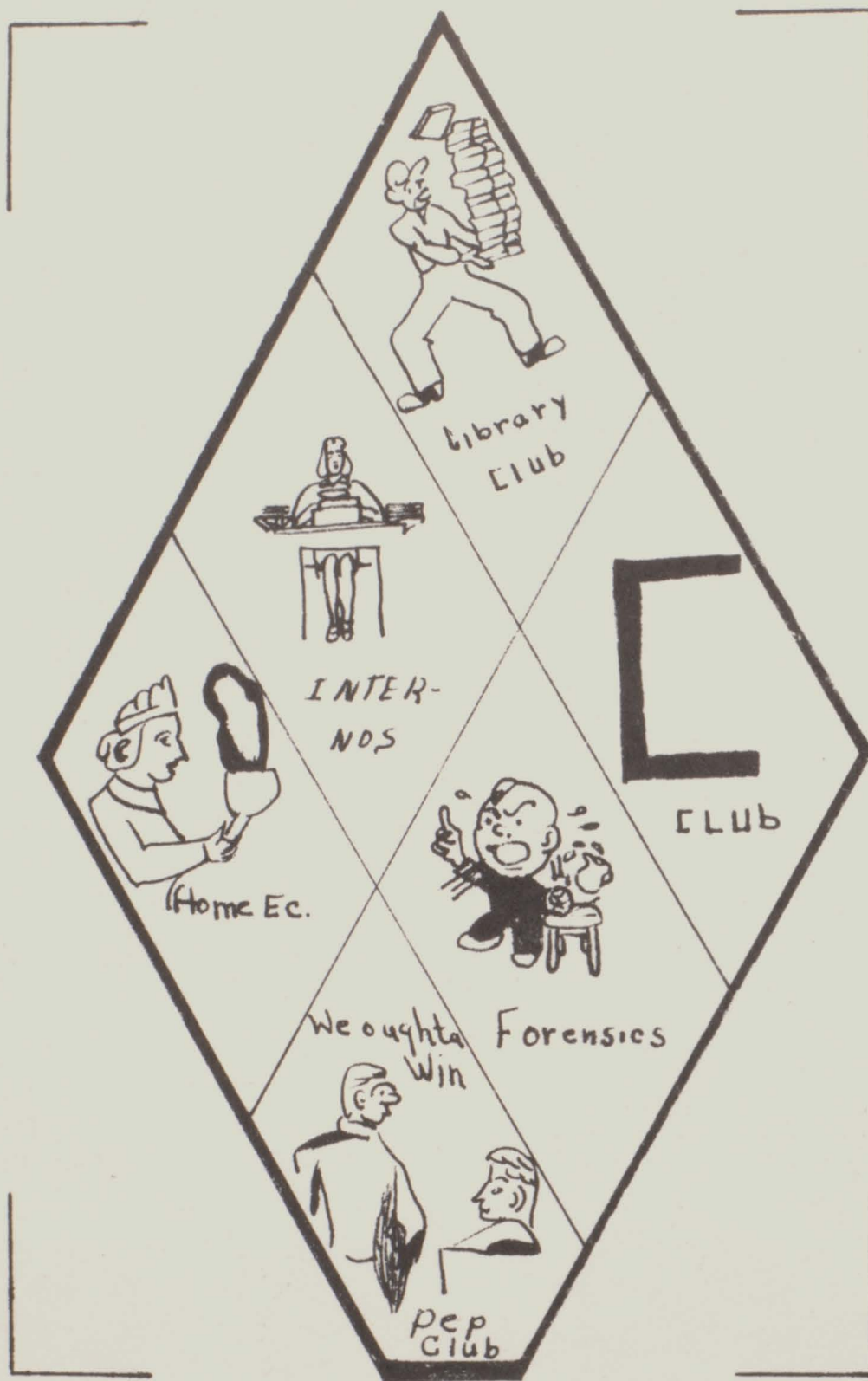
Floyd Stecker

Jerry Allmann



Mr. Alvin Glaeser

Our new teacher replacing Mr. Hanson, began his job here as Chorus and Band Director, and geography teacher on March 1. He attended the Milwaukee State Teacher's College and received a Bachelor of Science in Music Education. We hope you have enjoyed the school year and that your teaching career will be a big success.



Activities



F. H. A.

First Row: Evelyn Mielke, Joan Keller, Carol Miller, Darlene Hanson, Naomi Hackel, Joyce Forbish, Ella Haas, Miss Miller, Grace Schorer, Roberta Brehm, Sharon Schultz, Beverly Hauser, Shirley Elstrom. **Second Row:** Margaret Bane, Shirley Calbaum, Garnetta Kowalk, Marilyn Hackel, Marilyn Laskot, Ethel Giese, Rita Brill, Margaret Sazama, Florence Youmans, Marjorie Podevels, Ruth Giese, Pearl Erdmann. **Third Row:** Celia Wolf, Audrey Hederer, Delores Schillinger, Marie Podevels, Geraldine Bowen, Lucille Hoernke, Adeline Hansen, Joanne Untiedt, Anita Mielke, Alice Buddinger, Donna Mae Treankler. **Fourth Row:** Beverly Redlin, Lorraine Laube, LaVonne Klessig, Betty Wussow, Arlene Kreuger, Ione Schoelzel, Elayne Sommers, Joyce Hofmann, Joanne Gierl, Joyce Scheelk.

The year 1949-50 has been quite a successful one for the fifty-four girls belonging to our organization. Officers were elected as follows: President, Ella Haas; Vice-President, Roberta Brehm; Secretary, Sharon Schultz, who moved to Madison in March; Treasurer, Naomi Hackel; Parliamentarian, Joyce Forbish; Historian, Darlene Hanson; and Reporter, Grace Schorer. Evelyn Mielke was elected to replace the position of Sharon Schultz.

In January we had initiation of nine new members during the noon hour and after the installation we had a joint meal with the F. F. A. and the faculty as guests.

The F. H. A. girls sponsored a Sadie Hawkin's dance in the month of February. We also sponsored a Sock Dance. We served lunch at the Carnival.

Our chapter attended a F. H. A. rally at Thorp. A very large crowd attended and all groups reported that they had a very good time. Our chapter also took part in the F. H. A. demonstration contest. We wish to thank Miss Miller for her guidance in making our organization a successful one.



F. F. A.

First Row: Merlin Kilty, Grant Smart, Mr. Erdman, Tom Forbish, Floyd Stecker, Lawrence Olson, Harold Baumgartner, Stanley Vrana, Ray Smudde, Kenneth Schulz, Ambrose Schuh. **Second Row:** Stanley Voelker, Galen Erdman, Gerald Uhlig, Harold Strade, Vern Buchanan, LeRoy Kops, George Zettler, Richard Aderhold, Edwin Drews, Dale Kussrow, Edward Kowalk, Raymond Miller. **Third Row:** Richard Young, Dean Witte, Karl Hofman, Russel Kellner, Wilbert Uhlig, Robert Red'in, Clarence Tyznik, Ralph Hamann, Raymond Forbish, Lawrence Stettler, Norman Meinke, Norman Ewert, Dale Apfelbeck, (not pictured) Emil Loskot.

Under the expert guidance of our instructor Mr. Erdmann, the Colby Chapter again proved to be a very successful chapter. The officers elected for this school term are as follows: Floyd Stecker, President; Raymond Smudde, Vice-President; Stanley Vrana, Secretary; Lawrence Olson, Treasurer; Tom Forbish, Sentinel; and Harold Baumgartner, Reporter. The various activities which we took part in were basketball and softball and a trip to Eagle River is being planned for the Juniors and Seniors. A joint initiation party was held with the F. H. A. and was enjoyed by all. The 1949 and 1950 school year was very successful and we hope that next year will be even more successful.



F. F. A. BASKETBALL TEAM

Richard Young, Tom Forbish, Norman Meinke, Kenny Schulz, Grant Smart.



Dramatics and Forensics of 1949

First Row: Miss Skogstad, Mrs. Rannow, Mrs. Hemphill. **Second Row:** Jerry Allmann, Joan Keller, Shirley Calbaum, Lorraine Laube, Naomi Hackel, Delores Weyneth, Ella Haas, Beverly Anderson, Rose Ertl, Delores Schillinger, Evelyn Mielke, Evelyn Primeau. **Third Row:** Lloyd Jastrow, Wayne Hasseldick, Harold Baumgartner, Dave Loos, Bob Sterzinger, Fred Diedrich, Duane Riedel, Tom Forbish, Halver Becken, Sharon Schultz, Elayne Sommer, Ione Schoelzel. (Not Pictured) Don Primeau, Gloriette Olson, Jean Blanchard, Alvera Nosbisch, Clyde Brehm, Doris Langjahr.

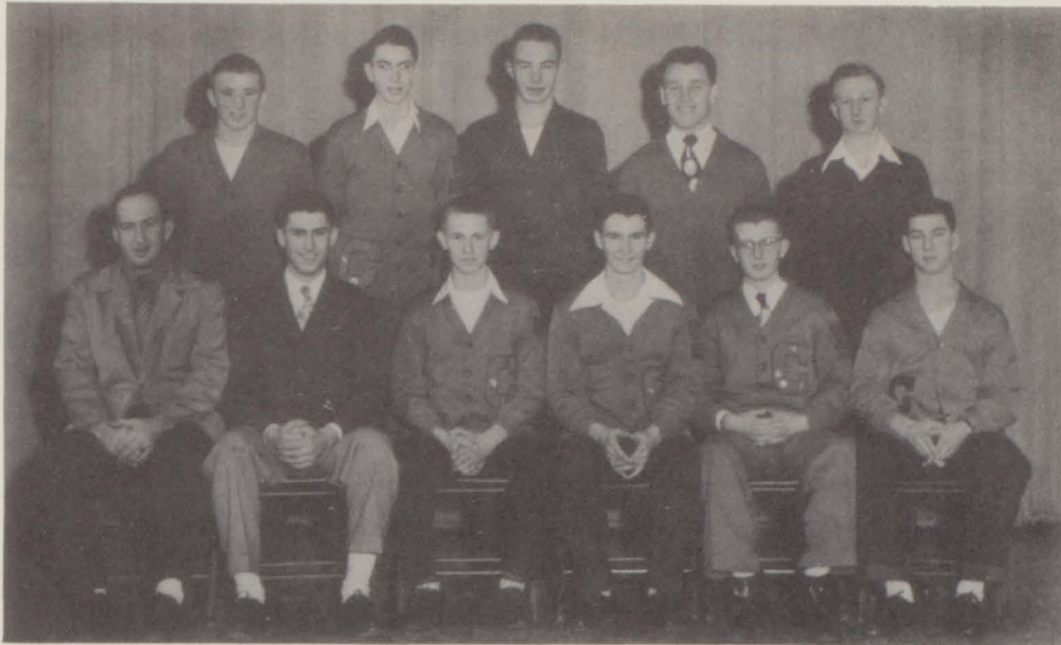
Clyde Brehm who participated in the forensic contest with the humorous declamation "Snoopopaths" greatly honored our school by receiving an "A" rating at league and state contests.



One-Act Play

Bob Sterzinger, Rose Ertl, Ella Haas, Tom Forbish, Lloyd Jastrow, Rodney Riedel, Sharon Schultz, Dave Loos, Florence Youmans, Duane Riedel.

The one-act play cast directed by Mrs. Hemphill received an "A" rating at the League contest and a "B" rating at the District contest at Stevens Point for their dramatization of "The Lord's Prayer," a scene depicted from the French Revolution.



"C" CLUB

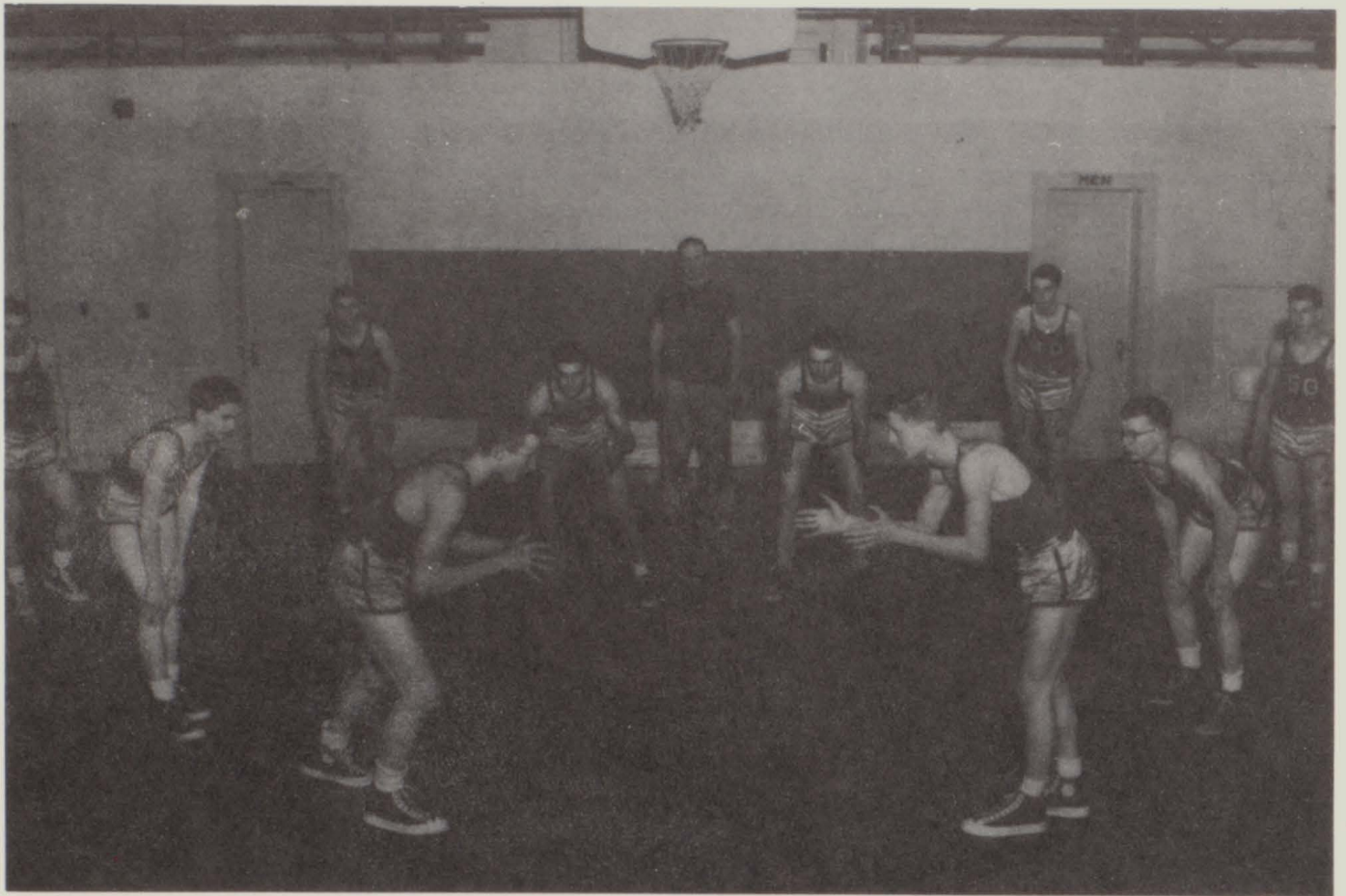
First Row: Coach McKernon, Clarence Tyznik, Floyd Stecker, Delmer Radeztsky, Dave Loos, Lawrence Olson.
Second Row: Harold Baumgartner, Dale Rindfleisch, Pete Gierl, Pat Youmans, Dale Steinke.



PEP CLUB

First Row: Dorothy Wilson, Evelyn Primeau, Audrey Whitney, Joan Keller, Ambrose Schuh. Second Row: Marlene Dallman, Dorothy Gosse, Annabelle Klaar, Ethel Giese, Shirley Calbaum, Betty Beck, Roberta Brehm, Mrs. McKernon, Mary Ann Schmitt, Celia Wolf, Carol Miller, Sally Schneider, Alice Buddinger, Evelyn Mielke, Beverly Hauser, Shirley Elstrom. Third Row: Marjorie Leonhardt, Grace Schulz, Margaret Bane, Muriel Brehm, Garnetta Kowalk, Donna Witte, Beverly Cendt, Delores Schillinger, Grace Schorer, Emarita Schoezel, Naomi Hackel, Rita Brill, Joanne Gierl, Rose Ertl, Anita Mielke, Bernadette Engeldinger, Florence Youmans. Fourth Row: Audrey Hederer, Joyce Hofmann, Delores Weyneth, Rheta Stammer, Sharon Schultz, Darlene Hanson, Joyce Forbish, Beverly Redlin, La Vonne Klessig, Lucille Gottschalk, Geraldine Bowen, Suzanne Steinwand, Joyce Feind, Arlene Krueger, Shirley Feind, Joyce Scheelk.

ATHLETICS





"A" SQUAD

Bernie Ampe, Lawrence Olson, Harold Baumgartner, Rodney Riedel, Dale Rindfleisch, Clarence Tyznik, Pete Gierl, Delmer Radeztsky, Dave Loos, Floyd Stecker, Coach McKernon.

"A" Squad Record

Dorchester	32 — Colby 37
*Greenwood	34 — Colby 31
Owen	38 — Colby 50
*Loyal	29 — Colby 32
*Spencer	25 — Colby 32
*Unity	22 — Colby 51
*Abbotsford	32 — Colby 47
Owen	24 — Colby 40
*Granton	38 — Colby 56

*Granton	22 — Colby 33
Abbotsford	33 — Colby 48
*Greenwood	25 — Colby 34
*Loyal	34 — Colby 38
Athens	37 — Colby 32
*Spencer	28 — Colby 33
*Unity	23 — Colby 29
Dorchester	49 — Colby 29

DIVISION CHAMPIONSHIP PLAYOFF

Greenwood	29 — Colby 33
-----------	---------------

3—C PLAYOFF CHAMPIONSHIP

Rib Lake	48 — Colby 52
----------	---------------

TOURNAMENT AT ATHENS

Dorchester	41 — Colby 34
Marathon	49 — Colby 45

CONFERENCE RECORD 9—1

NONCONFERENCE RECORD 5—2

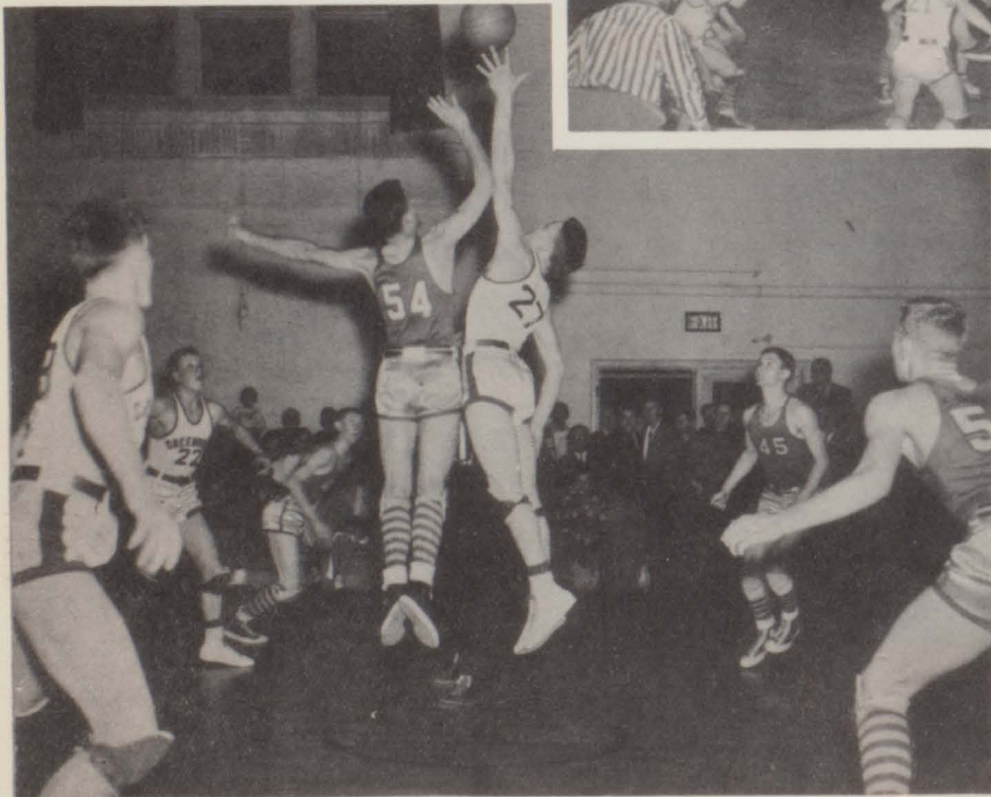
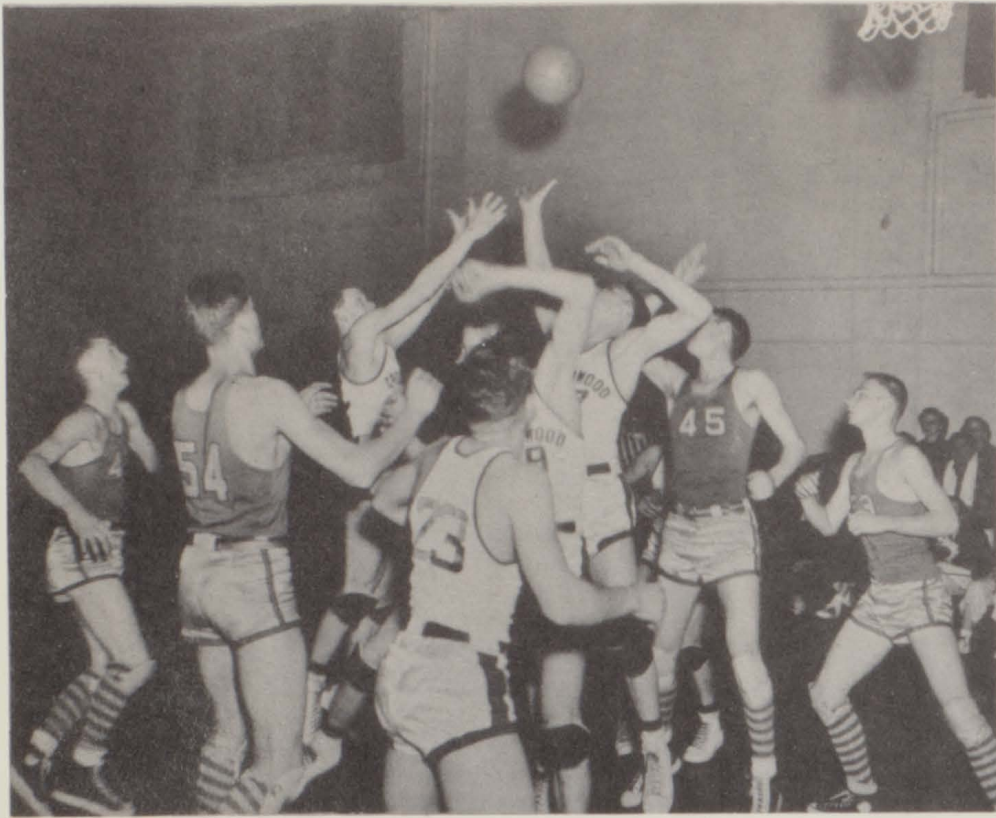
COMPLETE SEASON RECORD 16—5

AVERAGE POINTS PER GAME 38.35

OPPONENT AVERAGE POINTS PER GAME 30.88

* Denotes Conference Games.

The Honorary Captain elected at the end of the season was Delmer Radeztsky.





"B" SQUAD

Edward Kowalk
Tom Jakel
Duane Albrecht
Donald Kaiser
Roger Olson
Jim Blanchard
LeRoy Kops
Tom Koleske
Rodney Riedel
Fred Diedrich
Coach Youmans

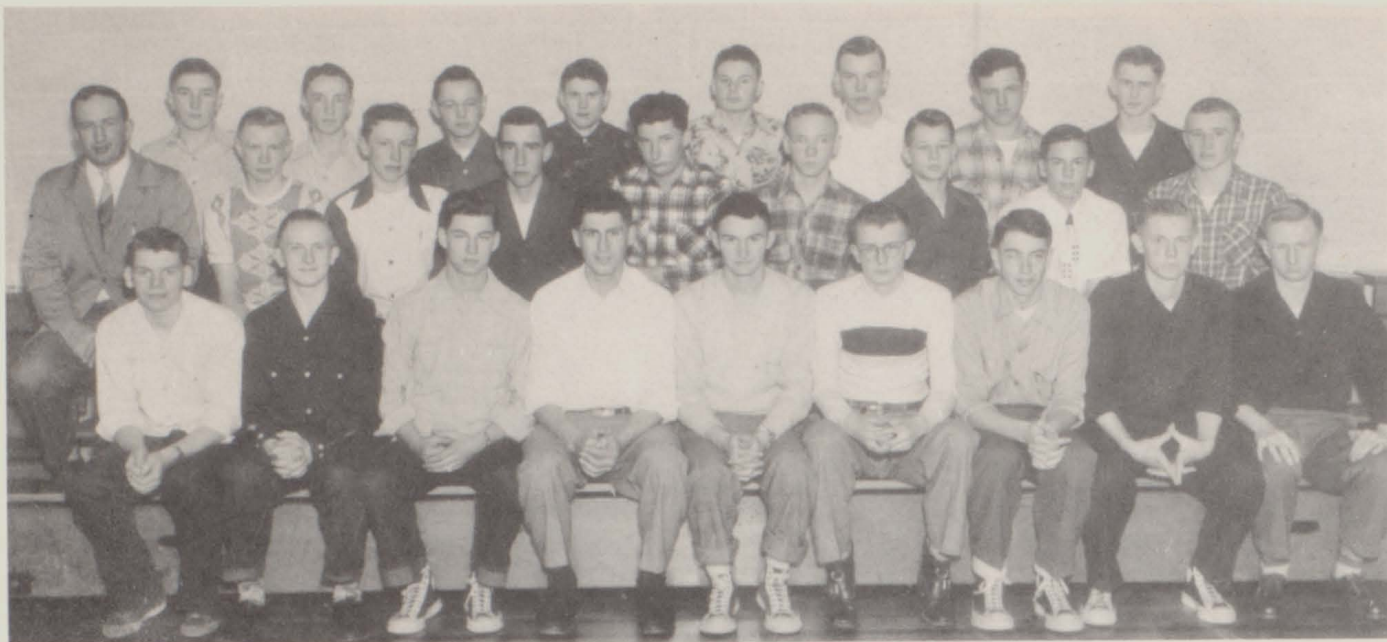
"B" Squad Record

The "B" squad had a very successful year with a record of 13 wins and 3 losses. The first game of the season they made a good start by beating Dorchester, 24-16. The game with Greenwood was a tie game ending 16-16. It was then called because of time to permit the "A" team game. At Owen, because of too much height the team lost 12-18. The "B" team really got hot winning nine straight by beating Loyal, 20-14, Spencer 19-15, Unity 37-13, Abbotsford 22-21, Owen 21-11, Granton 25-10, Abbotsford 28-27, Greenwood 22-14, and Loyal 13-11. The team then slowed up, bowing to Athens 17-21, and Spencer 20-22. The last two games of the season were won by trouncing Unity 34-14 and Granton 27-24 in a thrilling overtime game. The team totaled 389 points to their opponents 278, with an average of 23 points per game. This team should give a very good showing for Colby High next year.



Cheerleaders

Audrey Whitney, Dorothy Wilson, Evelyn Primeau, Ambrose Schuh, Joan Keller



Softball and Baseball

First Row: Tom Forbish, Bob Bane, Lawrence Olson, Clarence Tyznik, Delmer Radeztsky, Dave Loos, Dale Rindfleisch, Floyd Stecker, Dale Steinke. **Second Row:** Coach McKernon, Roger Olson, LeRoy Kops, Rodney Riedel, Ralph Hamann, Tom Koleske, Donald Kaiser, Valgene Fischer, Harold Baumgartner. **Third Row:** Karl Hofman, Tom Jakel, Duane Albrecht, Stanley Voelker, Grant Smart, Raymond Forbish, Russell Decker, Bernie Ampe.

Our Softball Team took the undefeated championship this year. The scores of games are as follows:

Dorchester	5	—	Colby	9
Unity	1	—	Colby	10
Rib Lake	5	—	Colby	10

Dorchester	9	—	Colby	10
Unity	3	—	Colby	11
Rib Lake	9	—	Colby	13



Volleyball

First Row: Tom Koleske, Karl Hofman, Tom Forbish, Russel Decker, Stanley Voelker.
Second Row: Clarence Tyznik, Harold Baumgartner, Delmer Radeztsky, Lawrence Olson, Dave Loos, Floyd Stecker, Dale Rindfleisch, Roger Olson, Donald Kaiser, Rodney Riedel.



1949 JUNIOR PROM

Left to Right. Grace Schulz, Ambrose Shuh, Joan Keller, Pat Youmans, Evelyn Primeau, Dave Loos, Dorothy Gosse, Lloyd Jastrow, Roberta Brehm, Floyd Stecker.

Our informal Junior Prom was given the evening of April 21. For our theme we chose "In an Old Dutch Garden." We decorated the hall accordingly with tulip gardens and lattice fences all around the hall, producing a very beautiful scene. The music was furnished by Howard Sturtz and his Swing Kings. At approximately 10:30 in the evening the grand march occurred with their majesties, Floyd Stecker and Roberta Brehm leading it. The grand march was preceded by the coronation. The court of honor was composed of Lloyd Jastrow, Dorothy Gosse, Dave Loos, Evelyn Primeau, Pat Youman, Joan Keller, Ambrose Schuh and Grace Schulz. After a very pleasant evening for all had come to an end, the band struck up with "Home Sweet Home" and we all departed with our escorts.



SNAP

We Seniors at Colby High take this opportunity to sincerely thank "Snap" Lukowicz and his wife for their services which have helped us to prepare our yearbook. We hope that they have enjoyed working with us as much as we have enjoyed working with them. Thank you, Snap and Tess!



FIRST ANNUAL HOMECOMING BALL

ROYALTY

KING: Dave Loos

QUEEN: Betty Beck



Theme:

"STARS IN YOUR EYES"

Decorative Colors

BLUE AND WHITE

CALENDAR OF EVENTS

AUGUST:

29—First day of school.

SEPTEMBER:

1—Pat arrived from Detroit.
5—No School; Labor Day.
8—Class rings arrived.
12—Election of class officers.
27—Senior Blue Jean Day—also a movie.

OCTOBER:

7—Senior Ball.
8—Bertsie's Diamond.
11—Assembly Program.
28—Shirley E. went to a wedding in Chicago.

NOVEMBER:

4—Senior girl's stayed after school for blowing bubbles.
10—FHA Rally at Thorp. Donkey Basketball Game.
12—FHA serves banquet for 4-H Club.
16—Career Day at Marshfield, Afternoon off for visual education.
17—Ronnie Sinclair took pictures. Pat wore his shoes on wrong feet.
18—Beat Dorchester, 37—32.
21—FHA served teachers dinner.
22—Lost at Greenwood, 34—31.
23-25—Thanksgiving Vacation.
29—Beat Owen, 50—38.
30—Dale S. admitted he was wrong.

DECEMBER:

2—Beat Loyal, 32—29.
7—Medford Normal presents Gay Nineties.
8—Basketball Boys get new jackets. Beat Spencer 32—25.
9—Sock Dance.
13—Senior girls start knitting.
16—Bev's diamond.
20—Beat Abby, 47—32.
22—Start Vacation.

JANUARY:

3—School again, Ronnie S. has glasses.
6—Beat Granton, 33—22. Seniors learned Gettysburg Address.
10—Semester exams. Beat Abby.
11—Semester exams.
13—Homecoming game beat Greenwood, 34—25.
Bev, Shirley, Dar and Bertsie have a weekend and house to themselves.
17—Movies; Mr. Youmans gives demerits.

18—No school, storm.
20—Beat Loyal.
23—Career Day at Wausau. Broke our winning streak at 10 games.
24—No school, storm.
26—No school, Beat Spencer.
31—Movie. Freshman skating party.

FEBRUARY:

1—Joint Band Rehearsal with Abby.
3—Beat Unity.
7—Movies—Lost at Dorchester.
10—Beat Granton.
12—Band Concert.
13—Beat Greenwood.
15—Medford Band Here.
16-17—3-C Playoffs—Beat Rib Lake.
21—Movie—Basketball boys have colds and flu from Friday night.
22-25—Basketball tournament at Athens. We lost.

MARCH:

1-3—No school, storm.
7—Movie.
13—Madrigal Program.
14—Assembly Program.
17—Assembly Program. School closed at 10:00.
21—Forensic Contest at Rib Lake-4A's. Spring came with a snow storm.
24—Sectional Volleyball tournament here.
31—Annual done.

APRIL:

1—Music Festival at Abbotsford. District Forensic Contest.
4—Movie.
5—Three one-act plays. Assembly program.
7-10—Easter Vacation.
14—Solo Contest at Medford.
15—State Forensic at Madison.
16—F. F. A. Boys to Trees for Tomorrow.
18—Movie.
21—Junior Prom.
29—Music Festival at Medford.

MAY:

2—Movie.
6—State Music Festival.
12—Senior Class Play.
14—Senior Class Trip.
18—Commencement.

ANNUAL

CARNIVAL



CORONATION

Myrtle Haas, Ruth Giese, Ethel Giese, Dorothy Wilson, Betty Wussow, Clarence Tyznik, Grace Schulz, Russell Decker, LeRoy Kops, Bob Peters



ROYALTY



PART OF MAIN SHOW



GLEE CLUB



BUS DRIVERS

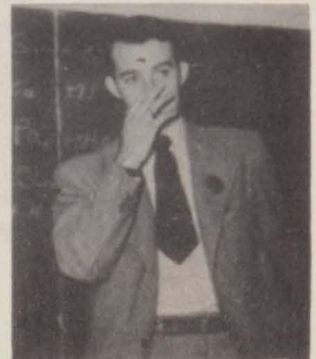
Norb. Diedrich, Al Schuh, Al Wiedenhoeft, Ray Gries, Otto Braun



KEEPER OF OUR SCHOOL

Whenever we hear the swish of brooms and jingle of keys we know it must be Bill. Every time help is needed or decorating is to be done, Bill knows a helpful way to do it. We seniors wish to thank you for all the cheerfulness shown us during our high school life.

SNAPSHOTS





"DOT"



EVE

ANN



"BECKY"!



SHIRLEY



MYRT



HOLD THAT POSE!



MIELKE GALS



MISS MILLER
& BROTHER



GRACE



KEN S.



MUGS



IRIS



HACKEL'S



BUDDY



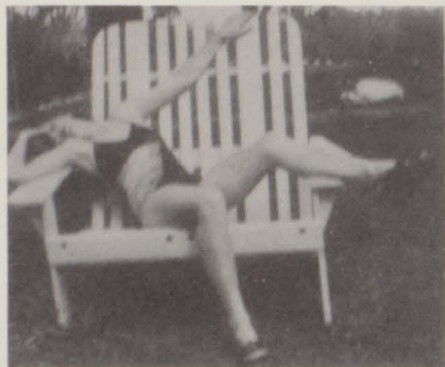
LOOK AT THAT PEN!!



EVE BUSY?



BLONDIE



I WONDER!?



VERN



MEDFORD '49



LUNCH ?



JOAN & ?



BIG WHEEL



NOON



MARY ANN



COMING OR
GOING ??



"GRANNY" REDLIN



DO YOU KNOW WHAT THEY'RE DOING?

IT GETS LATE SO EARLY



"CHARLIE THE COOK"



FARMER?



FLOYD



DALE
HOW DID YOU

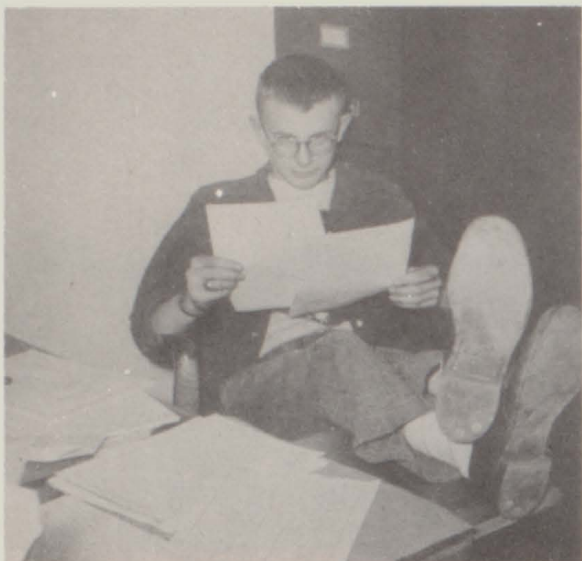


KEN L.



THE WEEK BEFORE THE BALL

GUYS GET ON THIS PAGE?



DAVID AT WORK???



IRISH



WHEN WE WERE GREEN



BEFORE THE
WEDDING



ALSO

BERT & DAVE



AT THE BEACH



OH MY!



DONKIES-??

THE COLBY GRADED SCHOOL



Seventh and Eighth Grades

Front to Back, Left to Right, Row 1: Wynola Koeppen, Bonnie Buddinger, Rochella Hanson. Row 2: Dennis Witte, Emilie Loos, Adell Brehm, Glen Herrmann, Dale Schmidt. Row 3: Richard Kops, Marlene Buddinger, Stuart Hunt, Ila Schneider, Joanne Wolk, Janet Olson, Dolores Romens. Row 4: Harold Meuller, Paul Dins, Richard Wiersig, Patsy Fischer, Janet Laube, Nile Thede, Alvin Kellner, Kenneth Hansen. Row 5: Mary Lindsay, Sara Salter, Carmen Flick, Alberta Beaver, Faye Hofman, Mary Belle Smart, Edward Fricke. Row 6: Dolores Schneider, Darlene Malle, June Jewett, Delbert Morrow, Barbara Bender, Teacher: Mr. Wright.



Fifth and Sixth Grades

Front to Back, Left to Right, Row 1: Jay Schantini, Robert Hofman, Barry Dorazio, Ralph Sossoman, Neal Schmidt, Yvonne Pacholke, Arlene Baumgart. Row 2: William Schorer, Allen Schjoneman, Wilmer Schmelzer, Shirley Elstrom, Delores Loskot, Kay Schultz, Cairgene Molle. Row 3: Margaret Braun, Ellis Langjahr, Jerry Mueller, Doris Haas, Bobby Lindner, Paul Berkholtz, Darlene Scheuneman. Row 4: Lester Scheuneman, Ruth Wiersig, David Markus, Oscar Koffarnus, Nancy Roth, Janet Raasch, Anita Ertl. Row 5: Jack Deets, Roger Ohlinger, Dixie Sossoman, Ellen Romens, Nancy Buckholz, Gloria Hanson, Nancy Beightal. Teacher: Mrs. Hibbard.

Grade School Carnival

The annual Grade School Carnival which was held October twenty-first, was a big success. Mr. McKernon, of the Colby High School, entertained the audience as Master of Ceremonies. Various organizations sponsored contestants for the main program. The winners of the main show were Colby Grade School, first place; Colby High School, second place; and the V. F. W. Women's Auxiliary, third place.



Third and Fourth Grades

Front to Back, Left to Right, Row 1: Bonnie Fischer, James Johnson, Betty Braun, Darlene Romens, Ronald Deets, Penny Schreiber, Alvin Mueller, Robert Berkholtz. Row 2: Clarence Klimpke, Neal Langjahr, Marla Schnelle, Ervin Kayhart, Janice Schjoneman, Linda Loos, Bonnie Jean Scheelk, Janice Grauman. Row 3: Ellen Flick, Iona Scheuneman, David Cross, Dorothy Drews, Janice Schnelle, Wayne Hibbard, Janice Fischer. Row 4: Mike Peters, Sandra Mueller, Audrey Baumgart, Teddy Drews, Janet Romens, Jeanne Tesmer, Arlynn Schneider. Teacher: Mrs. Erdmann.



Second Grade

Front to Back, Left to Right, Row 1: Sandra Loos, Irene Haas, Donna Rae Thieme, Sanford Johnson, Donald Smart, Wayne Flick. Row 2: Albert Thede, Karen Klessig, Jean Berkholtz, Gladys Schneider, Dennis Schmidt, Katherine Koffarnus. Row 3: Donald Wibben, Dawn Wright, Duane Romens, Dixie Kocian, Duane Frahmman, Betty Kayhart, Janet Case. Row 4: Terry Zrutskie, Donna Hansen, Colene Edblom, Dennis Brandt, Connie Buchholz, Carol Krauter, Dicky Mueller. Teacher: Mrs. Ketterl.



First Grade

Front to Back, Left to Right, Row 1: Robin Strathman, Sandra Krauter, Richard Lehmer, Karen Schjoneman, Joann Schrieber. Row 2: Connie Kocian, Helen Hofman, Roger Luzinski, Virginia Gullick, Dennis Frome, Russell Krueger, Kenneth Ramker. Row 3: Stanley Luzinski, Patti Roohr, Louise Davis, Harold Langjaahr, James Engersol. Row 4: Daniel Fischer, Dean Loos, Linda Cross, Robert Frome, David Stammer. Teacher: Miss Keller.



Faculty

Anita Hibbard, Eileen Keller, Clayton Wright, Esther Ketterl, Vera Erdmann.



Softball Team

Left to Right, Row 1: Ken Laube, Glenn Herrmann, Richard Kops, Richard Wiersig, Ralph Sossoman, Dennis Witte, Kenneth Hansen, Paul Dins, Duane Riedel. Row 2: Harold Mueller, Nile Thede, Alvin Kellner, Edward Fricke, Delbert Morrow, William Schorer, Dale Schmidt, Jay Schantini, Stuart Hunt.



Girls' Glee Club

Left to Right, Row 1: Mrs. Hibbard, June Jewett, Delores Romens, Ila Schneider, Faye Hoffman, Barbara Bender, Delores Schneider, Joanne Wolk, Wynola Koeppen, Darlene Molle, Patsy Fischer. Row 2: Emilie Loos, Cairgene Molle, Kay Schultz, Shirley Elstrom, Alberta Beawer, Bonnie Buddinger, Arlene Baumgart, Janet Olson, Mary Lindsey. Row 3: Doris Haas, Delores Loskot, Marlene Buddinger, Janet Laube, Mary Belle Smart, Carmen Flick, Rochelle Hansen, Adell Brehm, Sally Salter, Darlene Scheuneman, Yvonne Pacholke.

SPONSORS OF THE EAU PLEINE

	PAGE
THE MARSHFIELD CHAMBER OF COMMERCE	48
GREGORY HARDWARE	39
COLBY THEATER	10
HARMONY CO-OP PRODUCE COMPANY	32
O & N LUMBER COMPANY	34
COLBY STATE BANK	32
SECURITY STATE BANK	29
LUKOWICZ STUDIO	41
SCIDMORE'S JEWELRY	25
LOOS MACHINE SHOP	37
C. J. BANE & SON	8
RIEDEL'S CHEESE FACTORY	14
JOHNSON SILO COMPANY	7
ARTHUR SCHMIDT, MADISON SILO COMPANY	14
W. RINDFLEISCH CHEESE FACTORY	13
H. H. MOTOR COMPANY	45
COLBY IMPLEMENT COMPANY	11
LEHMER SHIELDS CLINIC HOSPITAL	23
F. W. LULLOFF	26
A. F. ZILLMER COMPANY	36
LAMONT SERVICE STATION	35
KRIPLEAN BROTHERS LTD.	34
COLBY CREAMERY	34
ANDY'S SERVICE	24
TED'S SERVICE STATION	30
CLOVER FARM STORE, J. LEONHARDT	31
GAMBLE STORE DEALER, E. WITTE	24
DON'S CLOTHES SHOP	30
CENTRAL CO-OP SHIPPING ASSOCIATION	23
STIEBER LOCKER SERVICE	40
STIEBER BOTTLE GAS	40
HEDLER'S I. G. A.	35
STURNER-CROSS AGENCY	31
KLAAR JEWELRY	13
HAROLD KLESSIG CHEESE FACTORY	13
BID'S EAT SHOP	36
COLBY CHEESE BOX COMPANY	29
NORTHSIDE TAVERN	29
JOE'S ELECTRIC SHOP	42
JOHNNY'S BAR & BOWLING ALLEY	38
KARL LAUBE, RUHMS PHOSPHATE SALES MANAGER	13
EMILIES DRESS SHOP	42
TRICO MILLING COMPANY	28
STAR BOTTLING WORKS	28
DR. A. L. SCHEMMER	28
BIG "W" SERVICE STATION	38
LARRY'S SERVICE STATION	27
MIDGET CITY MEAT MARKET	27
G. T. VORLAND, ATTORNEY	27
MUELLER'S CAFE & TAVERN	27
COLBY PHONOGRAPH	33
ROBINSON HOTEL	33
WALTER'S PAVILION	33
FROMES DAIRY	28
RANNOB BROTHERS	33
COLBY-ABBOTSFORD AIRPORT	44
NELSEN DRUG STORE	44
REEVES BARBER SHOP	44
WIERSIG & DINS	44
KREPSKY & NECK	44
SABLER STORE	43
J. J. YOUMANS	15
H. J. WELSCH	43
CARL MUNDT	43
HOWARD HAUSE, BARBER	43
JAKE HAUSER	12
A. X. UMHOEFER	38
CHEROKEE GARAGE	9





