

THE

GEOPHYSICAL

1

9

4

6



THE
**FO
PL
E
N
E**



1946

Edited BY
Class of '46

Hi K ids,

Here's your Annual. We
know it's different, but it's
fun to be different sometimes.

We hope you'll like
it —

Annual staff



FACULTY



M. Hake -

FACULTY



Mr. Bender
Mathematics



Mr. Bushman
Science, Coach. (Resigned)



Miss Carver
History, Social Science
Math 9, Band



Miss Heglund
English



Mr. Kalina
Science, Coach



Miss Ludwig
English, Civics, Health
Geography, Chorus



Mr. Pynnonen
Agriculture



Mrs. Tweit
Commercial (Resigned)



Mrs. Wernzenski
Home Economics



Mrs. Mason
Commercial



DEDICATION

To Patricia Carver, our advisor for the past three years, whom we admire for her understanding, patience, keen sense of humor, friendliness and consideration of our class, and who helped make our high school years a success.

SENIORS



M. Hase -



Howard Barr, Iris Brehm, Marcia Schultz, Robert Ebert.

CLASS NONSENSE

A active - - - - - Wilbur Gierl
 B blushing - - - - - Jacinta Becken
 C courteous - - - - - Robert Ebert
 D dignified - - - - - SENIORS(?)
 E enthusiastic - - - - - none of us
 F flirting - - - - - Doris Elstrom
 G glamorous - - - - - Mae Fricke
 H hungry - - - - - Eileen Gutenberger
 I intellectual - - - - - Norbert Wolf
 J jitterbug - - - - - Ambrose Sterzinger
 K killer-diller - - - - - Carl Priem
 L long - Howard Barr and Evelyn Andrew
 M musical - - - - - Eugene Prien

N natural - - - - - Charles Riese
 O original - - - - - Davie Frane
 P pleasant - - - - - All of us
 Q questioning - - - - - Marjorie Young
 R regal - - - - - Wilbert Smudde
 S single - - - - - All of us old maids.
 T tiny - - - - - Thorwald Fristad
 U unambitious - - - - - well? ? ?
 V vivacious - - - - - Marie Hake
 W winsome - - - - - Doris Schoelzel
 X exclusive - - - - - Bernelda Thorson
 Y young - - - - - Who Isn't
 Z zealous - - - - - Iris Brehm



EVELYN ANDREW

"Andy"

"Oh, those beautiful eyes!"



HOWARD BARR

"Howie"

"If arguing were money,
I'd be a millionaire."



JACINTA BECKEN

"Sandy"

"She's quiet in school, but
out of school, you'd be
surprised."



ROBERT BEYERL

"Bob"

"Chase me girls, I'm lots of
fun."



WAYNE BIRKETT

"Buckett"

"Occasionally with my brain
I quietly think a thought."



IRIS BREHM

"Sometimes quiet, sometimes
shy,
But the rest of the time--
Oh, my!"



ROBERT EBERT

"Bob"

"A lion among the ladies."



DORIS ELSTROM

"Dorie"

"The moon--a clever arrange-
ment under which to spoon."



DAVID FRANE

"Zeke"

"Sure I'll do it--Only give me
time."

MAE FRICKE

"Maizie"

"Chicago -- here I come."

THORWALD FRISTAD

"Swede"

"A friend to everyone, an
enemy to none."



WILBUR GIERL

"Willy"

"One of our 'ummmmmmm'
men."

EILEEN GUTENBERGER

"Boots"

"Dates are her favorite
fruit."



MARIE HAKE

"Life is just one man--after
another."

ROBERT HEMMY

"Bob"

"Of all the things I like the
best, I'd much prefer to sit
and rest."



IRMA HOERNKE

"It is not wise to be wiser
than necessary."

CARL PRIEM

"Carlos"

"Not that I don't love study,
but I love mischief more."



EUGENE PRIEN

"Gene"

"One-fourth gentleman and
the rest sheer nonsense."

CHARLES REISE

"Charlie"

"This learning--What a bore."





ORVILLE REX

"Rex"

"My teachers--how they
love me!"



DORIS SCHOELZEL

"Dorie"

"Happy I am, from care
I am free!"



GEORGE SCHMIDT

"Chuck"

"Too much study ain't
good for youngsters."



WALTER SCHNEIDER

"Pike"

"A little after eight,
Off to his girl's for a
date."



MARCIA SCHULTZ

"Slits"

"I didn't come to school
to study."



WILBERT SMUDDE

"Smudde"

"In him 'tis natural to
please."



AMBROSE STERZINGER

"Brosie"

"Although I have lots of wit,
I'm shy of using it."



BERNELDA THORSON

"Berne"

"The world was made to be
enjoyed, and she makes the
best of it."



NORBEST WOLF

"Potski"

"A boy of unknown quality,
that only those who know
him can see."



MARJORIE YOUNG

"Midge"

"All work and no fun isn't
for me."

CLASS PROPHECY

How dear to my heart are the scenes of my school-days
When fond recollection presents them to view.
The notebooks, the schoolrooms, the oft-traveled stair-ways.
And every loved spot which during my school-days I knew.
Those dearly loved schoolmates, the friendships so treasured,
And often at noon, when returned to the school.
When a test, the teacher in accents so measured
Would give us; we, our knowledge would pool.
Now our paths we have parted,
And have all gone our way.
Our lifework have started,
Which I'll explain, if I may.

* * * * *

Date: Jan. 1, 1960

Evelyn Andrew is now a happy housewife in the State of Arkansas. She is the loving mother of 16 children while her husband-----

Howard Barr is a traveling salesman employed by the Fuller Brush Corporation. He also serves as a temporary assistant to Robert Hemmy.

Ambrose Sterzinger is a well-known song writer and cartoonist. His latest song, "Way Down Upon the Eau Pleine River" may be purchased complete with illustrations at any high-class music store.

Eugene Prein is the croon king of the day. Eugene recently married Olga Pitzelfitz-simmons-kliny, famous Swedish movie star.

Bob Ebert--Professor of speech at Vassar (Girl's) College.

Doris Elstrom--Housekeeper at the Gosse home in Colby.

Marie Hake--manufacturer of the Hake Cosmetics--is now living in Athens, Wis. She is also the proud mother of five very tough little boys.

Irma Hoernke--tester of the Hake Kissproof Lipstick.

Bob Hemmy--Chairman of the American Debating Society.

David Frane--inventor of the famous "Infallible Hair Tonic" which guarantees a luxurious head of hair in just 13 days. David, I am sorry to say, is a bad advertisement for his product. He has just one hair left on his head. In his efforts to keep this lone lock, David employs-----

Eileen Gutenberger--now known in her professional capacity as "Madame Elene," a famous hairdresser from Hollywood, who has been successful in her efforts during the

last 8 years to keep her employer's single hair on his head.

Walter Schneider--manager of the Northwestern Mill.

Wilbert Smudde--owner of a skunk farm.

Marjorie Young--woman doctor in an Army hospital.

Thorwald Fristad--manager of the Cuba branch office of the Havana Cigar Corporation.

Charles Riese--manager of a model agency. His feminine models are said to be the most beautiful girls in the world.

Robert Beyerl--sports commentator on station A V I S.

Iris Brehm--professional dancer.

George Schmidt--comedian and famous wit. His radio program is sponsored by Seldrig Tdimhes, which is his product spelled backwards.

Norbert Wolf--professor of Math. at Vassar College, which also employs his former schoolmate, Professor Robert Ebert.

Carl Priem--movie star. Critics say he is a second Van Johnson.

Orville Rex--principal of the Colby Graded School.

Jacinta Becken--Mrs. You-Know-Who of Colby. Bernelda Thorson--manager of the Colby Telephone Office.

Mae Fricke--noted designer of the famous "Fricke Frocks." Mae has received many movie offers, but has turned them down on grounds that a career would threaten her marital bliss.

Wayne Birkett--owner and manager of the former Mueller's Restaurant in Colby. Yes, Ila is still waitress.

Doris Schoelzel--wife of the retired Army chief of staff, is now residing in Washington, D. C.

CLASS WILL

Evelyn Andrew wills her attraction for boys (especially a certain Senior boy) to Irene Beawer.

Howard Barr is debating whether or not he should leave Andy.

Wayne Birkett leaves his G.I. haircut to Clyde Brehm.

Jacinta Becken leaves her ability to blush to Gloriette Olson.

Iris Brehm wills her quiet ways to Paul Firnstahl.

Robert Beyerl hates to do it, but he must leave Avis to the other wolves in school.

Bob Ebert leaves his own special language to Rueben Frome.

Doris Elstrom wills her name to whomever wants it. She probably won't have use for it much longer.

David Frane leaves his curly hair to Wallace Hamann.

Eileen Gutenberger wills those big brown eyes to Charlotte Cosgrove.

Marie Hake leaves all her good times to Faith Mabbott.

Bob Hemmy leaves his ability in polemics to Dale Stammer.

Irma Hoernke wills her red curls to Elaine Johnson.

Eugene Prien leaves his Darlene to anybody with a jalopy as good as his.

Orville Rex leaves his singing voice to Don Primeau.

Walter Schneider leaves his laugh to Erma Podevals.

Doris Schoelzel had decided to keep that certain discharged Sargeant.

Wilbert Smudde wills his height to Jimmy Gutenberger.

Ambrose Sterzinger leaves his breaking voice to Elmer Miessner.

Charles Riese wills his flat tires to Adrian Gries.

Marjorie Young wills her love of thunderstorms (Lightning) to Betty Stoltzman.

Norbert Wolf leaves all those A's to the basketball team.

George Schmidt leaves his mischievous habits to Bill Bauer, Jr.

Thorwald Fristad wills his smoking habits to Howard Kumbier.

Mae Fricke leaves for Chicago in a hurry.

Wilbur Gierl leaves that certain blonde to Herbert Hoernke.

Carl Priem leaves in haste.

Bernelda Thorson wills her sense of humor to the teachers!

Marcia Schultz leaves her tardiness to Patsy Reeves.

The Senior Class as a whole leave their dignified ways to the Freshman.

UNDERGRADUES



M. H. Abe -

WE LEAD

JUNIORS

Larry Thorson
William Apfelbeck
Victor Koleske
Elaine Johnson



SOPHOMORES

Donald Schulz
Milton Prien
Janet Sazama
Fred Klappert

FRESHMAN

Audrey Singstock
Don Primeau
Gloriette Olson
Erma Schumacher





JUNIORS

Third Row: Miss Heglund, F. Klaar, R. Nelson, P. Steinwand, R. Orth, P. Firnstahl, R. Tesmer, E. Miessner, W. Apfelbeck, V. Koleske, A. Gries.

Second Row: A. Syring, B. Stoltzman, I. Podevels, L. Elstrom, D. Young, J. Sixel, L. Baumgartner, A. Calbaum, J. Arquette, S. Brehm, E. Fechhelm, L. Frome.

First Row: L. Kunze, E. Brockhaus, I. Buettner, H. Klumb, E. Johnson, V. Syring, L. Gieger, M. Keller, L. Thorson, J. Schoelzel, E. Schulz.

CLASS HISTORY

At last we're Juniors! We, the class of "47" find ourselves in that envious position just below the seniors. Looking back to the time when we were freshmen we've decided that we couldn't possibly have been as "green" as the Freshmen who followed us were.

As Freshmen, we elected Lucille Baumgartner as president, Eugene Wehrman as vice-president, Verna Herrmann was our secretary and Bernard Neitzel was the treasurer. We helped our country and our school by taking charge of the War Bond and Stamp Sale. Miss Carver was our class advisor.

Under Mrs. Wernzenski's guidance, the thirty-five sophomores were led by Toby Tesmer as president, Ronald Nelson, secretary, and Jeanette Sixel, treasurer.

As Juniors, we elected Billy Apfelbeck, president, Larry Thorson, vice-president, Victor Koleske, secretary and Elaine Johnson as treasurer. Miss Heglund acted as our advisor.

As Freshmen, Lennice Frome and Bernard Neitzel were our Carnival candidates. Arlene Syring and Amos Foster represented our class in 1944 and then----- Oh, happy day! Toby Tesmer and Harriet Klumb reigned as king and queen of the carnival in 1945. It was a close race, but we were victorious.

This year we also put on a prom and we made a flying success of it. Every-one had a grand time at this annual event and will long remember it.



SOPHOMORES

Fourth Row: A. Ballerstein, L. Rankel, R. Gierl, A. Sachse, M. Neuman, E. Edblom, M. Beyerl, Mrs. Mason, H. Kumbier, F. Klappert, J. Häuser, E. Schilling, V. Kasper, W. Sterzinger.

Third Row: C. Cosgrove, A. Gries, M. Schmidt, R. Stoltzman, P. Sassaman, T. Thorson, M. Casey, M. Schuh, M. Wolff, J. Elstrom, J. Reel, D. Birkett, P. Weix, E. Forbish.

Second Row: W. Arends, M. Cendt, M. Brill, G. Smudde, D. Van Dreel, V. Fristad, E. Neuhaus, P. Scheel, A. Mielke, M. Prien, R. Frome, B. Brill.

First Row: D. Stammer, M. Case, J. Sazama, M. Anderson, L. Giese, M. Treankler, E. Wehrman, D. Schulz, D. Becken, H. Gosse, I. Beawer, D. Will, E. Kellner, F. Beyerl, T. Brill.

CLASS HISTORY

This year the sophomores can look back on two successful beginning years. They entered fifty-seven strong as freshmen in 1944 and next year most of them will be back again as juniors.

At our first meeting as a class last year we started off by electing from our midst Donna Van Dreel, Bob Gierl, Howard Kumbier, and Don Schulz to see that all the business of the class was kept in good order. This year matters were in the hands of Don Schulz, Janet Sazama, Milton Prien, and Fred Klappert.

Carnival time brought to the sophomore

class the traditional excitement and fun. Last year our candidates, Don Schulz and Donna Van Dreel ran a close second and this year's candidates Janet Sazama and Don Barr held third place.

We were sorry to see our class advisor, Mrs. Tweit, leave us to join her husband who had just returned from overseas but she left her "problems" to her successor, Mrs. Mason.

Our class is "up and coming" and by the time we're on the top we expect to make an important place in the history of Colby High.



FRESHMEN

Fourth Row: R. Voelker, C. Brehm, W. Hamann, H. Hoernke, J. Allar, G. Kobs, N. Sill, Miss Ludwig, H. Rankel, V. Kozik, D. Diedrich, B. Rex, B. Schoelzel.

Third Row: B. Waldhart, A. Dins, W. Remus, D. Rein, W. Bauer, A. Singstock, V. Schultz, D. Oehmichen, A. Brill, P. Reeves, M. Klappert, L. Weix, V. Buettner, D. Brunner.

Second Row: G. Olson, J. Schantini, A. Podevels, D. Firnstahl, A. Leu, C. Herrmann, M. Farning, I. Langjahr, M. Hoffman, M. Sazama, B. Berg.

Front Row: D. Primeau, A. Nosbish, J. Gutenberger, E. Mossing, G. Vrana, E. Schumacher, G. Keller, G. Schuster, E. Jewett, D. Langjahr, F. Mabbott, M. Ewert, R. Schillinger, V. Voelker, E. Kunze, J. Erdman.

CLASS HISTORY

They're off to a flying start in high school life, and this year freshmen have accomplished a lot already. They walked through the Colby High School doors with a determination to make good, and they are doing just that.

These fifty-nine freshmen were quick to catch on and their first move was to place all their business in the hands of Audrey Singstock, Don Primeau, Gloriette Olson, and Erma Schumacher.

They were given a real introduction into high school by the sophomores but they were

good sports and the black noses, different socks and shoes, and green ribbons didn't phase them a bit. The green ribbons on initiation day were a bit deceiving as they're not green, just a little tinted!

The freshmen this year are exceptionally active in extra curricular activities and by the time they're seniors they'll have everyone sitting up and taking notice of their achievements.

The freshmen have the capable assistance of their class advisor, Miss Ludwig.



Senior History



Home Ec



Occasionally
We do
Study



Juniors



Hard at Work.



Ambitious

ACTIVITIES



M. Haber-

ANNUAL STAFF



ANNUAL STAFF (Before)

Second Row: O. Rex, Miss Carver, D. Frane, M. Hake, H. Barr, E. Andrew, N. Wolf, L. Baumgartner, R. Hemmy.

First Row: B. Thorson, W. Smudde, D. Elstrom, E. Gutenberger, M. Schultz, I. Brehm.



ANNUAL STAFF (After)

Second Row: Miss Carver, D. Frane, M. Hake, H. Barr, R. Hemmy, E. Andrew, N. Wolf, L. Baumgartner, O. Rex.

First Row: B. Thorson, W. Smudde, D. Elstrom, E. Gutenberger, M. Schultz, I. Brehm.

"In The Process"



MUSIC DEPARTMENT



SENIOR BAND

Fourth Row: R. Nelson, R. Tesmer, P. Firnstahl, M. Beyerl, C. Brehm, O. Rex, D. Firnstahl, Miss Carver.
Third Row: B. Bauer, E. Mossing, V. Kasper, J. Sazama, A. Gries, M. Neuman, I. Brehm, R. Hemmy, G. Olson, B. Stoltzman, L. Frome.
Second Row: E. Prien, S. Brehm, D. Schulz, M. Prien, A. Nosbisch, E. Schumacher, H. Gosse, D. Young, M. Hake, M. Keller.
Front Row: V. Koleske, R. Ebert, M. Casey, D. Will, E. Johnson, M. Schmidt, A. Syring, E. Schulz.





PEP BAND

Second Row: E. Prien, O. Rex, S. Brehm, D. Young, M. Beyerl, M. Keller, G. Olson,
Miss Carver, L. Frome.

First Row: A. Syring, V. Koleske, R. Ebert, W. Bauer, I. Brehm, M. Neuman



JUNIOR BAND

Second Row: Miss Carver, A. Nosbisch, E. Schumacher, H. Gosse, I. Langjahr, M.
Hoffman, M. Beyerl, V. Kozik, P. Weix, B. Stoltzman, P. Youmanns.

First Row: V. Voelker, E. Kunze, P. Reeves, H. Rankel, H. Hoernke, M. Farning,
D. Brunner, F. Youmanns.

MUSIC DEPARTMENT

If anyone were to enter Colby Hi during the "activity period" they could readily tell from the "toots" from the Band Room and the "sweet-sour" notes of the Choir that our school is music minded.

The instrumental department conducted by Miss Carver includes The Senior Band, The Junior Band, and The Pep Band. The Senior Band is composed of students who have reached a certain proficiency on their respective instruments. In most cases that proficiency was gained in Junior Band. The Junior Band consists of grade school students and high school freshman under the student direction of Betty Stoltzman. The Pep Band is that small group of enthusiastic musicians who make an appearance at basketball games and try to entertain the public.

The vocal department under the direction of Miss Ludwig and Mr. Bender is divided into the Folk-Singers, the Choir, and the Girl's Glee Club. The Folk-Singers is a small group of music lovers, who are characterized by the type of songs they sing. The vocal department would not be complete without some mention of the Choir. It is a mixed group which sings both a capella and with accompaniment. Girls who are especially interested in exercising and straining their vocal chords are members of the Girl's Glee Club. The accompanist for the vocal groups is Earl Brockhaus.

During the year the music department gives formal concerts as well as impromptu appearances. The three outstanding events of the year are the Carnival the Christmas Concert, and the Spring Concert.





FOLK SINGERS

Third Row: Mr. Bender, O. Rex, A. Sterzinger, P. Firnstahl, R. Tesmer, H. Rankel.
 Second Row: J. Sixel, E. Prien, D. Schulz, T. Thorson, D. Van Dreel, C. Brehm, M. Beyerl.
 First Row; E. Gutenbergger, M. Hake, P. Sossaman, A. Syring, G. Olson, R. Reeves, M. Klappert, M. Schultz.



CHORUS

Fourth Row: P. Firnstahl, R. Tesmer, C. Priem, D. Frane, F. Klappert, C. Brehm, N. Sill, A. Sterzinger, W. Apfelbeck, E. Prien, D. Schulz, M. Prien.
 Third Row: E. Kellner, M. Young, R. Stoltzman, V. Kasper, A. Gries, M. Neuman, O. Rex, T. Fristad, A. Dins, A. Brill, E. Brockhaus, E. Wehrman.
 Second Row: Miss Ludwig, M. Hake, E. Gutenbergger, E. Schulz, P. Sossaman, T. Thorson, A. Calbaum, C. Cosgrove, M. Schultz, B. Thorson, S. Brehm.
 First Row: J. Sixel, L. Frome, A. Sachse, A. Syring, I. Beawer, J. Sazama, D. Becken, M. Keller, D. Van Dreel, E. Neuhaus, E. Fechhelm, M. Fricke.



GIRLS' GLEE CLUB

Third Row: M. Hake, A. Sachse, A. Singstock, G. Olson, M. Farning, Miss Ludwig, A. Brill, B. Stoltzman, D. Oehmichen, M. Schultz, H. Rankel.
 Second Row: M. Schmidt, V. Schultz, D. Diedrich, L. Frome, A. Gries, D. Brunner, A. Nosbisch, H. Brehm, I. Langjahr, P. Reeves, L. Rankel, M. Klappert.
 First Row: M. Young, E. Schulz, J. Sazama, E. Schumacher, M. Fricke, A. Leu, G. Keller, D. Firnstahl, M. Keller, E. Fechhelm, L. Baumgartner, J. Blanchard, S. Brehm.



CHEER LEADERS

E. Schulz, L. Gieger, E. Johnson, D. Firnstahl, A. Gries.



"A" TEAM

Second Row: R. Gierl, G. Schmidt, R. Nelson, J. Hauser, W. Schneider, C. Priem,
Mr. Kalina, Coach.

First Row: H. Barr, N. Wolf, W. Birkett, P. Firnstahl, C. Reise.



"B" TEAM

Second Row: M. Prien, W. Bauer, M. Case, R. Voelker, Mr. Kalina.

First Row: D. Birkett, A. Gries, J. Hauser, J. Schantini, R. Gierl.

SPORTS

The Sports Department has been very active the past year. It played baseball last spring, football and softball this fall, and had a very successful basketball season culminating in the tournament at Athens in the latter part of February.

The baseball team played Abby twice and won both times, and also trimmed Unity twice but in the three-way play-off Abbotsford won and Colby took second with Unity in the low spot.

Football was played but not in interschool competition. We could have had a very good team, but because of the lack of equipment we were not allowed to compete with other schools. There were a few casualties. Howard Barr

sprained his leg and had to stop playing, and "Potski" got a couple of teeth knocked out in a crashup with Don Primeau.

Softball was also played and mock-games between impromptu teams of the physical education class were played and Coach "spotted" for his future baseball team of next spring.

Basketball is the favorite sport of Colby High, not only from the participant's viewpoint, but from the enthusiastic response of the spectators. Among the members of our basketball team who will be greatly missed next year will be: Howard Barr, Wayne Birkett, Wilbur Gierl, Norbert Wolf, Charlie Riese, and Walter Schneider.

The coach of the Athletic Department is Mr. Kalina.





INTER NOS

Second Row: C. Brehm, Miss Heglund, D. Schulz, O. Rex, E. Schulz, R. Beyerl, M. Schmidt, M. Neuman, V. Fristad, I. Buettner, P. Firnstahl.

First Row: J. Sixel, E. Gutenberger, L. Baumgartner, D. Elstrom, M. Keller, E. Andrew.

During the last period on Tuesdays, there is always a mad buzzing in the typing room. Members of the Inter-Nos staff are rushing to and fro, writing, scratching out again, and inserting new phrases.-----As you can no doubt know, they are doing last minute work on the weekly school paper. Finally, the last checking and rechecking is over and the finished product is sent to Miss Heglund for approval.

Thursday noon is when the Colby Phonograph is published and every kid in

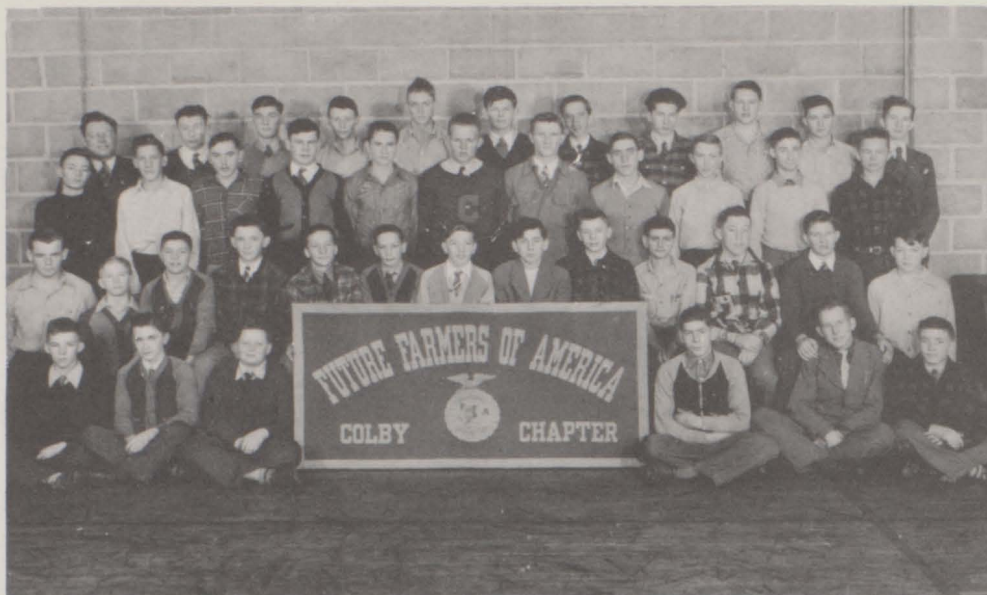
school is anxious to see the gossip column, the main attraction of the paper. Many are the oh's and ah's which arise from the throats of those whose names appear in the column.

Among the other things which appear in

the Inter-Nos are editorials, reports of the class doings, personals, biographies, sports, and other features.

Nevertheless, members of the staff do have their fun, even though it is a mad rush in getting the paper published.





F.F.A.

Fourth Row: Mr. Pynnonen, H. Hoernke, O. Rex, W. Apfelbeck, W. Smudde, F. Klappert, F. Beyerl, W. Hamann, J. Hauser, E. Schilling, A. Sterzinger.
 Third Row: A. Brill, L. Kunze, J. Allar, G. Kobs, G. Schmidt, W. Birkett, P. Firnstahl, C. Reise, G. Smudde, V. Kasper, D. Birkett.
 Second Row: J. Reel, W. Remus, J. Gutenberger, C. Herrmann, W. Sterzinger, R. Schillinger, E. Wehrman, W. Waldhart, E. Forbish, J. Schoelzel, D. Primeau, M. Prien, M. Cendt.
 First Row: G. Schuster, M. Ewert, A. Podevels, T. Fristad, M. Case, M. Brill.



F.F.A. BASKETBALL

First Row: C. Reise, P. Firnstahl, W. Smudde, G. Kobs, W. Apfelbeck, A. Sterzinger, M. Case, D. Birkett, L. Kunze, M. Prien, D. Primeau, M. Cendt, W. Waldhart, J. Gutenberger.

FUTURE FARMERS

Twenty chapter farmers and twenty-four green hands were "on deck" for the first F.F.A. meeting of the year.

The group was led by president George Schmidt, vice-president Wayne Birkett, secretary Wilbert Smudde, treasurer Charles Reise, reporter Paul Firnstahl, and sentinel Billy Apfelbeck.

During one of our regular meetings when our advisor, Mr. Pynnonen was asked why he was stationed by owl, he replied, "The owl is wise and so am I, I think! Being older than the rest of you, do what I tell you."

As a part of the seasons activities softball and basketball games were played. The softball games were played with Abbotsford. In the basketball

conference the following cities were represented: Colby, Abbotsford, Marshfield, Greenwood, Rib Lake, and Medford. Our team consisted of Wilbert Smudde, Milton Prien, Donald Birkett, Melvin Case, Billy Waldhart, Ambrose Sterzinger, Gerald Kops, Malcolm Cendt, Jim Gutenberg, and Lawrence Kunze.

Beginning this year the Northwest Distributing Company is awarding a gold

watch to the outstanding junior-senior ag. boy. The qualifications for this award are based on the boy's project for the year, leadership, and scholarship.

A series of radio programs on farm improvement was presented over station WIGM at Medford.





F.H.A.

Fourth Row: A Syring, V. Schultz, M. Treankler, V. Syring, E. Feckhelm, M. Young, F. Mabott, A. Nosbisch, D. Will, M. Casey, V. Voelker, M. Wolff, V. Fristad.

Third Row: I. Brehm, A. Calbaum, S. Brehm, A. Gries, D. Firnstahl, M. Beyerl, M. Schultz, M. Farning, M. Neuman, D. Young, J. Sixel, I. Buettner, L. Frome.

Second Row: Mrs. Wernzenski, M. Hake, D. Brunner, A. Sachse, M. Schmidt, J. Blanchard, M. Fricke, E. Gutenberger, B. Rex, E. Kunze, J. Erdman, V. Buettner, A. Mielke, A. Singstock.

First Row: A. Brill, B. Stoltzman, J. Sazama, D. Van Dreel, L. Baumgartner, M. Keller, E. Andrew, D. Elstrom, P. Sossaman, G. Olson, L. Giese, M. Klappert, D. Oehmichen.

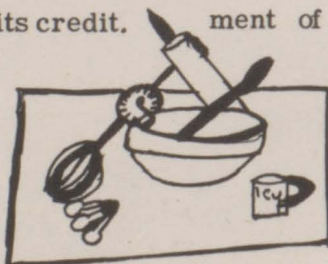
This year has been one of the most prosperous for the Future Homemakers of America of Colby High. During our first meeting of the year we elected Evelyn Andrew as president, Donna Van Dreel as vice-president, Marcella Keller as secretary, and Doris Elstrom as treasurer to take care of all the business of the organization. Lucille Baumgartner was appointed as the reporter for the paper.

In the course of the year, the F.H.A. has acquired many achievements to its credit. Their first undertaking was to feed the crowds at the carnival last fall. Our next project was to sew for the Russian War Relief. The home economics

girls completed twelve skirts and twelve children's nightgowns. It took a lot of prodding on the part of Mrs. Wernzenski but they were finally finished and sent right after Christmas.

The joint initiation with the F.F.A. was loads of fun and it was really a gala night for those being initiated, all those black noses, thirsty people, and romantic boys were a sight to behold.

Our final stroke towards the improvement of the school was to redecorate the dressing room and the room adjoining the home ec. room. They are now the "pride and joy" of all the girls.





ONE ACT PLAY CAST

Second Row: R. Tesmer, P. Firnstahl, J. Hauser, O. Rex, D. Schulz.
First Row: L. Thorson, Miss Heglund, F. Klappert.

A successful forensic season was experienced at Colby High School this year. If upon entering certain rooms during February and March, certain ambitious students are found busily declaiming to empty chairs, it is only to make the most of their golden opportunities. Diligent practice brings success is shown by the students who received high ratings at the forensic contests.

Miss Heglund coached forensics, as-

sisted by Mrs. Mason and Miss Ludwig. Students were given opportunity this year to participate in humorous declamation, serious declamation, oratory, extemporaneous reading, and extemporaneous speaking. Winners who received A ratings for 1945 were Mary Becker, serious declamation; Betty Jean Bender, extemporaneous reading; and Ronald Nelson, oration.



BOYS BASEBALL TEAM

Second Row: R. Gierl, R. Frome, P. Firnstahl, W. Birkett, G. Schmidt, C. Priem, R. Beyerl.

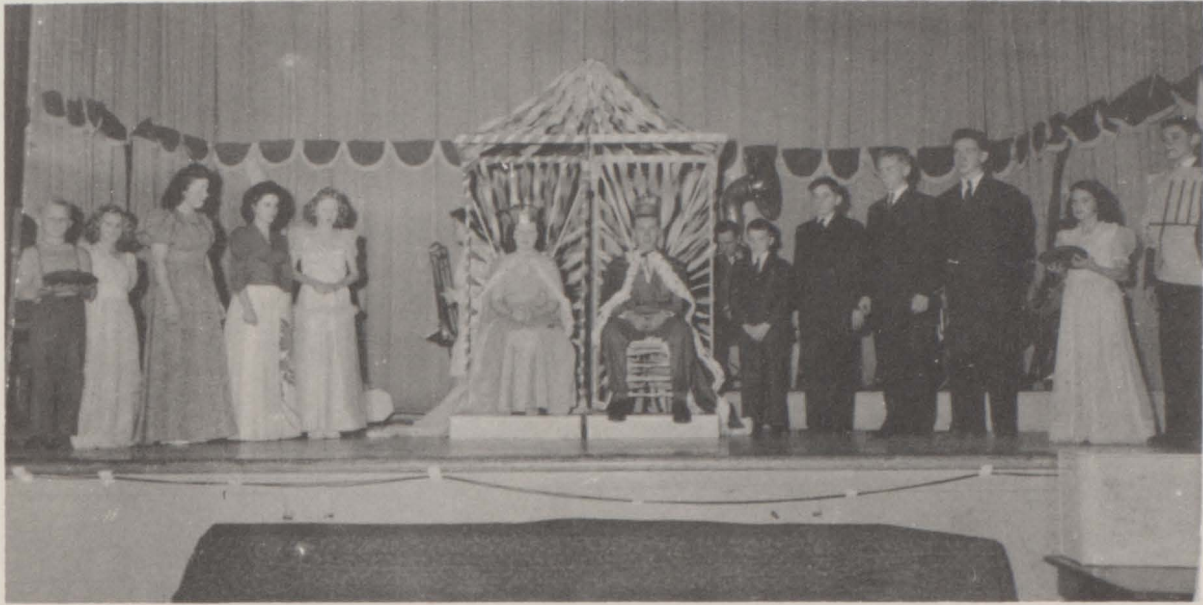
First Row: A. Gries, H. Barr, W. Gierl, E. Prien, N. Wolf, M. Prien.



KEEPER OF OUR SCHOOL

Bill, the janitor is a permanent character around school, and always has a "Hi" for us. He is general handyman, always sweeping, cleaning, dusting, and washing boards. If you want a door opened or an errand run, just call on Bill. He'll be glad to do it for you.

"Carnival"



"S
e
n
i
o
r

B

a

L

L "





Flints



Freshmen



Norman K



Blah! Blah!



Three Stooges



Chuck



Seniors



Main Room



Casey



"Irene"



John Deon



Blonde

HALL OF FAME

Best Boy Athlete - - - - -	Wilbur Gierl
Best Girl Athlete - - - - -	Bernelda Thorson
Day Dreamers - - - - -	Senior Class
Liking to Argue - - - - -	Howard Barr
Un-Ambitious - - - - -	Eileen Gutenberger
Best Boy Musician - - - - -	Toby Tesmer
Best Girl Musician - - - - -	Marcella Keller
Neatest Boy - - - - -	Bob Ebert
Neatest Girl - - - - -	Evelyn Andrew
Best Pals - - - - -	Ebert & Hemmy
Most Generous - - - - -	Billy Apfelbeck
Most Cooperative - - - - -	Bill Bauer, Sr.
Most Friendly - - - - -	Billy Waldhart
Favorite Sport - - - - -	Basketball
Most Studious Girl - - - - -	Lucille Baumgartner
Most Studious Boy - - - - -	Don Schulz
Wide-awake Student - - - - -	Is there any?
Sleepiest Boy - - - - -	Wilbur Gierl
Sleepiest Girl - - - - -	Marie Hake
Flirtatious Boy - - - - -	Wilbert Smudde
Flirtatious Girl - - - - -	Mae Beyerl
Champion Gum Chewer - - - - -	Doris Schoelzel
Confirmed Giggle - - - - -	Margy Young
Talkative Person - - - - -	Bob Hemmy
Shiest Boy - - - - -	Wilbert Remus
Shiest Girl - - - - -	Joyce Erdmann
Dimples - - - - -	Maxine Farning
New Hair Styles - - - - -	Phyllis Scheel
Smile For Everyone - - - - -	Miss Carver
Entertaining the Girls - - - - -	Orville Rex
Wierd Noises - - - - -	Ambrose Sterzinger



1-2-3 Hop



Jack S.



Rear View



Pals



Faculty Picnic



Mazie



Ump! Pak!



Bernie and Elaine



"Dot"



Iris and Shirley



Mae Fricke



Jean Blanchard



Jim and Eileen



Mary and Doris



Betty Stoltzman



Maxine F.



Alvina



Jim G.



Anlyle Sehse



Howie Bann



Carl P.



Marcia Schmidt



Guess Who?



Mae Beyrl



Billy Waldhant



Paulie



Jenny Schoelzel



Donthy Y.



Marjorie Y



Nica Dog



Eileen + Slim



Arlene S.



Irma



Potskie



Shirley B.



Donis and Mary



Carl P.



Doris Elstnom



Lennice F.

THINGS 'N STUFF

Remember when-----

There were enough men in chorus.
Eugene didn't go with Darlene.
Lucille Baumgartner didn't know an answer.
Wilbur didn't go to sleep in English class.
Kids went to the library to study.

Heard tell-----

• "What's that gurgling noise?"

"It's me trying to swallow your line."

* * * * *

"Next to a beautiful girl, what do you consider
the most interesting thing in the world?"

"When I'm next to a beautiful girl, I don't bother
with statistics."

* * * * *

Can you imagine-----

Thorwald in a harem?
Don P. not wolfing?
Freddie without his smile?
Norbert W. jitterbugging?
Miss Ludwig swooning?
A meeting of the entire staff?

* * * * *

Perhaps you think our jokes are bad
But you'd quickly change your views:
If you'd compare the jokes we print
With those we couldn't use.



Greenhorns



Art



Art and his pigs



Cute ?



"Red"



Girls Basketball



Impossible



Marie



SENIOR ACTIVITIES

EVELYN ANDREW -- Inter Nos Staff 3-4, Annual Staff 4, F.H.A. Pres. 4, Candidate for carnival 3, Oration 2, Prom queen 3, Senior ball queen 4, Vice-president of the class 3.

HOWARD BARR -- Basketball 1-2-3-4, Baseball 3-4, Football 2, Softball 1-3, Track 2, Volleyball 2, President of class 4, Candidate for carnival 3, Senior ball king 4, Annual Staff 4.

JACINTA BECKEN --

ROBERT BEYERL -- Inter Nos Staff 2-3, Baseball 3, Softball 3, Football 2, Volleyball 2.

WAYNE BIRKETT -- Basketball 1-2-3-4, Volleyball 2, Softball 1-3, Football 2, Track 1-2, Baseball 3-4, F.F.A. 1-2-3-4, F.F.A. Vice-president 4, F.F.A. Basketball 3.

IRIS BREHM -- Chorus 2-3-4, Girls Glee Club 1-4, Band 1-2-3-4, F.H.A. 2-3-4, Annual Staff 4, Pep Band 4, Class Vice-President 4.

ROBERT EBERT -- Chorus 1-3, Band 1-2-3-4, F.F.A. 1, Pep Band 3, Carnival King 4, Class President 2, Class Treasurer 4.

DORIS ELSTROM -- F.H.A. Vice-President 1, Treasurer 3, Band 1, F.H.A. Treas. 4, Inter Nos Staff 2-3-4, Annual Staff 4, Serious Declamation 2.

DAVID FRANE -- Chorus 2-4, Boys Glee Club 2, One Act Play 1, Annual Staff 4, Sec.-Treas. 2, Basketball 1-2.

MAE FRICKE -- Girls Glee Club 1-2-4, Chorus 3-4, F.H.A. 2-3-4, Girls Basketball 2, Secretary 3, Carnival Queen 2.

THORWALD FRISTAD -- Chorus 3-4, F.F.A. 1-2-3-4.

WILBUR GIERL -- Basketball 1-2-3-4, Volleyball 2, Baseball 3-4, Softball 2-3, Football 3, Track 1.

EILEEN GUTENBERGER -- Girls Glee Club 1-2, Chorus 2-4, Inter Nos 2-3-4, Annual Staff 4, F.H.A. 2-3-4, Madrigals 4, Girls Softball 1.

MARIE HAKE -- Chorus 2-3-4, Girls Glee Club 1-4, Band 1-2-3-4, Declamation 1-2-3-4, Annual Staff 4, Madrigal 2-4, Secretary of Class 1, F.H.A. 2-3-4.

ROBERT HEMMY -- Band 1-2-3-4, Inter Nos 2-3, Annual Staff 3-4, Basketball, Class president 1, Carnival candidate, Prom King 3.

IRMA HOERNKE -- Carnival candidate 4.

CARL PRIEM -- Chorus 1-4, Track 1, Baseball 3-4, Basketball 4, Softball 3, Football 1.

EUGENE PRIEN -- Chorus 2-3-4, Boys Glee Club 2, Band 1-2-3-4, Inter-Nos 2-3, Madrigals 4, Pep Band 1-2-3-4, Baseball 3-4, Softball 2-3, Class officer 3, Carnival King 2, Volleyball 2-

CHARLES RIESE -- F.F.A. 2-3-4, F.F.A. Treas. 4, Softball 2-3, Volleyball 2, Track 2-4, Softball 4.

ORVILLE REX -- Chorus 1-2-3-4, Boys Glee Club 2, Band 3-4, One Act Play 4, Inter Nos 1-4, Annual staff 4, F.F.A. 1-2-4, Madrigals 1-4, Pep Band 4.

DORIS SCHOELZEL -- Declamation 2-4, Girls Softball 1-3.

GEORGE SCHMIDT -- F.F.A. 2-3-4, F.F.A. Vice Pres. 3, Basketball 4, Baseball 3-4.
Softball 1-3, Volleyball 2, Track 1-2, F.F.A. Softball 4, F.F.A. Pres. 4.

WALTER SCHNEIDER -- Chorus 1-3, Basketball 2-4, Softball 3, Volleyball 2.

MARCIA SCHULTZ -- Chorus 4, Girls Glee Club 1-2-4, Declamation 2, Inter Nos 3,
Annual Staff 4, F.H.A. 2-3-4, Madrigal 4, Girls Softball 1-2, Girls Basketball 2-3,
Secretary of class 4.

WILBERT SMUDDE -- Annual Staff 4, F.F.A. 1-2-3-4, Volleyball 2, Softball 2-3, F.F.A.
Basketball 3-4, F.F.A. Secretary 4.

AMBROSE STERZINGER -- Chorus 3-4, F.F.A. 1-2-3-4, Madrigals 4, Baseball 3, F.F.A.
Basketball 4, F.F.A. Softball 4, Track 1.

BERNELDA THORSON -- Chorus 3-4, Girls Glee Club 1-2, Declamation 2, Plays 2,
Annual Staff 4, Basketball 2-3, Softball 1-2.

NORBERT WOLF -- Annual Staff 4, Basketball 1-2-3-4, Baseball 3-4, Track 1-2, Softball
1-3, Football 2, Volleyball 2.

MARJORIE YOUNG -- Chorus 4, Girls Glee Club 1-2-4, Declamation 2, F.H.A. 2-3-4,
Girls Basketball 2-3-4, Girls Softball 1-2.

FEED

NORTHWEST


FEED

GORDON T. VORLAND

Attorney at Law

COMPLIMENTS
OF
SOME FRIENDS

H. H.

There's a  in your future

MOTOR

C O.

ZILLMERS

An old store in years of service, but forever thoughtfull to remain young in the selection of clothes for the Hi School student, or the College Grad, be it a suit of clothes, furnishing, footwear or a prom dress, you can always do well at

A. J. Zillmer and Co.

COMPLIMENTS OF

LOOS

MACHINE

SHOP

OLDSMOBILE

PYROFAX

MAKE THE MAGIC CHEF
THE HEART OF YOUR
NEW GAS KITCHEN

KREPSKY & NECK

Phone 7

O+N LUMBER CO.

COAL

LUMBER

INSULATING

CEMENT

TILE

COLBY, WIS.

COMPLIMENTS
OF
EQUITY CO-OP
SHIPPING ASSN.

COLBY

COLBY
MEDICAL
ASSN.

A. L. SCHEMMER M.D.

H. H. CHRISTOFFERSON M.D.

KRIPLEAN BROS.
LTD.

BUICK CARS - G.M.C. TRUCKS

SALES & SERVICE

TEL. 126

COLBY, WIS

STIEBER
HARDWARE

PLUMBING & HEATING

TIN & FURNACE WORK

TOOLS & CUTLERY

PHONE 2

COLBY



FLEISCHAUER'S MEN'S STORE

CLOTHING
FURNISHINGS
TAILORING
SHOES

Finest of Meats & Groceries

CLOVER

FARM

Phone 50

STORE

COMPLIMENTS OF

GAMBLE STORE

Authorized Dealer - ED WITTE

COLBY

COLBY

DRUG

STORE

Big "W" Service

N. R. GIERL PROP.

Agent For

STATE FARM MUTUAL INS.

COMPLIMENTS OF

HARMONY

CO-OP

COLBY, WIS

COLBY
BEAUTY
SHOP

Pearl Vorland - Mgr.

COMPLIMENTS OF
MIDGET CITY MEAT
MARKET

BAND INSTRUMENTS
AND SUPPLIES

SOLD

BY

F. W. LULLOFF

FURNITURE

COLBY

COMPLIMENTS
OF

SECURITY STATE
BANK

COLBY

ABBOTSFORD

FIRNSTAHL

IGA FOOD MARKET

QUALITY
MEATS AND GROCERIES

Free deliveries

Phone 29W

TEDS SERVICE
STATION

COMPLIMENTS
OF
MUELLER'S
RESTURANT
WADHAMS
LES SUPER SERVICE

Let Our Experts Service
Your Car

BOOSTER LIST

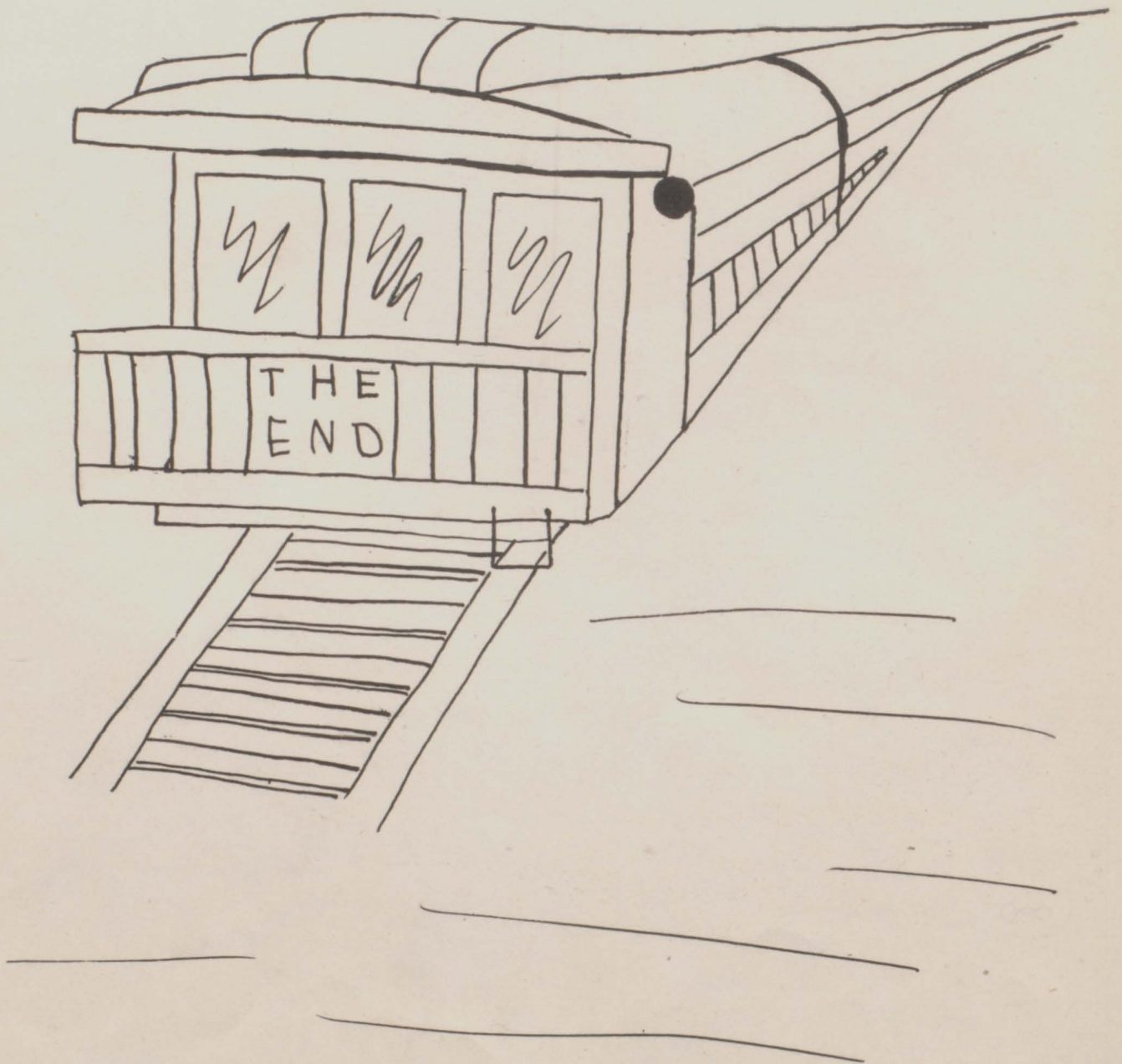
Sabler Grocery	\$1.00
H. J. Walsch	1.00
Hause Banben Shop	1.50
Reeves Banben Shop	1.50

Our Advertisers

We wish to express our sincere appreciation to the business men of this community for the splendid way they have cooperated to the advertising section of this annual and also for the courteous and considerate attitude they always extended to the students of the High School.

Business Managers

Robert Blumley
Howard Barr



M. Haber



