



I pledge allegiance to the flag of the United States
of America and to the Republic for which it stands,
one Nation indivisible, with liberty and justice for all”

THE EAU PLEINE
VOLUME 8-----1945



EDITED BY THE CLASS OF '45
COLBY HIGH SCHOOL
COLBY, WISCONSIN



ANNUAL STAFF

Sitting: L. Miller, M. Rucks, R. Thorson, K. Engeldinger, M. Becker, D. Primeau, G. Scheel.
 Standing: M. Dallman, J. Marsh, Mr. Bender, B. Bender, R. Hemmy, N. Anderson, D. Borchert,
 D. Elstrom.

Annual Staff

EDITOR-IN-CHIEF	KENNETH ENGELDINGER
ASSISTANT EDITOR	MARY BECKER
JUNIOR ASSISTANT EDITOR	DORIS ELSTROM
ADVISOR	MR. BENDER
BUSINESS MANAGER	ROY THORSON
JUNIOR ASSISTANT BUSINESS MANAGER	ROBERT HEMMY
TYPISTS	LORRAINE MILLER
	DEVERE PRIMEAU
	MARGARET RUCKS
ARTISTS	JOAN MARSH
	MARIAN DALLMAN
SUBSCRIPTION MANAGER	DONALD BORCHERT
SNAPSHOTS	BETTY JEAN BENDER
	GRACE SCHEEL
	NORA ANDERSON



*Our School
Board of Education*



Dr. H. H. Christofferson
President



E. W. Schultz
Treasurer



O. H. Heintz
Clerk

Dedication



Miss Ruth Panzenhagen



Eugene Lehrman



Ralph Abrahamson



Edwin C. Klassy

In appreciation of their years of effort to maintain the standards of our school, their willing and patriotic service, we, the Seniors of '45, dedicate this issue of the Eau Pleine to our former teachers who are now in the Armed Forces.



Miss Maxine Lindstrom

In Memoriam



Bill Keppel, our coach and instructor in science during the school years of 1940-42. He volunteered to serve his country in the Naval Reserve and was called to duty at the close of the school year 1942. After receiving his training and his commission as an Ensign, he was assigned to a U. S. Destroyer and served his country in active duty on the high seas until he made the supreme sacrifice when he went down with his ship during a hurricane while on convoy duty in September, 1944.

"Coach" was associated with Colby Hi only a comparatively short time, but he left a host of friends among his students, fellow teachers, and the people in this community. He gave freely of his time and energy and was ever ready and willing to help.

An outstanding teacher has left our midst never to return. He gave his all to his country that we might continue our democratic way of life. Those of us who knew him will treasure the memory of Bill Keppel.



Bill, Sr.

*Keepers of
Our School*



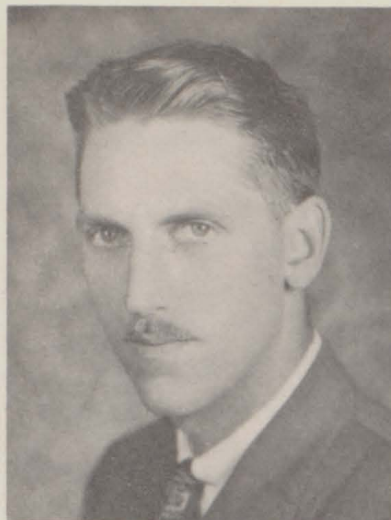
Bill, Jr.



FACULTY



Mrs. Dorothy Wernzenski
Home Economics



Frederick W. Bushman
Science's
Physical Education
Mathematics



Mrs. Seneth Durkin
English
Library
Forensics



W. Harry Bender
Principal
Mathematics
Vocal Music



Mrs. Alice Tweit
Commercial
Civics

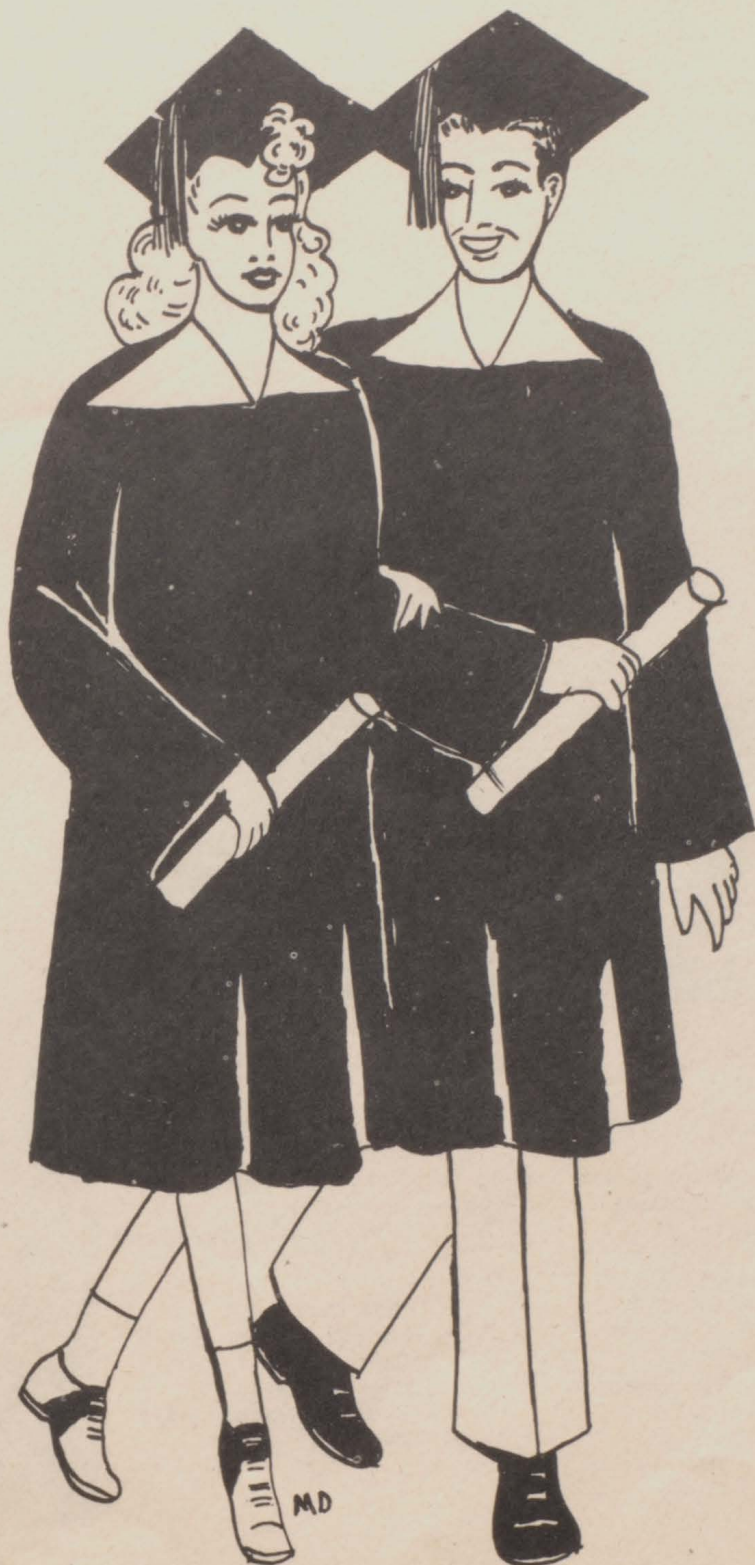


William M. Jackson
Agriculture



Patricia Carver
History
Music

Seniors





NORA ANDERSON "Andy" MADELINE BARTS "Mickey"

"The teachers think that she's so sweet, they let her sit in the front seat."

Glee Club 1-2
Chorus 1
Humorous Declam. 1-4
Girls' Basketball 2-4
Twirling 2-3-4
Inter-Nos 4
Carnival Candidate 2
Cheerleader 3
Annual Staff 4
F.H.A. 2

"She has no heart--'he' has it."

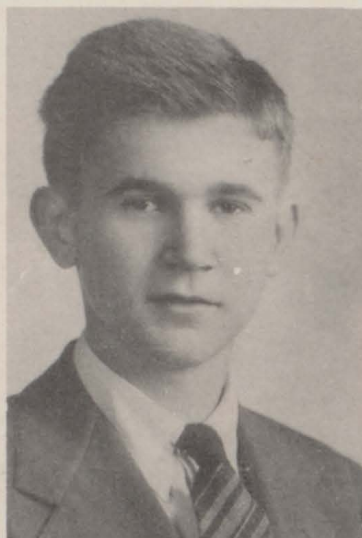
Band 1-2-3-4
Glee Club 4
Chorus 3
Twirling 3-4
Madrigals 3-4
Pep Band 4



DOLORES BARR "Barrsie"

"Why gentlemen prefer blondes, isn't hard to explain."

Band 1-2-3-4
Treasurer 1
F.H.A. 2-3-4
Girls' Basketball 4



ALBERT BAUER "Slats"

"A careful student-- careful not to overdue."

Chorus 1-2-3-4
Band 1-2-3-4
Basketball 1-2-3-4
Softball 2-3-4
Track 1-3-4
Boys' Glee Club 3
Orchestra 4



ERMA BARTS

"Good things are done up in small packages, for instance, me."

Band 1
Twirling 3-4
Glee Club 3-4
Chorus 3
Carnival Queen 4
Madrigal 4
F.H.A. 1-2

MARJORIE BEAVER

"Midgee"

"To be efficient in a quiet way, That is my aim throughout the day."

Glee Club 1-2
Serious Declam. 2-3-4
Chorus 4
Inter-Nos 3-4
Extemp. Reading 1-2-3
Debate 1





MARY BECKER "Becky"

"Over the shiny typewriter
keys, Her fingers fly with
greatest ease."

Humorous Declam. 1-2
Serious Declam. 1-2-3-4
Vice-President 2
One-Act Play 2-3-4
Band 1-2-3-4
Chorus 2-3-4
Glee Club 4
Madrigal 4
F.H.A. 1-2
Pep Band 1-2-3-4
Orchestra 2-3
Inter-Nos 2-3-4
Annual Staff 4

ELDA BOLDT

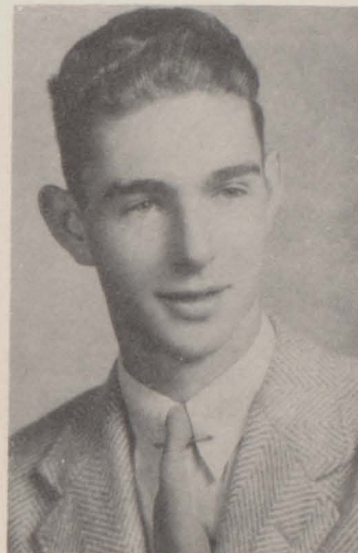
Glee Club 1-2-3-4
Band 3-4
F.H.A. 1-2-3-4
Girls' Basketball 4



BETTY JEAN BENDER
"Freck"

"Where there's a will
there is a way--I
say you can mix work
and play."

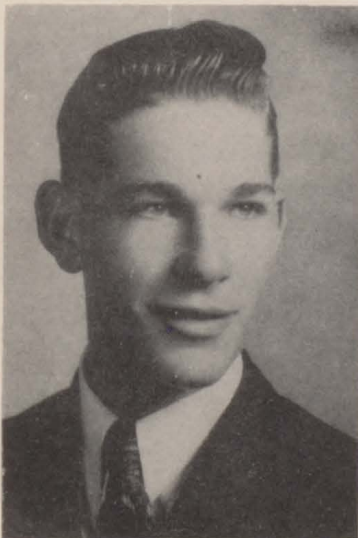
Band 1-2-3-4
Chorus 1-2-3-4
Glee Club 4
Madrigals 3-4
Serious Declam. 1-2-3-4
Humorous Declam. 1
One-Act Play 1-2-3-4
Extemp. Reading 3
Basketball 2-4
Pep Band 3-4
Treasurer 1
Inter-Nos 3-4
Annual Staff 4



DONALD BORCHERT "Smear"

"All he needs is a hook,
He's got a line--"

Band 1-2-3
F.F.A. 1-2-3
Chorus 2-3
Basketball 3-4
Baseball 1
Kittenball 3-4
Orchestra 2-4
Pep Band 2-3
President 3
Secretary 1
Carnival Candidate 1
Madrigal 3-4
Track 2
Glee Club 3
One-Act Play 3-4



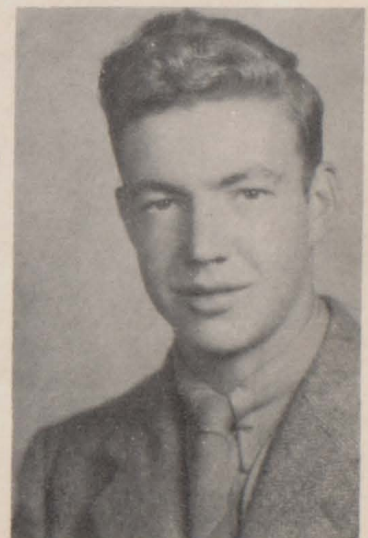
GERALD BEYERL "Jerry" JOHN BRILL "Johnny"

"Not so still and silent as
one would think."

F.F.A. 1-2-3
Chorus 1-2-3-4
Boys' Glee Club 3

"The tragic stage was
planned, Then the clown
walked in."

Band 1-2-3-4
Chorus 1-2-3-4
Boys' Glee Club 3
Carnival Candidate 3
F.F.A. 1-2-3-4
Orchestra 4
Madrigal 2-3-4





THERESA BRILL

"Others talk about it,
she does it."

Glee Club 1-2-3
Chorus 4
Serious Declam. 1-3
Class Treasurer 4
Inter-Nos Staff 4

VIRGINIA FEIND

"Not talk, but
thought."

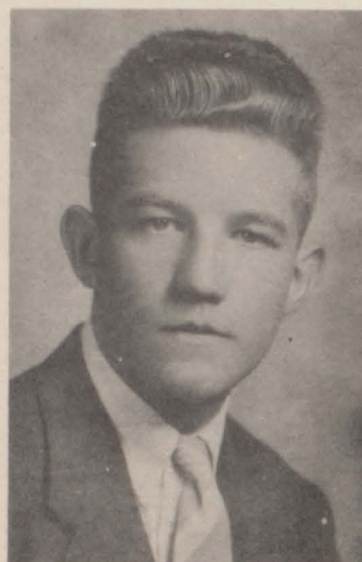


MARIAN DALLMAN

"Dimples"

"A good mixture of
sense and nonsense."

Band 1-2-3-4
F.H.A. 1
Annual Staff 4



MAYNARD FORSS "Pokey"

"Rest is more agreeable
than motion."

F.F.A. 1-2-3-4
Chorus 3-4
Madrigal 3
Boys' Glee Club



KENNETH ENGELDINGER

"Red"

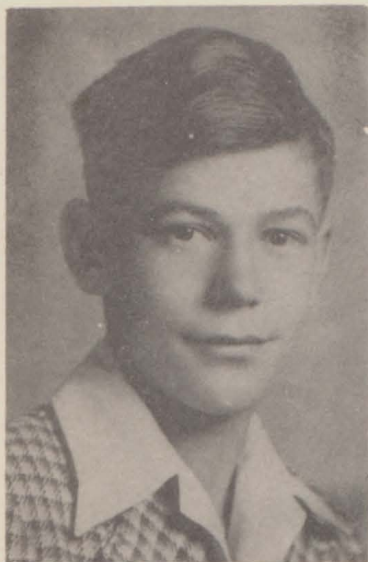
"His dry humor and his wit,
Would put any person in a
fit."

Band 1-2
Basketball 1-2-3
Carnival Candidate 3
Track 3
Softball 2-3-4
Football 3
Class President 1
Baseball 1
Annual Staff 4
Inter-Nos Staff 3

JANET FROME

"She's not a flower, she's
not a pearl; But she's a
good all around girl."





DONALD FRANE "Pee Wee" RONALD HAKE

"He says he's just a little speck, but girls do notice him, by heck."

F.F.A. 1-2-3
Chorus 2-3-4
Madrigal 3
Boys' Glee Club 3
Soft Ball 4
Basket Ball 4

"If this is life, give me death."

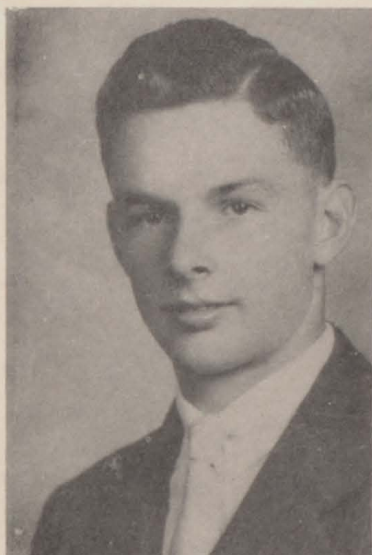
Band 1-2-3-4
F.F.A. 1-2-3-4
Vice-President 1
Orchestra 4
Pep Band 3-4
Deviltry 1-2-3-4



FRANK GOELTZ "Snort"

"A fine lad, wise from the top of his head up."

Basketball 1-2-3-4
Track 1-2-4
Softball 2-3-4
Football 3
Baseball 1



ARABELLA HAMANN

"Mild of manner and gentle of heart."

Band 1-2-3-4
Pep Band 4



MARION GOSSE

"She studies, yet she has time to play."

Glee Club 1-2-3-4
Chorus 3
F.H.A. 1-2

ELDOR HANSON

"Never do today what you can put off until tomorrow."

Band 1-2-3-4
F.F.A. 3-4
Chorus 4
Pep Band 4





WILLIAM HEUCKE "Bill" JOAN MARSH "Swampy"

"An individual easily, for
he is tall, lank, and
lean."

F.F.A. 2-3
Track 2

Band 1-2-3-4
Chorus 1-2-3-4
Glee Club 4
Carnival Candidate 3
One-Act Play 2
Girls' Basketball 4
Inter-Nos 4
Cheerleader 2-3-4
Twirling 1-2-3-4
Orchestra 1-2-3-4
Madrigal 1-2-3-4
Annual Staff 4
Forensics 1



AURELLA HOERNKE
"Rel"

"Why worry--might as
well smile, The world
won't end yet for a
while."

Band 2
Chorus 3
Glee Club 1-2-3



WINIFRED MARTENS "Boots"

"Quiet and unassuming."

F.H.A. 1-2-3-4



BETTY KRUEGER

"Forever quiet, boi-
sterous never,"

F.H.A. 1-2-3-4

DORENE MANDEL
"Cheesy"

"Those who from
studies flee,
Live long and
merrily."

Glee Club 1-2-3-4
Chorus 3-4
Madrigal 3-4





LORRAINE MILLER

"Larry"

"She's musical and all
the rest, Yes, such
a girl is truly blest."

Glee Club 1-2-3-4
Chorus 3-4
Madrigal 3-4
Annual Staff 4

DEVERE PRIMEAU

"The Colby girls are
good and sweet,
But I've another that
can't be beat."

Chorus 1-2-3-4
Pep Band 3-4
Madrigal 4
Band 2-3-4
Orchestra 3
Annual Staff 4
Boys' Glee Club 3



LAVILLA NEITZEL

"A girl of silence, a
girl of sense."

Glee Club 1
Band 2-3-4



IRENE RANKEL

"I don't say a lot, but I
do a lot of thinking."

Glee Club 1-2
Chorus 4



JEANETTE ORTH

"Jenny"

"So sweet the blush
of bashfulness."

F.H.A. 1-2-3-4
Chorus 2
Glee Club 1

MARCELLA REX

"A giggle is better
than a dozen
groans."

Glee Club 1-2-3-4
Chorus 3-4
Girls' Basketball 4





VILAS ROEWE

"A quiet man, but quite a man."

F.F.A. 3-4



ALICE SCHNEIDER

"Willabee"

"She's the giggles of the class."

Band 1-2-3-4

Chorus 3

MARGARET RUCKS

"Margy"

"As likable as she is inches tall."

Band 1

Glee Club 1-2-3-4

Chorus 3-4

F.H.A. 1-2-3-4

Class Officer 2-3

Madrigals 2-3-4

Girls' Basketball 1-2-4

Forensics 1

Inter-Nos 3-4

Annual Staff 4



DARLENE SCHOELZEL

"A very quiet lass----- at times."



GRACE SCHEEL

"Gracie"

"An innocent face, but you can never tell."

Glee Club 1-2-3

Twirling 2-3-4

Flag Swinging 4

Humorous Declam. 1-2-4

Girls' Basketball 1-2

F.H.A. 1-2-3

Carnival Candidate 1

Owen 3

Drum Major 3

Homecoming Queen 3

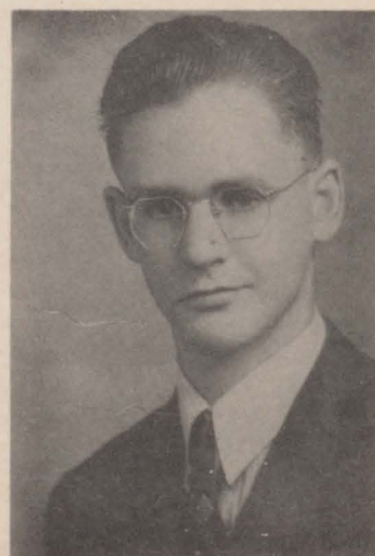
Inter-Nos Staff 3-4

Annual Staff 4

HERMAN SOSSAMAN

"A man need not be a lady's man to be a man."

Track 3





VIRGINIA STRATHMAN
"Strat"

"Full of fun and mischief too, doing things she shouldn't do."

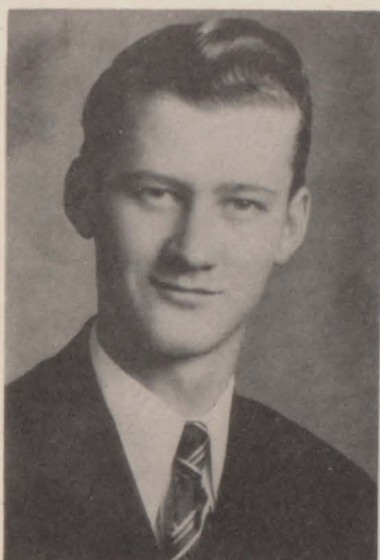
Glee Club 1-4
Chorus 2-3-4
F.H.A. 1-2-3-4
Madrigal 2-3-4
Cheerleader 3-4
Girls' Basketball 1-3-4
Forensics 1
Annual Staff 4



IRMA WEIX

"A true worker with quiet ways."

Glee Club 2



ROY THORSON
"Junior"

"Though vanquished, he argues still."

Band 1-3-4
Basketball 3-4
Class President 4
Carnival King 4
Orchestra 4
Annual Staff 4
One-Act Play 4
Football 3
Withee 2



DONALD WILL "Donnie"

"School is fine--from the outside."

F.F.A. 1-2-3-4
Boys' Glee Club 3
Chorus 3-4
Track 2-3



ELLEN VOIGHTLANDER

"Her ways are friendly to all ends, and a friendly way wins many friends."

F.H.A. 1-2-3-4

LILLIAN WURTHMAN

"She is witty, she is wise, she's a terror for her size."

Band 1-2-3-4
Chorus 3
Glee Club 4
F.H.A. 1-2-3-4
Orchestra 3-4
Pep Band 3-4
Madrigals 4
Cheer-leader 3
Forensics 1-2
Inter-Nos 3-4



Senior Class History

The largest class to enroll in Colby High School entered as freshmen on August 25, 1941. These sixty-six students elected as class officers: Kenneth Engeldinger, president; Roland Hake, vice-president; Donald Borchert, secretary. The Carnival King and Queen candidates were Donald Borchert and Grace Scheel. Our class advisor was Mr. Richard Allen, and upon his resignation, Miss Ruth Panzenhagen took over in that capacity.

The school year 1942-43 saw our class still the largest in Colby High with a membership of sixty-five. During the second year, the class was under the direction of Mrs. Makholm the first semester, and Mrs. Folstad the last half of the year. Officers were Emil Fleischauer, Jr., Mary Becker, Margaret Rucks, and Betty Jean Bender. Kenneth Engeldinger and Nora Anderson represented our class as Carnival candidates.

As juniors, Joan Marsh and John Brill were candidates for Carnival King and Queen. Class officers were Don Borchert, Delores Barr, and Margaret Rucks. The class had an informal prom on April 14, 1944, with "In the Blue of Evening" as the theme song. The membership numbered fifty-two during the junior year.

Supervised by Mrs. Durkin, the class of '45 elected Roy Thorson, president; John Brill, vice-president; and Lucille Schulz, secretary and treasurer during the first part of the year and Theresa Brill the remainder of the time. Success rewarded our efforts and Roy Thorson and Erma Barts reigned as King and Queen over the Carnival.

The students of this class have always readily participated in extra curricular activities taking part in forensics, music, and sports. We hope to go forth into this world having benefited from our high school days.

Marjorie Beawer

WILL Roland Hake ever quit studying?
WILL Alice Schneider and Aurella Hoernke ever cease to be friends?
WILL Roy Thorson continue to love himself?
WILL Ginny Strathman ever have to take reducing exercises?
WILL Dorene Mandel ever lose her nickname of "Cheesy"?
WILL Grace Scheel ever be a movie star?
WILL Don Borchert continue to be a "wolf"?
WILL Joan Marsh ever be without a man?
WILL Herman Sossaman ever take a girl to a dance?
WILL Dolores Barr always like the Army?
WILL Nora Anderson ever be a "farmer's wife"?
WILL Frank Goeltz continue to make his weekly trips to Marshfield?
WILL Irma Weix ever cease to enjoy the movies?
WILL Winifred Martin's blonde hair ever be without a hair ribbon?
WILL Gerald Beyerl ever be a "lady's man"?
WILL Marion Gosse ever measure six feet?
WILL Marcella Rex ever turn lazy?
WILL "Pokey" Forss ever give cause to change his nickname?
WILL Jeanette Orth be a professional bowler?
WILL LaVilla Neitzel ever be heard 'round the world?
WILL Donald Will will his name to anyone?
WILL Virginia Feind be the poet of our class?
WILL Erma ever be the "blond Barts girl" and Madeline the brunette?
WILL Ellen Voightlander ever be cross or without a ready smile?
WILL Vilas Roewe ever lose interest in agriculture?
WILL Darlene Schoelzel ever be a blonde?
WILL Irene Rankel ever be a boistrous girl?
WILL Theresa Brill ever by anything but a quiet, reserved student?
WILL Albert Bauer continue to love basketball more than girls?
(He said, "I doubt it!")
WILL Lorraine Miller continue to be our songstress?
WILL Betty Krueger lose interest in Elmer?
WILL DeVere Primeau ever forget that Milan is on the map?
WILL Marian Dallman ever lose her dimples?
WILL Elda Boldt get over her shyness?
WILL Arabella Hamann ever be seen with short fingernails?
WILL Bill Heucke ever wear short pants?
WILL Lillian Wurthmann ever tire of talking?
WILL Marjorie Beawer ever fail to have her lessons?
WILL Eldor Hanson ever have an intelligent look?
WILL Margaret Rucks ever be without Jim?
WILL John Brill miss the girls when school is out-----well, maybe one!
WILL Don Frane ever grow up?
WILL Betty Jean Bender be a "Professor Bender the Second"?
WILL Ken Engeldinger ever run out of witty remarks?
WILL Mary Becker make a certain doctor a good nurse?
WILL Janet Frome ever by anything but a redhead?
WILL the teachers ever run out of assignments-----I hope!

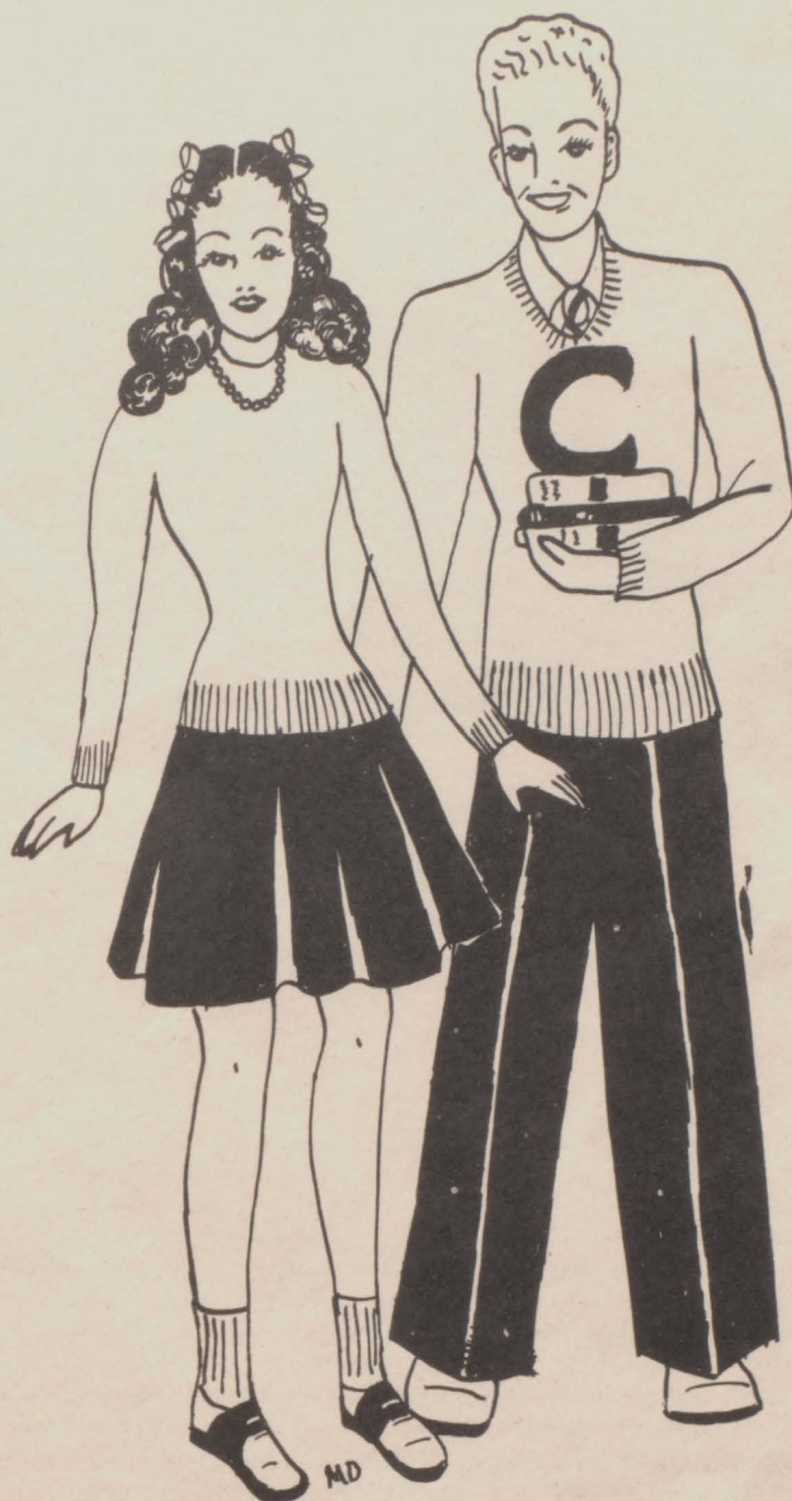
Class Prophecy

CLASS OF '45 REUNION

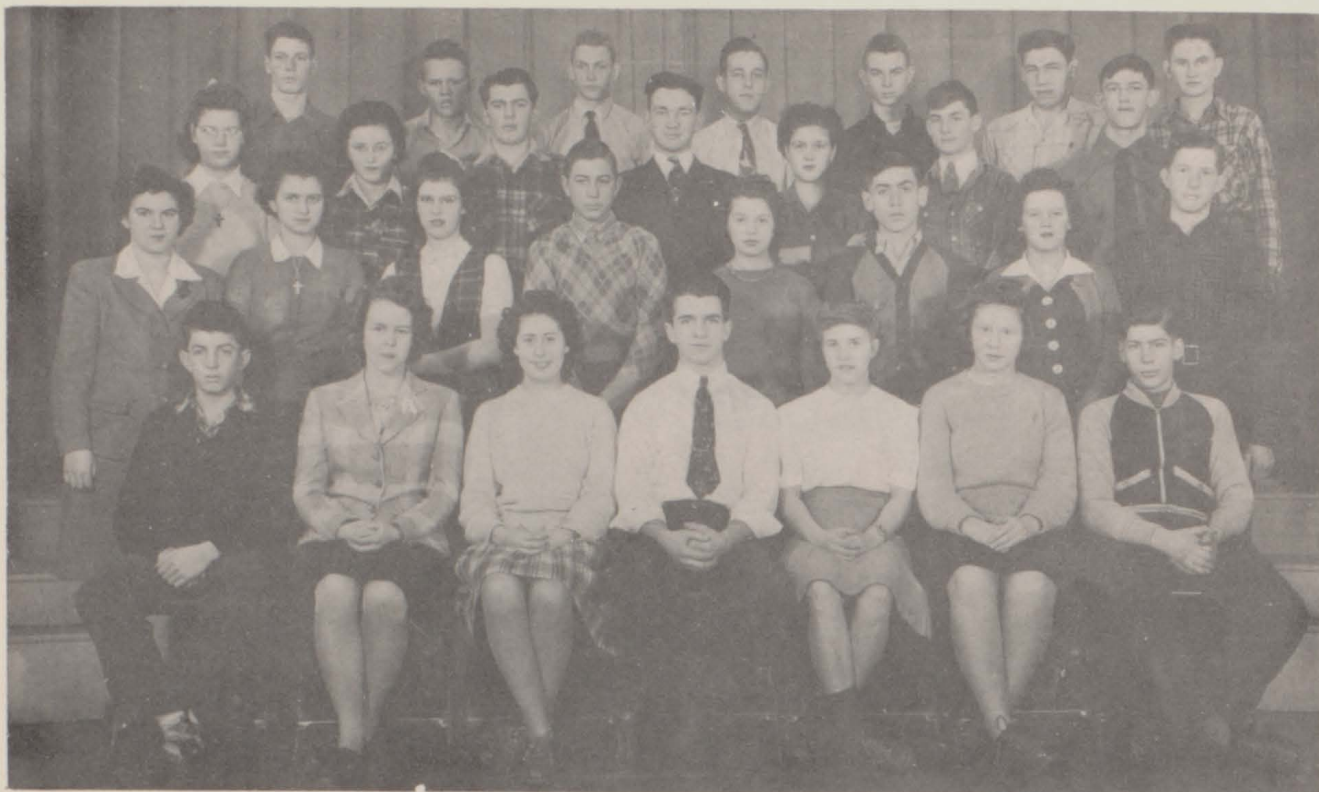
The 1945 graduation class of Colby High School held a reunion at the Stevens Hotel, Thursday, May 30th. All forty-eight of the class were present with their families and several of their former teachers were present.

A roll call was answered by the graduates rising and stating their present addresses and occupations. The class history was read by Miss Marjorie Beawer. The classes former History and Economics teacher, Patricia Carver, played a trombone solo. Principal Harry Bender was the principal speaker. The class sang old school songs and talked over their school days. Those present were:

Nora Anderson, congresswoman from Wisconsin; Irma Barts, Powers model, New York; Madeline Barts, now Mrs. Kenneth Schreiber of Milan; Theresa Brill, math teacher of Green Bay; John Brill, Jr., Secretary of Agriculture under F. D. Roosevelt; Dolores Barr, wife of Captain James Neitzel, El Paso, Texas; Jerry Beyerl, Sgt. 64 Infantry Division, Camp White, Oregon; Marjorie Beawer, manager of Chicago branch office, Hall Publishing Co.; Albert Bauer, Fuller Brush salesman of Colby; Betty Jean Bender, teacher of English and Drama, Superior; Mary Becker, superintendent of nurses at Milwaukee Veterans Hospital; Marian Dallman, now Mrs. Orville Fricke of Colby; Kenneth Engeldinger, professional bum anywhere in the world; Bill Heucke, progressive farmer, Colby; Eldor and Mrs. Hansen and children, Tom, Tim, Tillie, and Tallula of Curdlequick Cheese Factory, Giegerville; Roland Hake and third wife, Gloria De Haven, Hake Funeral Home, Los Angeles; Margaret Rucks, now Mrs. James Firnstahl, traveling on sports tour of the U.S.A.; Marcella Rex, owner of Rex Hat Shoppe, Marshfield; Donald Frane, sports commentator on CBS; Maynard Forss, now an Admiral in the Navy, Hawaiian Islands; Janet Frome, owner of My Ladies Beauty Shoppe, Unity; Virginia Feind, poetess, author of the famous poem "Snowed In"; Irene Rankel, popular radio comedian, New York; Joan Marsh, writer, author of the famous book "A Bush Grows In Colby"; Grace Scheel, famous brain specialist of Madison; Frank Goeltz, United States Navy, San Diego; Herman Sossaman, fur trapper of Alaska; Darlene Schoelzel, private secretary of Denver; Arabella Hamman, woman news commentator of NBC; Marion Gosse, fashion illustrator for McCall's magazine, New York; Alice Schneider, commercial woman pilot of Chicago; Vilas Roewe, field man for International Harvester; Donald Borchert, blue beard of Colby; Lillian Wurthman, H. E. teacher of Shawano; Donald Will, operator of the Rocket Special between Venus and Earth; Dorine Mandel, writer of the love-lorn column of the New York Times; Lorraine Miller, singer with Harry Jims orchestra; Winifred Martins, manager of Whitehouse Condensary, Abbotsford; Jeanette Orth, managing editor of Woman's Home Companion; De Vere Primeau, clarinetist in Ray Tesmer's orchestra; Ellen Voigtlander, lipstick specialist for Max Factor Cosmetics Co.; Virginia Strathman, a Wave in the U.S.N.; LaVilla Nietzel, voice expert for Stromberg-Carlson Radio Corp.; Aurella Hoernke, Wac in the U.S.A.; Elda Boldt, Mrs. Donald Kantor, Unity, Wisconsin; and last, but not least, Roy Thorson, Speaker of the House, (whata house).



Underclassmen



Juniors

Front Row: D. Frane, M. Fricke, E. Andrew, E. Prien, D. Elstrom, I. Hoernke, T. Fristad.
 Second Row: Miss Carver, D. Schoelzel, J. Becken, C. Preim, E. Gutenberger, C. Riese,
 B. Thorson, A. Sterzinger.
 Third Row: M. Schultz, I. Brehm, W. Gierl, R. Ebert, M. Hake, O. Rex, N. Wolf.
 Fourth Row: W. Schneider, W. Birkett, W. Smudde, R. Hemmy, H. Barr, R. Beyerl,
 G. Schmidt.

Class History

Forty-two freshmen entered Colby High School in 1942 with an air of expectancy and bewilderment. They selected from their midst Robert Hemmy, president; Doris Elstrom, vice-president; Marie Hake, secretary; and Dorothy Schuette, treasurer to carry on the business of the class.

Robert Hemmy and Shirley Brehm were the delegates of the class in the popularity contest but in spite of a hard fight they didn't succeed in gaining the throne.

Thirty-four enthusiastic sophomores returned in 1943 to further their education.

In the election of officers, Robert Ebert was elected president; Howard Barr, vice-president; David Frane, secretary-treasurer; and Eugene Prien, class reporter.

Eugene Prien and Mae Fricke, the sophomore candidates, reigned as King and Queen at the annual carnival. This was due to the cooperation on the part of the whole class.

1944 brought only 30 of the original class to the doors of Colby High School, but they hadn't lost any of their "pep and vitality."

Eugene Prien, president; Evelyn Andrew, vice-president; Mae Fricke, secretary; and Doris Elstrom, treasurer, cared for business matters under the supervision of Miss Carver. Evelyn Andrew and Howard Barr were the candidates for the carnival.

They voted to have a formal prom again this year after several years of informal proms.

Doris Elstrom



Sophomores

Front Row: L. Frome, R. Nelson, J. Sixel, R. Tesmer, S. Brehm, L. Thorson, V. Syring.

Second Row: L. Kunze, M. Keller, J. Schorer, E. Feckhelm, E. Buettner, L. Elstrom, J. Schoelzel.

Third Row: V. Koleske, D. Young, V. Herrman, J. Arquette, L. Baumgartner, W. Apfelbeck, L. Geiger.

Fourth Row: A. Syring, P. Firnstahl, B. Stoltzman, A. Foster, P. Steinwand, A. Gries, A. Calbaum, E. Schulz.

Class History

Late in August in the year nineteen hundred and forty-three, forty bewildered freshmen entered Colby High School's doors to spend the greater part of the next four years. Class officers were chosen soon after school had begun and were: Lucille Baumgartner, president; Eugene Wehrman, vice-president; Verna Herrmann, secretary; and Bernard Neitzel, treasurer. Following the example set by the freshmen of 1942, a Citizenship Club was again organized and War Stamps and Bonds were sold. Miss Carver was their class advisor during this year.

As carnival candidates, Lennice Frome and Bernard Neitzel were chosen. The freshman weren't victorious, but they put up a good fight.

In 1944, thirty-five students returned as Sophomores. Mrs. Wernzenski was their class advisor and officers were Raymond Tesmer, president; Harriet Klumb, vice-president; Ronald Nelson, secretary; and Jeanette Sixel, treasurer.

This year it was the Sophomores turn to do the "initiating" and they did a nice job on the poor "Frosh." Amos Foster and Arlene Syring represented the class as candidates for the carnival.

Lucille Baumgartner



Freshmen

Front Row: E. Neuhaus, M. Bornowski, V. Fristad, H. Kumbier, D. Van Dreel, R. Gierl, J. Sazama, D. Schulz, I. Beawer.

Second Row: D. Birkett, M. Treankler, M. Cendt, H. Gosse, M. Brill, A. Mielke, E. Forbish, T. Thorson, H. Carruthers, M. Schmidt, M. Casey, D. Will, B. Brill, P. Scheel, M. Prien, L. Giese.

Third Row: W. Sterzinger, R. Stoltzman, G. Smudde, A. Ballerstein, E. Kellner, A. Gries, L. Rankel, D. Becken, W. Arends, R. Regal, V. Kasper, J. Reel, J. Elstrom, P. Sossaman.

Fourth Row: Mrs. Tweit, M. Case, E. Schilling, D. Barr, M. Schuh, M. Beyerl, A. Sachse, R. Frome, J. Hauser, E. Edblom, M. Neuman, P. Weix, F. Beyerl.

Class History

As the doors of Colby High School opened on August 28, 1944, 57 enrolled freshmen timidly began their work. Although some of their actions, the first few days, were amusing to upper classmen, they soon gave the impression that they weren't so green. During the second week of school they elected the following officers to take care of their business: president, Donna Van Dreel; vice-president, Robert Gierl; secretary, Donald Schulz, and treasurer, Howard Kumbier. Mrs. Tweit was appointed their class advisor.

After a few weeks of school, the sophomores initiated the frosh with a party. Of course many of them were a little fearful, but they all survived.

One of the main events of the year was the carnival. The freshmen's candidates for King and Queen were Donna Van Dreel and Donald Schulz. After a close contest with the senior class they finally came out second.

Following the program of last year's freshmen class, they organized a citizenship club for the purpose of selling stamps and bonds. They have done a very good job.

The freshmen have been very active in all activities, which include band, singing, and sports.

Donald Schulz

Activities



Softball Team

Front Row: D. Barr, W. Gierl, K. Engeldinger, D. Frane, N. Wolf, A. Foster.

Second Row: H. Barr, E. Prien, R. Beyrl, C. Riese, G. Schmidt, R. Frome, A. Bauer.

Third Row: F. Goeltz, W. Smudde, W. Birkett, D. Will, W. Schneider, P. Firnstahl,
D. Borchert, Mr. Bushman.

Calendar Of Events

August

28 School started

September

4 Labor Day
 7 Faculty Picnic
 14 Gas rationing
 20 Soft ball game at Abbotsford
 22 Freshmen and Sophomore party
 28-29 Principals convention
 29 Soft ball game at Dorchester

October

5 Soft ball game at Abbotsford
 6 Wausau Teachers Convention
 12 Soft ball game at Dorchester
 25 Assembly given by Cal Crosshaul
 26 Music Parents Dance

November

1-3 State Teachers Convention. No school
 10 Carnival
 14 District One Act Play contest
 16 Senior pictures taken
 23-24 Thanksgiving vacation

December

19 Christmas program
 25 to

January

3 Christmas vacation
 9 Group pictures taken
 12 End of Semester

February

1 Declamatory Elimination contest
 16 Conference play off at Medford
 21)
 22) Basketball tournament at Abbotsford
 23)

March

9 League Forensic contest
 16 District Forensic contest

April

9 Junior Prom

May 4 School Music Festival

11 Senior Class Play
 17 Commencement



Senior Band

First Row: D. Primeau, M. Dallman, A. Schneider, B. Ebert, V. Koleske, B. Bender, D. Barr.
 Second Row: L. Wurthman, E. Schulz, A. Hamann, W. Bauer, E. Mossing, E. Hanson, A. Gries,
 R. Hemmy, A. Bauer.
 Third Row: S. Brehm, M. Schmidt, A. Syring, E. Prien, J. Arquette, D. Young, I. Brehm, M.
 Prien, M. Hake, R. Regal, M. Keller, R. Hake.
 Fourth Row: J. Schorer, J. Brill, J. Marsh, B. Stoltzman, L. Frome, M. Barts, M. Becker.
 Standing: R. Nelson, R. Tesmer, R. Thorson, P. Firnstahl, Miss Carver.



Chorus

Front Row: M. Beawer, J. Schorer, D. Schulz, M. Becker, L. Frome, E. Prien, J. Marsh,
M. Brill, S. Brehm, D. Mandel, M. Fricke, M. Keller, L. Thorson.
Second Row: E. Schulz, E. Gutenberger, M. Brill, V. Kasper, T. Fristad, E. Schilling, A.
Gries, M. Rex, B. Thorson, I. Brehm, D. Frane, L. Miller.
Third Row: O. Rex, M. Hake, J. Arquette, V. Koleske, A. Sterzinger, W. Apfelbeck, V.
Strathman, B. Bender, I. Rankel, M. Forss, B. Ebert, D. Borchert.
Fourth Row: M. Rucks, J. Sixel, Mr. Bender, J. Brill, A. Bauer, W. Schneider, P. Firnstahl,
D. Primeau, D. Will, E. Hanson, J. Beyerl, R. Tesmer.



Pep Band

Sitting: B. Bender, L. Wurthman, E. Prien, D. Primeau, E. Hanson, R. Hake, A. Gries, A. Hamann.
 Standing: J. Brill, R. Tesmer, P. Firnstahl, M. Becker, J. Marsh, M. Barts, Miss Carver.



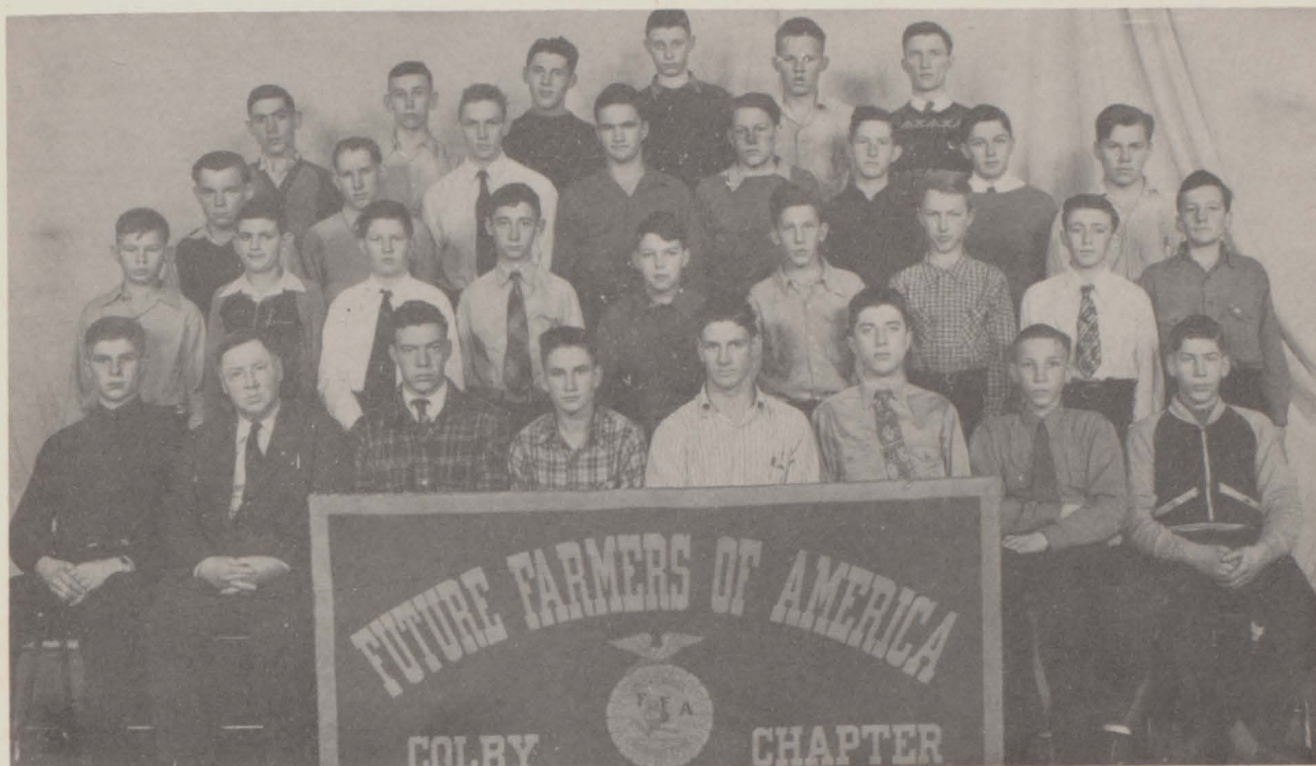
Junior Band

Standing: E. Boldt, L. Jastrow, P. Youman, Miss Carver, B. Bender.
 Third Row: J. Arquette, B. Ramker, J. Gierl, M. Beyerl, A. Gries, J. Sazama, M. Neuman.
 Second Row: M. Schmidt, A. Syring, G. Olson, H. Gosse, D. Young, R. Regal, D. Schultz, V. Kasper.
 First Row: A. Calbaum, M. Casey, D. Will, L. Rankel, A. Nosbich, F. Youman.



Girls' Glee Club

Front Row: I. Beawer, E. Schulz, B. Brill, M. Schmidt, M. Gosse, M. Barts, L. Wurthman, M. Keller, E. Neuhaus, L. Baumgartner, M. Rex.
 Second Row: D. Becken, P. Sossaman, T. Thorson, L. Frome, E. Barts, A. Sachse, J. Schorer, E. Boldt, D. Will, M. Casey.
 Third Row: R. Stoltzman, M. Schuh, E. Kellner, A. Gries, Miss Carver, S. Brehm, R. Regal, J. Frome, H. Carruthers.
 Fourth Row: M. Beyerl, J. Sixel, L. Rankel, M. Rucks, B. Bender, V. Strathman, A. Syring, L. Miller.



F. F. A.

Front Row: R. Hake, Mr. Jackson, J. Brill, G. Schmidt, D. Will, E. Hanson, V. Koleske, T. Fristad.

Second Row: D. Birkett, J. Schoelzel, M. Prien, V. Kasper, W. Cendt, L. Kunze, G. Smudde, M. Brill, W. Sterzinger.

Third Row: J. Reel, M. Case, W. Smudde, P. Steinwand, J. Hauser, A. Sterzinger, E. Schilling, R. Frome.

Fourth Row: C. Riese, V. Roewe, A. Foster, W. Apfelbeck, W. Birkett, P. Firnstahl.



Madrigal

Sitting: E. Schulz, L. Frome, J. Sixel, M. Rucks, J. Marsh, L. Wurthman, E. Barts, M. Barts, L. Miller, D. Mandel, M. Keller.

Standing: M. Brill, V. Kasper, D. Schulz, E. Schilling, Mr. Bender, B. Bender, V. Strathman, P. Firnstahl, J. Brill, D. Primeau, D. Borchert.



F.H.A.

Front Row: V. Syring, E. Feckhelm, S. Brehm, L. Wurthman, J. Orth, A. Syring, M. Keller, L. Frome.

Second Row: E. Boldt, E. Buettner, L. Baumgartner, V. Herrman, E. Voightlander, D. Barr, L. Geiger, E. Schulz.

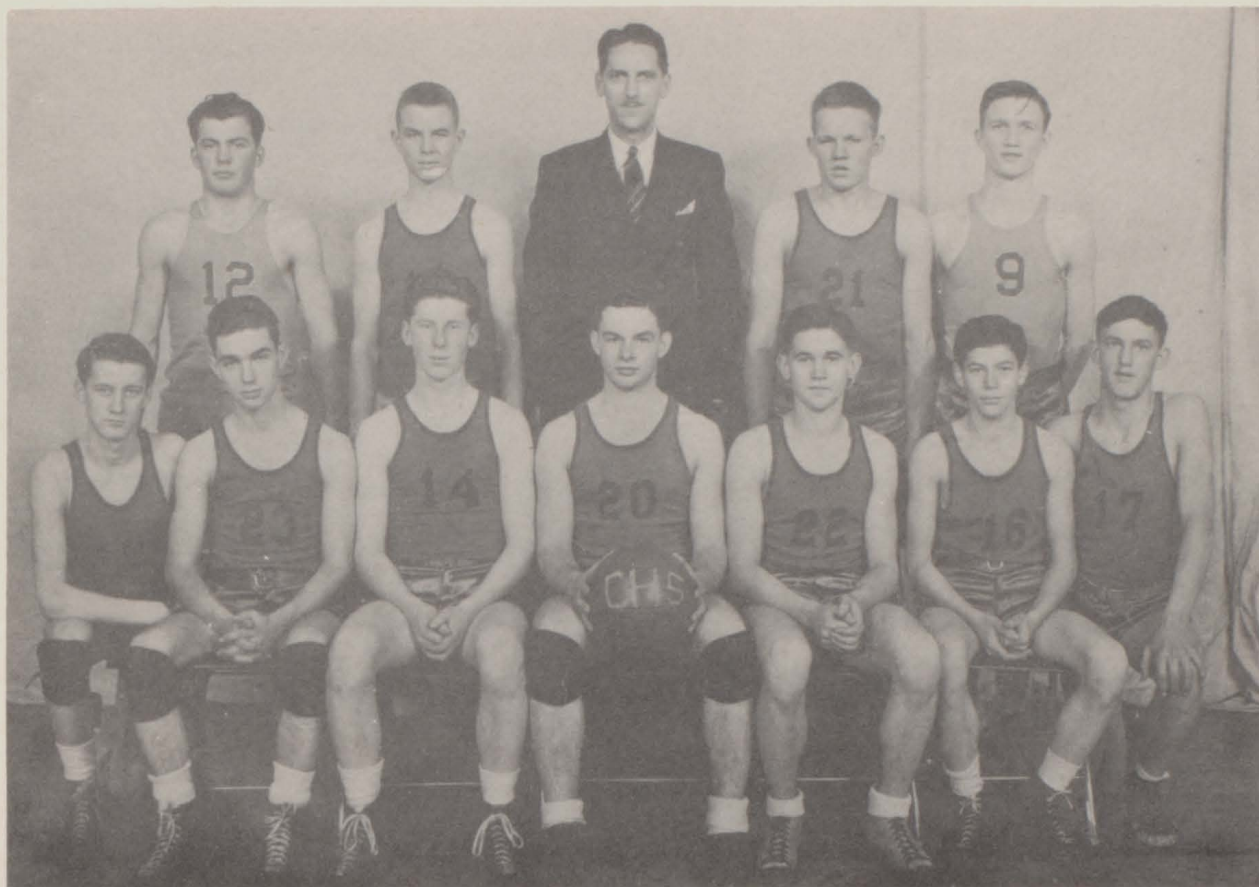
Third Row: D. Young, J. Sixel, W. Martins, B. Stoltzman, M. Rucks, V. Strathman, A. Calbaum.



Inter-Nos

Sitting: G. Scheel, L. Baumgartner, M. Rucks, B. Bender, M. Becker, D. Elstrom, L. Wurthman, M. Beawer, N. Anderson.

Standing: Mrs. Durkin, I. Beawer, R. Beyerl, S. Brehm, E. Gutenberger, R. Hemmy, E. Andrew, T. Brill.



"A" Squad

Seated: R. Thorson, D. Borchert, K. Engeldinger, F. Goeltz, A. Bauer, D. Frane, N. Wolf.
 Standing: W. Gierl, H. Barr, Mr. Bushman, W. Birkett, P. Firnstahl.

SPORTS REVIEW

The team's record is not so brilliant but they played good, hard games against tough opponents.

	Colby	Opponents	Date
Colby at Abbotsford	27	25	Nov. 14
Medford at Colby	22	24	Nov. 22
Colby at Greenwood	13	20	Nov. 28
Granton at Colby	31	12	Dec. 7
Colby at Medford	12	29	Dec. 12
Colby at Unity	22	10	Dec. 15
Spencer at Colby	18	19	Dec. 21
Abbotsford at Colby	23	28	Jan. 5
Colby at Loyal	19	27	Jan. 17
Greenwood at Colby	23	27	Jan. 19
Colby at Granton	29	11	Jan. 25
Unity at Colby	23	18	Feb. 1
Colby at Spencer	26	22	Feb. 9
Loyal at Colby	32	16	Feb. 13



Cheer Leaders

A. Gries, V. Strathman, A. Foster, P. Firnstahl, J. Marsh, T. Thorson.



"B" Squad

D. Birkett, R. Gierl, C. Riese, D. Barr, A. Gries, J. Hauser, P. Firnstahl, Mr. Bushman.



One-Act Play Cast

R. Tesmer, R. Thorson, Mrs. Durkin, M. Becker, B. Bender, D. Borchert.



Girls' Basketball

Sitting: D. Young, B. Bender, M. Rucks, V. Strathman, A. Gries.
 Kneeling: M. Young, M. Rex, E. Edblom, T. Thorson, P. Sossaman, M. Schultz.
 Standing: M. Beverl, B. Thorson, E. Boldt, Miss Carver.

"Baby Daze"



Anna, sweet and innocent



Two cuties (Janet S. and her bunny)



Marian at 8 months.



Lorraine—then



Our Carnival Queen



Don't cry, Gracie!



Little Wurthmann



Two Wolves (Johnny and Rover)



Janet, Our Redhead

Growing Up



"Dimples" Anderson



Marie's Pets



"Swampie"



"Cheesie"



"Posing"



Our Editor



Prom King '45



"Howie" K. Teacher's Delight



"Chummy"



Betty K.



"Primeau"



Frankie "Pee Wee" "Sonnie" →



?



Herr Bender



On Parade



Miss Carver
(and Nora)



ain't love grand!



We three



Cute eh?



Sweet hearts!



Lucky dog!



Holy matrimony
Mr. and Mrs. Bender

BOOSTER LIST

North West Distributing Co.	\$15.00
Equity Co-op Shipping Association	10.00
H. H. Motor Co.	10.00
Security State Bank	5.00
Kriplean Bros.	5.00
S. L. Loos	5.00
Harmony Co-op Produce Co.	5.00
A. F. Zillmer Co.	3.00
Mueller's Restaurant	3.00
O & N Lumber Co.	3.00
Krepsky and Neck Service Station	3.00
Colby Beauty Shop	2.50
Hotel Robinson	2.00
Midget City Meat Market	2.00
Fleischauers Men's Store	2.00
Jackson and Vorland	2.00
Firnstahl Food Market	2.00
Steiber Hardware	2.00
Colby State Bank	2.00
F. W. Luloff	2.00
Colby Medical Association	2.00
Teds Service Station	2.00
Colby Drug Store	2.00
Reeves Barber Shop	1.50
Hause Barber Shop	1.50
Clover Farm Store	1.00
H. J. Welsh	1.00
Big "W" Super Service	1.00
Sablers Grocery	1.00
Wiersig and Dins	1.00
Colby Phonograph	1.00
O. W. Sturner	1.00

*That's all
folks!*



