



The Eau Pleine
Volume 6 - 1943



Edited by the class of '43
Colby High School
Colby, Wisconsin

Foreword

To the students and friends of Colby High we present this
1943 Eau Pleine.

The Annual Staff

THE STAFF

Editor-in-Chief Gloria Thorson

Senior Assistant Glenn Scheel

Junior Assistant Betty Frane

Typists: Lois Stock
 Virginia Firnstahl
 Donald Wiersig

Artists: Rose Ven Rooy
 Mary Engeldinger

Business Manager Brice Bender

Assistant Subscription Arland Elstrom

Junior Assistant. Ray Miller

Snapshots Mr. Eugene Lehrman
 Leona Rannow
 May Yelke



COLBY HIGH SCHOOL

BOARD OF EDUCATION



Dr. H.H. Christofferson
President



E.W. Schultz
Treasurer



O.H. Heintz
Clerk



Faculty



Mr. Lehrman
Agriculture
Now serving in the army.



Miss Panzenhagen
Math 9, Commercial



Mr. Abrahamson
Social Science, Band
Now serving in the army.



Mrs. Abrahamson
Home Ec.



Mr. Day
Social Science,
Spanish

DEDICATION Mr. Bender



To our Principal, Harry Bender, who has been chief counsellor for Colby Hi for the past twenty one years, we, the Class of '43, dedicate this issue of The Eau Pleine as a token of our appreciation for his help and guidance through out the four years of our high school work.



Mr. Tessmer
Band



Mrs. Makhholm
English, Spanish
Resigned



Miss Bjoin
English, Civics,
Chorus



Mr. Bushman
Science, Coach



Mrs. Folstad
English

Class History

In the year of 1939, the class of '43 entered the Colby High School as Freshmen. This class numbered 53, but by the beginning of the second year it had decreased to 40. The officers of this freshman class were as follows: Brice Bender, President; Marcella Schmidt, Vice President; and Joyce Merwin, who held the combined offices of Secretary and Treasurer. Mr. Richard Allen acted as advisor.

During the second year, the class was under direction of Miss Evelyn Quigg. The members of the sophomore class participated in a wide variety of extra-curricular subjects. The class now numbered 39. The officers of the class were Walter Schuh, President; Gerald Kobs, Vice President; Mary Engeldinger, Secretary; and Allene Priem, Treasurer.

The class of '43, during its junior year, was one that hoped for and waited for the time when it would become a senior class. This year the officers and the class had to plan for the Junior Prom. The class decided on an informal prom, using the rose garden as a theme. The Junior advisor was Miss Mildred Daehn. The offices were held by Brice Bender, President; Donald Wiersig, Vice President; Vera Alexander, Secretary; and Virginia Firnstahl, Treasurer.

The last year of high school is, without doubt, the busiest for the class and the officers. The officers elected for this final year were, Eugene Strathman, President; Gloria Thorson, Vice President, Joseph Butler, Treasurer; and Lois Stock, Secretary. This advisor who is helping to usher us through our final year of class activities is Mr. Harry Bender.

Allene Priem

Seniors

Motto - "In Ourselves Our Future Lies"

VERA ALEXANDER
 "All good things come in
 small parcels."
 Glee Club 2
 One Act Play 1
 Declamations 1



Class Flower -
 Yellow Rose

Class Colors -
 Maroon and Silver

JOHN ARENDS
 "Johnnie" -- "There must
 be plenty of hard labor
 inside of him; none has
 ever come out."
 F.F.A. 3-4



BRICE BENDER
 "Brucie" -- "Just give me
 a listener, and I'll do the
 talking."

F.F.A. 1-2-3-4
 F.F.A. Vice Pres. 4
 F.F.A. Speaking 4
 Class Pres. 1-3
 Chorus 1-2-3-4
 Operetta 3-4
 Madrigal 3-4
 Basketball 1-2-3-4
 One-Act Play 4
 Inter-Nos Staff 3-4
 Band 1-2

ROBERT BALLERSTEIN
 "Bob" -- "Don't look at
 me, girls, it makes me
 nervous."



ARTHUR BREHM
 "Artie" -- "Generally speak-
 ing, he's generally speaking."
 Basketball 2-3
 F.F.A. 1-2-3-4
 Baseball 3

JOE BUTLER

"I am satisfied with myself,
so why worry?"

Band

President 1

Orchestra 4



VIRGINIA FIRNSTAHL
"Jinny" -- "Her mind is on
her work; but her heart
is elsewhere."

Band 1-2-3-4

Glee Club 1-2

Chorus 3-4

Chorus Pres. 4

F.H.A. 2-3

F.H.A. Pres. 3

Twirling 2-3-4

Flag Swinging 2-3-4

Madrigal 3

Orchestra 2-3-4

Class Treasurer 3

Operetta 3

Annual Staff 4



WILLIAM DVORAK
"Willie" -- "I couldn't be
good if I would, and I
wouldn't be good if I
could."

F.F.A. 1-2-3

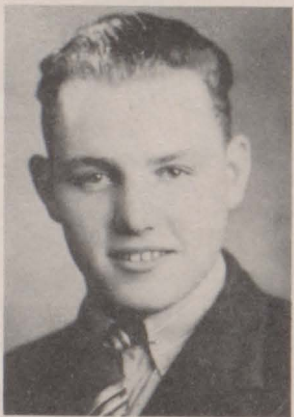
DONALD FORSS
"Scubby" -- "Sometimes I
sit and think; sometimes
I just sit."

F.F.A. 2-3-4

ARLAND ELSTROM
"Arts" -- "He doesn't break
rules; he just bends them
a little."

F.F.A. 1-2-3-4

Treasurer 4



MELVIN FORSS
"Mal" -- "Some think that
school was made for fun
and frolic, and so do I."

Chorus 3-4

Madrigal 4

Operetta 3-4

F.F.A. 2-3-4

F.F.A. Pres. 4

Carnival King 3

MARY ENGELDINGER
"Don't try to convince me;
I have my own ideas."

Secretary 2

Hum. Declam. 1-2

Ser. Declam. 3-4

Ext. Reading 3-4

Annual Staff 4



RITA GUTENBERGER
"I claim not to have con-
trolled events; but confess
plainly that events have
controlled me."

Inter-Nos Staff 2-3-4

Annual Staff 3

Glee Club 1

Chorus 2-3-4

Madrigal 2-3-4

Operetta 2-3-4

Carnival Queen 3

One-Act Play 3

IRENE HERRMANN

"High School days are delights, but they can't compare with high school nights."

Glee Club 1-2
Chorus 3-4
F.H.A. 1-2-3
Madrigal 4

**JOYCE MERWIN**

"Joycie"--"My heart is like the moon--there is a man in it."

Band 1-2-3-4
Glee Club 1-2
Chorus 3-4
Twirling 3-4
Drum Major 3-4
Assistant Director 3-4
Cheerleader 2-3-4
Class Treasurer 1
Flag Swinging 3-4
Chorus Secretary 4
Can for Carn. Queen 2
Orchestra 2-3-4
Operetta 3-4
Annual Staff 4

GERALD KOBS

"Jiggs"--"I'd like school if only they would provide a little more excitement."

Basketball 1-2-3-4
Band 1-2-3-4
Chorus 1-2-3-4
Madrigal 3
Baseball 2-3
Softball 1-4
One-Act Play 2
Vice Pres. 2
Can for Carn. King 2
Operetta 1-2-3
Inter-Nos Staff 2
Pep Band 2

**EMERY ORTH**

"When you have nothing to say; say nothing."

Basketball 1-2-3-4
Baseball 2-3
Softball 3-4

VIRGINIA KRIPLEAN

"Ginnie"--"In typing she was a shark; for proof take a look at her mark."

Glee Club 1
Chorus 2-3
Band 1-2-3

**PHILIP PETERSON**

"Pete"--"He isn't lazy, he was just born tired and never got rested."

F.H.A. 2-3-4

JANE LUKOWICZ

"An innocent face; but you can never tell."

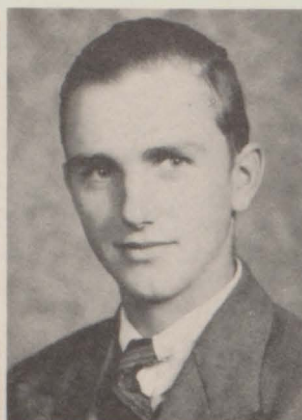
Glee Club 1-2
Chorus 3-4
Madrigal 4
F.H.A. 1-2-3

**ALLENE PRIEM**

"My idea of an agreeable person is a person who agrees with me."

Band 2-3-4
Glee Club 1-2
Chorus 3-4
Pep. Band 3-4
Orchestra 3-4
Treasurer 2
F.H.A. 2-3
Annual Staff 4

MATILDA RANKEL
 "True to her work, her words, her friends."
 Chorus 2-3-4
 Glee Club 1
 F.H.A. 2-3-4



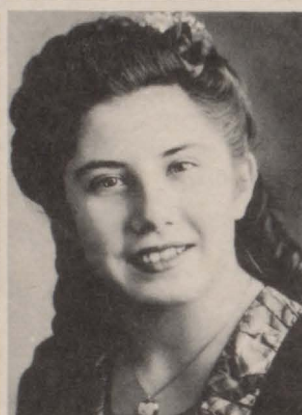
RUDY SCHOELZEL
 "Rudy"--"Let the world go as it may; I'll take it any way."
 F.F.A. 2-3-4
 One-act-play 3

LEONA RANOW
 "Toots"--"Full of fun and mischief too, doing things she shouldn't do."
 Band 1-2-3-4
 Glee Club 1-2
 Chorus 3-4
 F.H.A. 2-3
 Pep Band 4
 Operetta 3-4



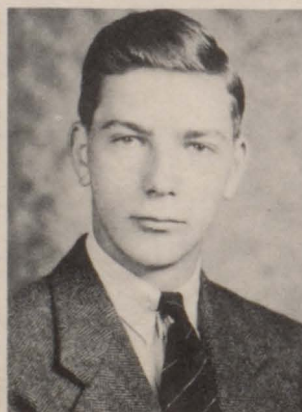
WALTER SCHUH
 "Wally"--"He laughs best who laughs all the time."
 Chorus 3-4
 Madrigal 4
 Operetta 3-4
 Class President 2

GLENN SCHAUS
 "God's gift to the women."
 Basketball 1-2-3-4
 Track 2
 Baseball 1-2
 Softball 1-2-4
 F.F.A. 2-3-4



LOIS STOCK
 "I am the songstress of the class; I sing and let my worries pass."
 Band 1-2-3-4
 Glee Club 1-2
 Chorus 3-4
 Pep Band 2-3-4
 Class Secretary 4
 Madrigal 3
 Orchestra 4
 Inter-Nos Staff 4
 Operetta 3-4

GLENN SCHEEL
 "He always gets things done; and yet he has a lot of fun."
 Debate 2-3
 Ext. Speaking 3-4
 Band 1
 Inter-Nos Staff 4
 Annual Staff 4
 Can for Carn. King 1
 Chorus 4



EUGENE STRATHMANN
 "Toots"--"The combined qualities of a man and an athlete."
 Basketball 2-3-4
 Baseball 2-3
 Softball 3-4
 Class Pres. 4

EVELYN SYRING

"To be efficient in a quiet way; that is my aim throughout the day."



HENRY VOIGTLANDER
"Hank"--"He is a hunter; woman is his game."

F.F.A. 1-2-3-4
F.F.A. treasurer 2
F.F.A. speaking 4
State Farmer 4
Inter-Nos Staff 4
Softball 4
Basketball 4

HARRY SYRING

"He hears no evil, sees no evil, and speaks no evil."

F.F.A. 1-2-3-4



DONALD WIERSIG
"Donnie"--"He's a quiet man; and what a man!"

Band 1
Chorus 1-2-3-4
Madrigal 3-4
Operetta 1-2-3
Baseball 2-3
Softball 1-4
Track 3
Basketball 1-2-3-4
Vice President 3
Inter-Nos Staff 2-3-4
Annual Staff 4

GLORIA THORSON

"Glorious"--"She's witty and clever; and the best friend ever."

Band 1-2-3
Pep Band 1-2-3
German Band 1-2-3
Glee Club 1-2-3
Chorus 4
Madrigal 4
Echoe Staff 1-2-3
Inter-Nos Staff 4
Forensics 1-3z
One-Act Play 3-4
Pep Club 1-2-3
Annual Staff 1-2-3-4
V. Pres. of Class 4

**MARIE WOLF**

"A girl of silence; a girl of sense."

Glee Club 1-2
Chorus 4
F.H.A. reporter 4
F.H.A. 2-3-4
Inter-Nos Staff 4

ROSEMUND VEN ROOY

"Rosie"--"If your work interferes with your sleep, quit work."

Band 1
Glee Club 1
Chorus 2-3-4
Annual Staff 4

**MAY YELKE**

"If silence were golden, I'd be a millionaire."

Band 1-2-3-4
Pep Band 3-4

Class Prophecy

It is the year 1955. Having become tired of the routine of business, I decide to take a vacation. I apply for reservations of a round-the-world rocket ship that is going on a tour of far-away countries. At the airport I discover several of my old schoolmates. What a pleasant surprise to find out that Joe Butler is the dispatcher at the field! In our ensuing conversation, I am further surprised when he tells me that Eugene Strathman is going to be our pilot on the trip and that our hostess will be Lois Stock.

Since the cruise does not begin for several hours, I decide to go down-town for a while. The taxi I call is driven by none other than Emery Orth. On the way down-town I ask him about some more of our old school comrades. He tells me this: Henry Voigtlander is one of the most progressive farmers in Wisconsin and has discovered a new fertilizer that makes plants grow before your very eyes. Brice Bender is in the House of Representatives, where he is known as the "Farmer-politician." He is known chiefly for his long filibusters favoring the farmers. Gloria Thorson is soloist with the world-famous Kobs Orchestra, which is conducted by our old friend, Gerald Kobs. Irene Hermann is the wife of one of the best farmers in Wisconsin, and has taken up flying an autogiro as a hobby. Mary Engeldinger is an ardent communist, and is touring the world to gain followers to her cause.

Beginning to feel hungry by this time, I ask Emery to stop in at a good restaurant with me. There, behind the counter of a modern, well-equipped cafe we discover Marie Wolf and Jane Lukowicz. They too know the whereabouts of several more students from the class of '43. William Dvorak is the engineer of a transcontinental streamliner. May Yelke is clarinetist with New York Symphony Orchestra. And Walter Schuh is fast becoming the leading radio star of the nation with his fast-moving comedy show "Corn--Unadulterated."

My watch tells me that time is up, so I return to the field. I am just in time for the take-off. Since this is a limited-time cruise, we are stopping only in the larger cities and places of special interest. In New York, our first stop, I find several more members of Colby High, Class of '43. Glenn Schaus is entertaining on Broadway with his demonstrations of old-time jitterbugging. His partner is Leona Rannow, who has also danced on the continent of Europe. Rose Ven Rooy is a designer and artist for a fashionable Fifth-Avenue shop. Virginia Kriplean is the private secretary of a busy, fast-moving industrialist.

The next lap of our trip carries us to London. We have a very smooth ride and Eugene negotiates the distance in record time, a little less than an hour and 30 minutes. In London I am met by Art Brehm, who is with our Diplomatic Corps. Vera Alexander is his secretary and assistant and does a very good job of keeping everything in order.

From London we proceed to Paris, where I find Donald Wiersig, who has been loaned to France by the United States as a technical expert

on a large construction project. Then on to Berlin, where Joyce Merwin greets us very warmly. She is the wife of an Admiral in our Navy, and is also a reformer and trouble-shooter in the former Axis Countries.

Our next stop is Moscow. In Moscow we discover that two of our colleagues are attempting to influence Russian opinion in favor of democratic ways on an advanced scale. They are Allene Priem and Robert Ballerstein. In Vladivostock we discover that Arland Elstrom is trying to teach the Siberians our old American game of baseball. No wonder his batting average is so high! Then we cross to Japan. In Tokyo we are greeted by Harry Syring, who is the Provincial director of Activities from the United States. His work has been very efficient and effective. After a short excursion through Japan, we begin winging our way out over the Pacific. At Hawaii we pause for a resting-up period. During our stay there we visit the U. S. garrisons. Philip Peterson is in command of a part of our forces there and shows us through the installations of our defenses. Also, John Arends is a Sergeant in our Army forces and is known to be the toughest Sergeant in Hawaii.

Then, after the refreshing interval is over, we head for the good old U. S. A. California, here we come! When we land at the airport in Los Angeles, we are met by Customs-inspector Melvin Forss. He searches thoroughly for any smuggled foods. Since we are laying over for a while at Los Angeles, we take a side trip to San Francisco. There, after viewing the Golden Gate and Oakland Bridge, I meet Rudy Schoelzel. He is on an advertising mission for the Wisconsin State Cheese Commission. Sales in California have increased sharply since Rudy arrived. In our conversation he tells me that Evelyn Syring is also in California and is writing a good book that should be a best-seller. Matilda Rankel is collaborating with her by doing a great deal of the necessary research work.

Later, after taking off from Los Angeles, we fly low over a very large truck farm in Central California. I am able to read a sign which says, "Bay View Truck Gardens--operated by Donald Forss." Our pilot tells me that these gardens consist of several thousand acres and send foods all over the United States. A short time later we land in Chicago. There I discover that Rita Gutenberger is now private secretary to the president of the largest meat-packing plant in the world. There, also, is Virginia Firnstahl, running a large store of the P. & A. chain.

I have had indeed a wonderful vacation and now know the whereabouts of every one of the Seniors of the class of '43. TIME MARCHES ON!

Glenn Scheel

Class Will

We the Seniors of Colby High School do will and bequeath our knowledge to the Sophomore Class.

We leave our humor to the Freshmen.

We leave our vacated desks and our good manners to the Juniors, who will need them both.

Lois Stock leaves her long black hair to Arlene Schuette.

Glenn Scheel leaves his "corny" jokes to "Pinky" Engeldinger.

Joyce Merwin leaves her cheer-leading ability to Joan Marsh.

Hank Voigtlander leaves his romantic ways to Orville Rex.

Donald Wiersig leaves his brains to Maynard Forss.

Melvin Forss leaves his "steady" to whoever can get her.

Virginia Firnstahl leaves--with regrets.

Donald Forss leaves his ability to spell to whoever wants it.

Irene Herrmann leaves her "book-learnin'" to Sylvester Block.

Rita Gutenberger leaves her way with the teachers to Harry Schuette.

Jane Lukowicz leaves her anxiety at basketball games to Jeanette Orth.

May Yelke leaves her shyness to Marie Hake.

Leona Rannow leaves her dancing ability to Lucille Fink.

Mary Engeldinger leaves her stubbornness to Donald Borchert.

Marie Wolf leaves her essay-writing ability to Jerome Schultz.

Brice Bender leaves his "gift of gab" to next year's F.F.A. speaker.

Arland Elstrom leaves his "devilish moments" to Robert Robertson.

Allene Priem leaves her loud voice to be divided equally among those girls that are constantly "seen but not heard."

Glenn Schaus leaves his "way with women" to Emil Fleischauer.

Joe Butler leaves his ability to get through High School in three years to Ambrose Sterzinger.

Philip Peterson leaves his shiftless ways to Eldor Hanson.

William Dvorak leaves his attentiveness in class to Dolores Barr.

Eugene Strathman leaves his good looks to Roy Gutenberger.

Rose Ven Rooy leaves her artist's tools and drawing ability to the illustrator of next year's annual.

Emery Orth leaves his leisure time to Robert Hemmy.

Evelyn Syring leaves her quiet ways to Marie Sasama.

Arther Brehm leaves his neat appearance to Wilbur Gierl.

Robert Ballerstein leaves his cowboy hat to Shirley Brehm.

Matilda Rankel leaves her silly laugh so that someone else can trade it in on a new one.

Gloria Thorson leaves her dignified ways to Marjorie Young.

Virginia Kriplean leaves her typing prowess to John Brill.

Vera Alexander leaves her short stature to Margaret Rucks.

Gerald Kobs leaves his pug-nose to Miss Bjoin.

John Arends leaves his red face to Eileen Keller.

Rudy Schoelzel leaves his long eye-lashes to "Bill" Bauer.

Harry Syring leaves--in haste.

Walter Schuh leaves his ability to laugh at anything and everything to, Marjorie Beawer.



Underclassmen



Juniors

1st row, Left to right: B. Frane, H. Schuette, E. Keller, R. Gutenberger, L. Steiber, M. Olson, R. Miller, M. Schneider, M. Gries, J. Stecker, F. Goeltz, F. Riley, R. Robertson.
 2nd row: L. Fink, R. Hein, L. Case, B. Apfelbeck, L. Wolk, I. Ebert, B. Witte, L. Passehl, M. Sazama, G. Apfelbeck, L. Hoernke, B. Syring, S. Sabler.
 3rd row: N. Kasper, R. Wucherpfehig, J. Firnstahl, J. Dhein, N. Will, H. Ullrich, S. Block, L. Hoernke, M. Grieser, J. Schultz, E. Pflum, B. Birkett.

CLASS HISTORY

As the fifty-four bewildered freshmen enrolled in Colby Hi in 1940, they acquired the traditional title of "Green Freshmen." As time passed, they really went to work to gain an education and to convince the upper-classmen that they weren't so "green" after all. From their midst, they chose Joseph Butler for president, Jerome Schultz for vice-president, Marcella Olson for secretary-treasurer, and James Dhein and Marcella Olson for Carnival King and Queen candidates.

When it came time for their sophomore year, they sailed back determined to gain all they possibly could from their studies. The business matters were taken care of by Dallas Seboe, president; Laverne Hoernke, vice-president; Marguerite Schneider, secretary; and La Vera Steiber, treasurer. Their Carnival King and Queen candidates were Ray Miller and Marguerite Schneider.

As juniors, their class officers are Robert Robertson, president; Marcella Olson, vice president; Rita Hein, treasurer, and Pat O'Connor, secretary. The Carnival King and Queen candidates of their class, James Firnstahl and Beulah Witte, reigned at the Carnival. They have voted thumbs down on the conventional formal Junior Prom in favor of an informal affair.



Sophomores

1st row, left to right: D. Busche, J. Neitzel, G. Scheel, N. Anderson, A. Apfelbeck, A. Bauer, E. Barts, M. Rex, E. Lang, V. Wellman, L. Wurthman, M. Beawer, A. Schuette, M. Gosse, M. Barts, D. Frane.

2nd row: L. Schulz, A. Schneider, A. Hamann, E. Boldt, V. Seboe, D. Mandel, L. Neitzel, E. Voigtlander, L. Miller, F. Brill, B. Krueger, H. Sossaman, V. Roewe, G. Beyerl, M. Becker.

3rd row: I. Rankel, D. Borchert, E. Syring, J. Marsh, D. Barr, M. Dallman, J. Frome, I. Weix, D. Schoelzel, K. Engeldinger, R. Hake, E. Hanson, T. Brill, L. Nosbisch, F. Goeltz, D. Primeau.

4th row: H. Klumpyan, V. Feind, A. Hoernke, J. Orth, W. Martins, B. Kunze, W. Heucke, M. Rucks, B. Bender, V. Strathman, E. Fleischauer, D. Will, J. Brill, M. Forss, J. Bitter.

CLASS HISTORY

Two years ago--August 25, 1941, 65 pupils began their work as Freshman of Colby Hi. After the first few days their nerves stopped jumping and they set about to show what they, the largest class in Hi School, could accomplish.

Their first step was to elect the following officers--Pres., Kenneth Engeldinger, V. Pres., Roland Hake, Sec., Donald Borchert. Mr. Allen was their advisor the first part of the year. Upon his resignation, Miss Panzenhagen took over his duties. This class readily took part in the extra curricular program.

This year, as sophomores, they are still the largest class, having a membership of 65. Business matters were taken care of by Emil Fleischauer, Pres.--Mary Becker, V. Pres.--Margaret Rucks, Sec.--Betty Jean Bender, Treasurer. Kenneth Engeldinger and Nora Anderson represented the class as Carnival King & Queen candidates. The class again had the misfortune to lose their advisor, Mrs. Makholt, who resigned at the end of the first semester, but her work was ably carried out by Mrs. Folstad.



Freshmen

1st row, left to right: T. Fristad, M. Young, D. Elstrom, B. Thorson, A. Sterzinger, E. Prein, G. Schmidt, C. Priem, L. Kath, E. Gutenberger, O. Rex, I. Hoernke.
 2nd row: V. Carruthers, D. Uhlig, S. Brehm, D. Schoelzel, J. Becken, I. Brehm, M. Hake, E. Andrews, V. Krueger, D. Frane, N. Wolf, C. Riese.
 3rd row: W. Schneider, W. Birkett, L. Apfelbeck, R. Beyerl, W. Smudde, W. Gierl, D. Estrumse, D. Schuette, H. Barr, R. Hemmy, M. Schültz, M. Fricke, R. Ebert.

CLASS HISTORY

The freshman class of 1942-43 started with 42 members.

A few weeks after school started, this class had it's first meeting and elected the following officers: president--Robert Hemmy, vice president--Doris Elstrom, secretary--Marie Hake, treasurer--Dorothy Schuette.

One of the highlights of the year for the freshman class, as well as all the other classes, was the annual carnival. The members of this class really worked hard trying to make their candidates, Shirley Brehm and Robert Hemmy, the reigning couple of the evening. They succeeded in coming out third, which was quite a conquest, considering the size of the class.

A winter isn't complete without a skating party, and the freshman, realizing this, had one; but as luck would have it, it was one of the coldest nights we've had. Cold couldn't stop the freshman as they all had fun anyway.

The supposedly green freshman of this class aren't green on the subject of citizenship, and our duties as citizens; for on one green on this subject would want to organize a citizenship club as this class has. This club was organized to promote all civic projects which may arise during the year. So far the club has distributed copies of all the school songs and yells, and also sold a large quantity of war stamps. This should prove the point that freshman aren't green.



Activities

Calendar of Events for 1942-'43

August

- 24 - School begins

September

- 7 - Labor Day (Nobody worked)
- 21 - Softball game with Abbotsford. We won 13-4.
- 28 - Softball game with Abbotsford. We won again 18-8.

October

- 2 - Seniors sponsored school dance.
- 7 - Report cards (sad day)
- 9 - Wausau Teacher's Convention.
- 12 - Music Parents Card Party.
- 13 - First Forensic meeting of the year.
- 16 - Sophomore party for Sophomores only.
- 23 - 28 Intensive practice for the carnival.
- 29 - Band Clinic at Stevens Point.
- 30 - Carnival - James Firnstahl and Beulah Witte Reigned as king and queen.

November

- 5 - 7 State Teachers Convention at Milwaukee.
- 7 - Joyce Merwin, Joan Marsh, Frances Riley, and Lois Stock entertained over WIGM, Medford.
- 11 - Armistice Day Program.
- 12 - FFA Banquet
- 13 - One Act Play Contest at Loyal; Our play took first place.
- 17 - Joyce Merwin drew a demerit.
- 18 - Report Cards - Headaches and stuff.
- 18 - Basketball game with Athens. We won 19-13.
- 25 - Basketball game with Spencer. We won second. Score 34-21.
- 26 - 29 Thanksgiving Vacation.

December

- 3 - Basketball game with Dorchester. We won 32-17.
- 11 - Basketball game with Unity. We won 19-12.
- 17 - Basketball game with Abbotsford. We won again 31-19.
- 18 - Chorus went caroling and held a Christmas party.
- 22 - Christmas Program.
- 22 - Graduation pictures of the Seniors arrived.
- 23 - School Dance
- 23 - Christmas Vacation begins--Mrs. Makholm resigned.

Calendar of Events (Continued)

January

- 4 - School is resumed--Mr. Day arrived to take Mrs. Makholm's place.
- 6 - End of First Semester.
- 7 - Mr. Day moved Senior History Class Students to assigned positions.
- 8 - Basketball game with Dorchester. We won 17-17.
- 13 - Mr. Doyle came to take pictures for the Annual.
- 15 - Basketball game with Spencer. We lost 29-18.
- 21 - 22 Snow Vacation.
- 28 - Basketball game with Unity. We won 31-13.
- 29 - School Dance.

February

- 2 - Basketball game with Medford. We lost 24-11.
- 3 - Brice Bender and Glenn Schaus stayed with Hank over night. (In his car trunk.)
- 5 - Another School Dance. More Fun!
- 9 - Basketball game with Medford. We lost 24-11.
- 12 - Basketball game with Abbotsford. We lost 21-19.
- 19 - Junior "learn-to-dance" party.
- 22 - 25 Rationing Program is carried out in the High School.
- 26 - Basketball Tournament at Abbotsford.

March

- 5 - School dance and farewell party for Mr. Lehrman.
- 8 - Faculty defeated Seniors in basketball game 9-8.
- 7 - Seniors won Class Tournament.
- 9 - 15 Extensive work on the Annual.
- 13 - Sally Olson captured Brice Bender's Class Ring.
- 17 - Local Forensic Contest.
- 23 - F.F.A. contests at Medford.
- 24 - Forensic contests at Dorchester. Colby won first in Oratory and in Extemporaneous Speaking.
- 29 - Entertainment by Stevens Point Band and Chorus in Colby High School Gymnasium.

April

- 8 - Forensic contest at Stevens Point.
- 30 - Junior Prom. "The Gingham Ball"

May

- 14 - Senior Class Play "Here Comes Charlie."
- ? - Music Festival.
- 21 - Graduation and Commencement.



Annual Staff

Front Row: V. Kriplean, M. Engeldinger, G. Scheel, G. Thorson, R. Ven Rooy, B. Bender, L. Stock.

2nd Row: R. Miller, A. Elstrom, Mr. Bender, D. Wiersig, V. Virnstahl, J. Merwin, B. Frane.



Inter Nos Staff

Front Row: F. Riley, R. Gutenberger, G. Thorson, G. Scheel, M. Becker, M. Wolf, L. Stock.

2nd Row: O. Rex, R. Robertson, K. Engeldinger, E. Fleischauer, Miss Bjoin, B. Bender, D. Wiersig, V. Wellman.



Basketball

Front Row: D. Wiersig, G. Kobs, J. Firnstahl, E. Orth, B. Bender.

2nd Row: W. Birkett, G. Schaus, F. Goeltz, Mr. Bushman coach, E. Strathman, H. Voigtlander.

SPORTS REVIEW

Take a good look at the team before you read this. As you see, they aren't very big. Colby High very seldom turns out a big team, but we have always been known to have a good, all-around team.

Colby and the neighboring schools did not have a regular conference this year because of gas rationing. The team has played a total of thirteen games; two of which were played at the W.I.A.A. tournament at Abbotsford. We are losing seven members of this squad by graduation this year.

<u>Opponent</u>	<u>We</u>	<u>They</u>
Athens	29	13
Spencer	21	35
Dorchester	32	17
Unity	19	12
Abbotsford	31	19
Dorchester	27	17
Spencer	18	29
Unity	31	13
Medford	12	24
Medford	12	19
Abbotsford	17	21
Marathon	27	34
Abbotsford	20	27



Senior Band

First Row: D. Priemo, A. Schuette, L. Hoernke, A. Schneider, M. Gries, B. Bender, D. Barr, M. Yelke, M. Dallman, L. Schulz, L. Stock, L. Stieber.

Second Row: A. Priem, L. Wurthman, E. Ebert, L. Rannow, A. Bauer, K. Engeldinger, E. Keller, B. Frane, R. Hake, A. Hanson, A. Hemmy, A. Hafeman, E. Fleischauer, R. Miller.

Third Row: J. Firnstahl, D. Borchert, G. Kobs, V. Firnstahl, J. Merwin, J. Butler, J. Brill, M. Becker, M. Barts, L. Hoernke, R. Hein, J. Marsh, E. Priem.



Junior Band

Front Row: J. Hauser, R. Ebert, D. Loos, D. Sossaman, J. Allman, W. Waldhart, D. Baumgart, C. Priem.

2nd Row: A. Schuette, L. Nietzel, A. Hoernke, D. Frane, R. Bane, M. Hake, R. Hake, E. Hanson, D. Young, D. Estrume, I. Brehm.

3rd Row: R. Nelson, D. Elstrom, S. Brehm, R. Regal, F. Klaar, P. Firnstahl, Mr. W. Tesmer--Director.



Pep Band

First Row: L. Stock, L. Stieber, D. Borchert, M. Yelke, L. Rannow.

Second Row: B. Frane, J. Brill, E. Fleischauer, J. Merwin.

Third Row: M. Becker, J. Marsh, A. Priem.



Chorus

- 1st Row: F. Goeltz, M. Becker, L. Case, E. Keller, J. Merwin, R. Gutenberger, I. Ebert, L. Stock, Mr. Schneider, B. Frane, M. Olson.
- 2nd Row: O. Rex, G. Apfelbeck, J. Lukowicz, L. Schulz, L. Steiber, J. Marsh, L. Passehl, V. Firnstahl, F. Riley, M. Wolf, J. Stecker, S. Sabler.
- 3rd Row: L. Rannow, R. Hein, M. Gries, B. Bender, M. Rankel, A. Priem, B. Witte, I. Herrmann, G. Thorson, R. Ven Rooy, V. Wellman, C. Priem, D. Frane.
- 4th Row: R. Gutenberger, A. Bauer, G. Scheel, D. Wiersig, W. Schuh, S. Block, G. Kobs, B. Bender, J. Brill, M. Forss, G. Beyerl, R. Ebert, W. Schneider.



Girls' Glee Club

First Row: M. Young, D. Mandel, M. Beawer, B. Thorson, M. Olson, M. Hake, V. Seboe, S. Brehm, M. Gosse, E. Gutenberger, E. Lang.

Second Row: N. Anderson, L. Miller, F. Brill, L. Kath, E. Boldt, I. Brehm, V. Carruthers, M. Rex, I. Weix, A. Schuette.

Third Row: G. Scheel, M. Schultz, J. Frome, F. Brill, Miss Bjoin, M. Rucks, D. Schuette, I. Rankel, M. Fricke.



Madrigal

First Row: V. Strathman, F. Riley, J. Stecker, I. Herrmann, O. Rex, V. Seboe, M. Rucks, J. Lukowicz, R. Gutenberger.

Second Row: Mr. Bender, R. Gutenberger, W. Schuh, M. Forss, B. Bender, D. Wiersig, V. Wellman, G. Thorson, M. Olson.



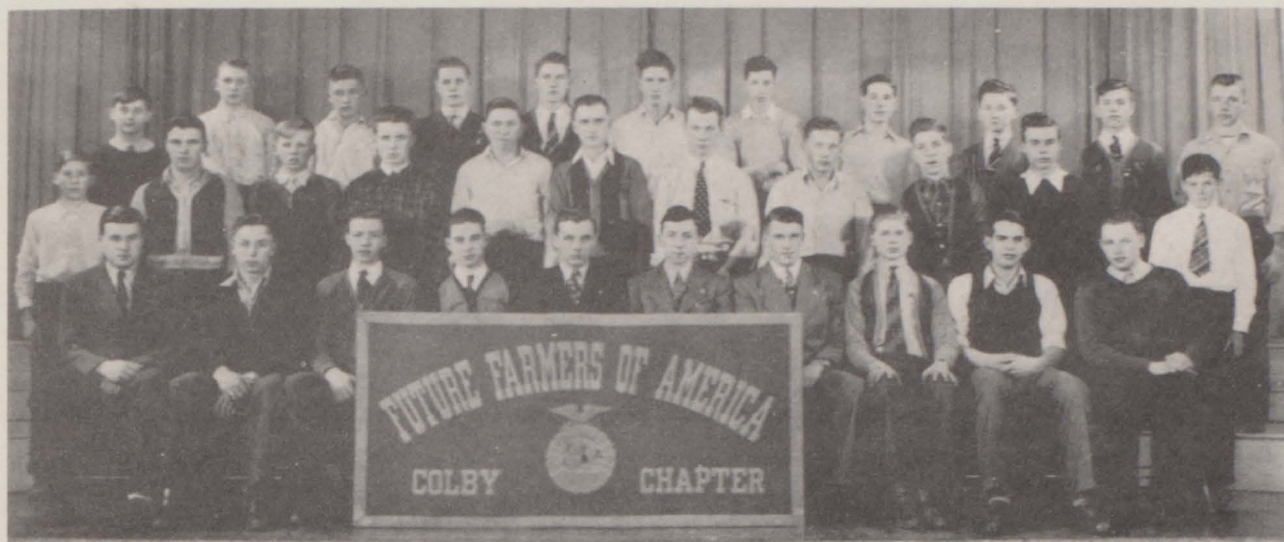
Orchestra

1st Row: V. Firnstahl, Mr. Abrahamson, A. Priem, J. Marsh.
 2nd Row: M. Becker, B. Frane, J. Merwin.
 3rd Row: D. Borchert, J. Butler.



Play Cast

1st Row: K. Engeldinger, M. Becker, J. Marsh, D. Frane.
 2nd Row: Mr. Bender, E. Fleischauer, B. Bender, G. Thorson, B. Bender.



F. F. A.

- 1st Row: E. Lehrman, G. Schaus, J. Brill, D. Borchert, M. Forss, B. Bender, H. Voigtlander, R. Hake, A. Brehm, A. Elstrom.
 2nd Row: T. Fristad, E. Syring, W. Birkett, H. Klumpyan, P. Peterson, R. Schoelzel, J. Arends, D. Forss, J. Schultz, H. Syring, D. Frane.
 3rd Row: O. Rex, W. Smudde, M. Forss, S. Block, J. Firnstahl, N. Will, B. Kunze, J. Beyerl, R. Ebert, R. Gutenberger, V. Wellman.



F. H. A.

- 1st Row: M. Becker, L. Schulz, M. Wolf, M. Rucks, B. Witte, Mrs. Abrahamson, M. Olson, V. Strathman, M. Rankel, I. Keller.
 2nd Row: B. Krueger, M. Gries, F. Goeltz, S. Sabler, G. Scheel, N. Anderson, A. Schuette, J. Lukowicz, L. Wurthman, M. Gosse.
 3rd Row: B. Frane, D. Barr, E. Voigtlander, W. Martin, J. Orth, R. Hein, J. Frome, I. Barts, V. Seboe, E. Boldt.

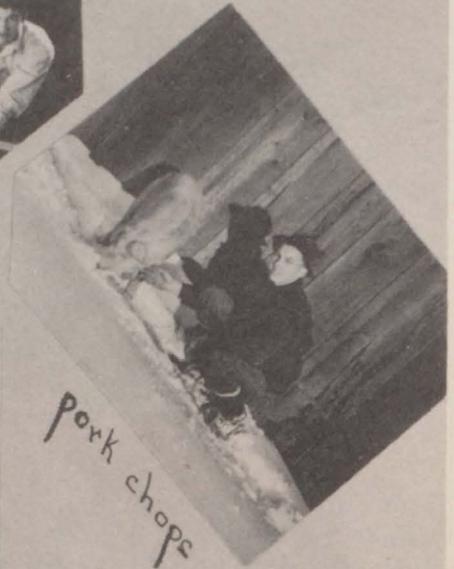
PROJECTS



shop work



hey Bud, move over!



pork chops



a future wool coat, eh what?



Hank's little lamb.



the Franc Dairy



"Brucie," Inc.



Future Farmers



nice sheep

Age of Innocence



Gini and Jane



Marie Wolf



Carl + Allene



Freckle-faced
Engeldinger

Wanna ride?
It's Bruce



Don, Jiggs, Lee



"ootsie Coo" (Glenn School)



Brotherly Love



"Young Stock"



Harry



"Toots" & her brothers



Dolores



"Slim"



Love in Bloom
Dorine + Roland



Allene



"Joycie"

Snapshots



Wrong answer?



The Coronation



Water?



Meeting the bus.



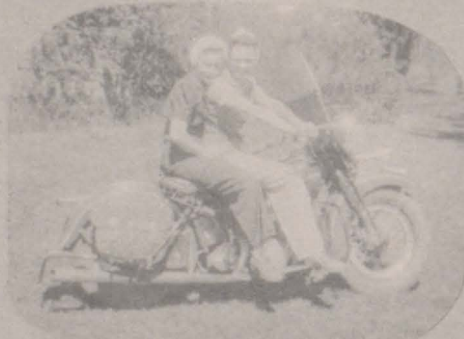
Hep! Hep! Hep!



Now, Artie!



Cute Dog?



Speed.



Tillie + Rover.



Wedding Bells



Gas House Gang



From Bruce?



Future Home Makers



Main Room any morning



Count



your

calories,



Girls!



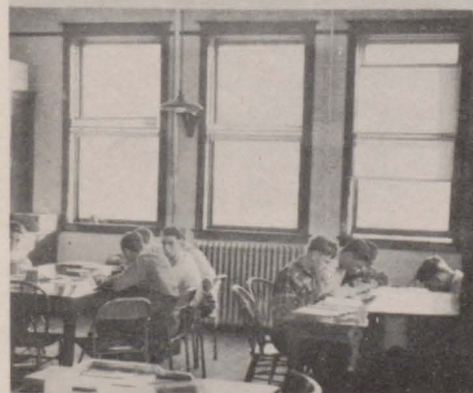
Mess Call



Dimples



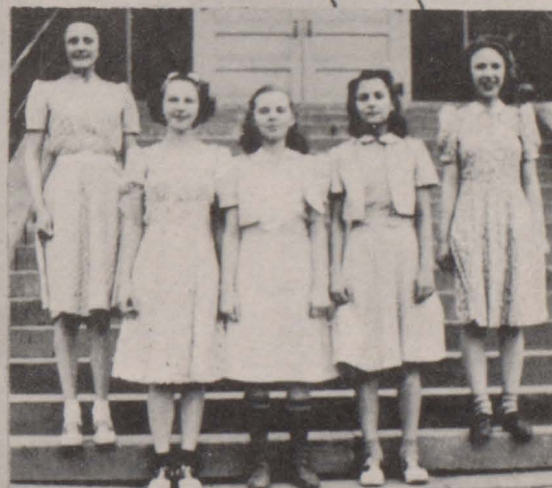
Studying??



Soph. Aq. Class



Jinny and Rose



Fresh

Our Janitor



BILL BAUER

AND HIS HELPERS



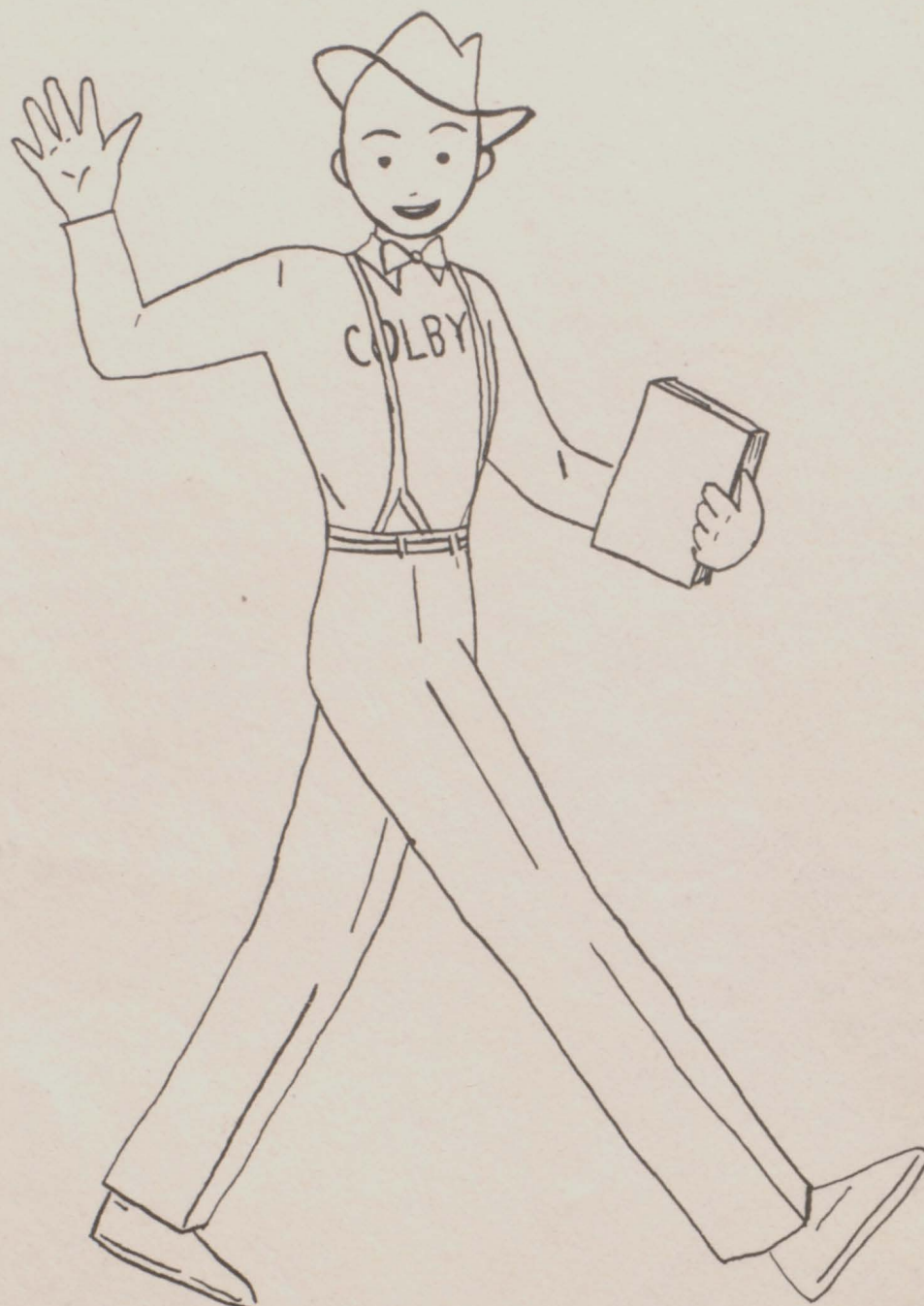
BILL JR.



ALBERT

Booster List

H. H. Motor Co.	\$10.00
Reeves Barber Shop	1.50
Hotel Robinson	1.00
Midget City Meat Market	2.00
A. F. Zillmer Co.	2.00
Fleischauer's Men's Store	2.00
Clover Farm Store	1.00
S. L. Loos	2.50
H. J. Welch	1.00
Harmony Co-op Produce Co.	5.00
Big "W" Super Service	1.00
Firnstahl Food Market	1.50
Sablers Grocery	1.00
Mueller's Restaurant	1.50
Stroota-Stieber Hardware	1.00
F. W. Lulloff	1.00
Wiersig and Dins	1.00
Colby Phonograph	1.00
Colby Drug Store	2.50
City Bakery	1.00
Kriplean Bros. Garage	5.00
Gamble Store	1.00
A. J. Caron Tavern	1.00
Security State Bank	2.00
O. R. Briggs	1.00
H. P. Mossing	1.00
Dr. G. A. Weix	1.00
Frank Hunt, Standard Oil Co.	1.00
O & N Lumber Co.	5.00
Colby State Bank	1.00
Ted's Service Station	1.00
New Colby Theatre	1.00
Krep sky and Neck Service Station	1.00
O. W. Sturner	1.00
Colby Beauty Shop	1.50
Jackson and Vorland	2.00
Colby Medical Association	2.00



That's All, Folks!

